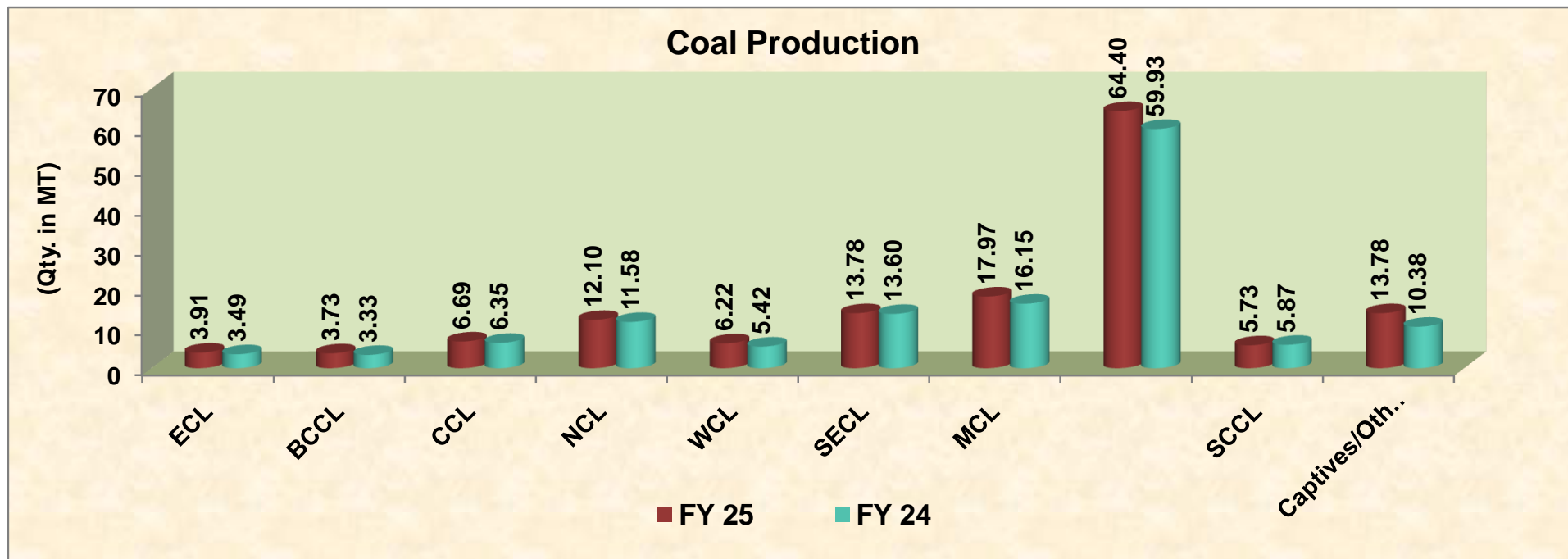


Monthly Coal Statistics for May'2024 (Provisional)

Coal Production

India's coal production increased by 10.15% to 83.91 MT from 76.18 MT during May'24 as compared to May'23. During May'24, CIL and Captives/Others registered a positive growth of 7.46% & 32.76% by producing 64.40 MT & 13.78 MT of coal respectively. Whereas SCCL registered a negative growth of 2.40% by producing 5.73 MT.

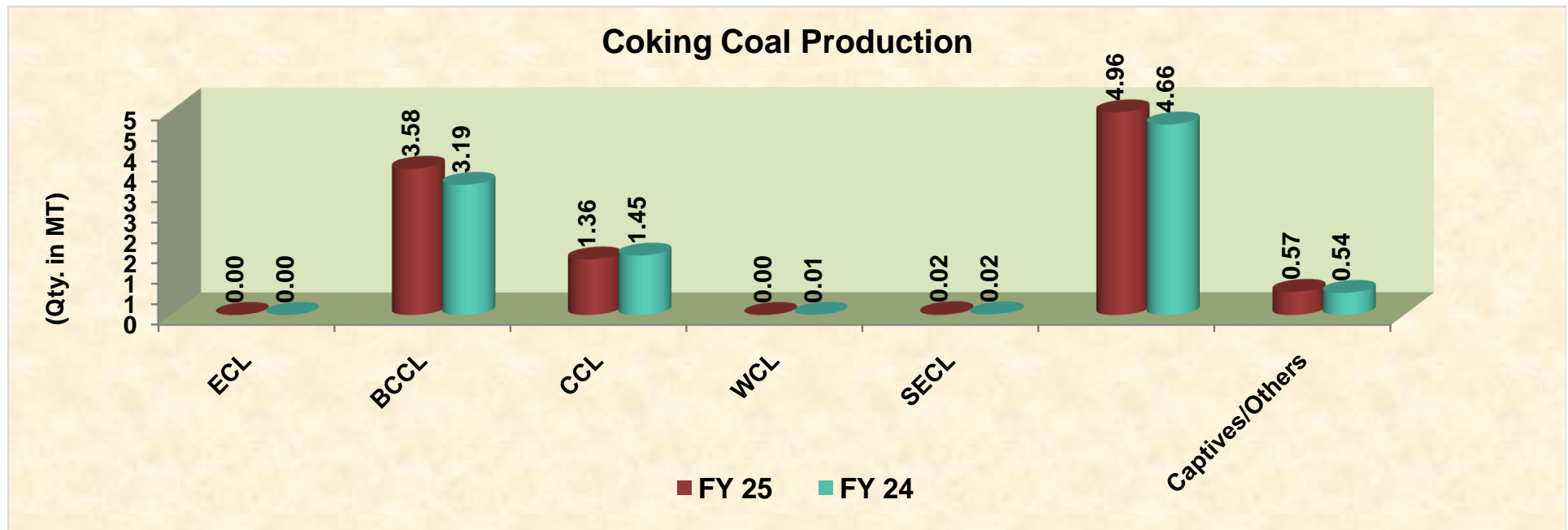


Coal Production

Fig. in MT

SI No	Subs	Monthly Target	Production during May				Production upto May		
			FY 25	Achmt.(%)	FY 24	Growth (%)	FY 25	FY 24	Growth (%)
1	ECL	4.03	3.91	96.90	3.49	▲ 11.83	7.85	6.67	▲ 17.73
2	BCCL	3.53	3.73	105.61	3.33	▲ 11.85	7.06	6.53	▲ 8.23
3	CCL	7.61	6.69	87.88	6.35	▲ 5.41	12.78	11.78	▲ 8.45
4	NCL	12.06	12.10	100.32	11.58	▲ 4.44	23.90	23.12	▲ 3.40
5	WCL	5.72	6.22	108.72	5.42	▲ 14.72	12.66	10.94	▲ 15.73
6	SECL	15.50	13.78	88.91	13.60	▲ 1.32	27.92	27.72	▲ 0.71
7	MCL	17.14	17.97	104.81	16.15	▲ 11.27	33.98	30.73	▲ 10.55

8	NEC	0.01	0.02	190.00	0.01	▲ 90.00	0.04	0.03	▲ 60.00
	CIL	65.60	64.40	98.18	59.93	▲ 7.46	126.18	117.50	▲ 7.38
9	SCCL	6.20	5.73	92.40	5.87	▼ 2.40	11.21	11.45	▼ 2.14
10	Captives/Others	13.87	13.78	99.35	10.38	▲ 32.76	25.24	20.50	▲ 23.13
	Grand Total	85.67	83.91	97.95	76.18	▲ 10.15	162.62	149.45	▲ 8.81



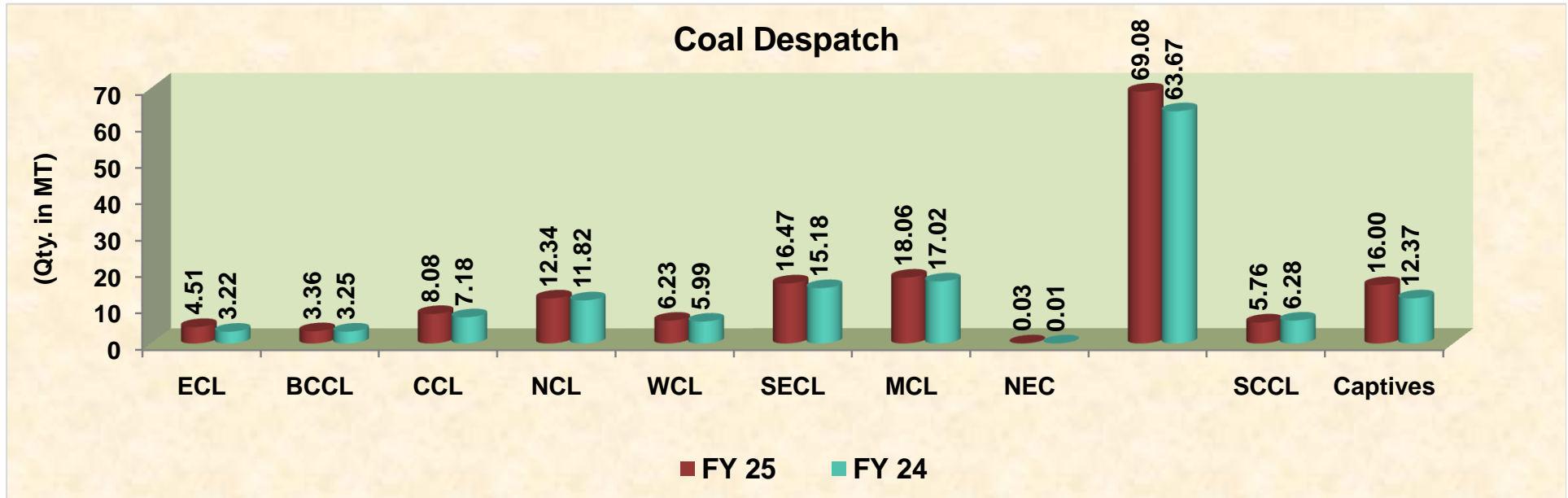
Coking Coal Production

Fig. in MT

SI No	Subs	Monthly Target	Production during May				Production upto May		
			FY 25	Achmt.(%)	FY 24	Growth (%)	FY 25	FY 24	Growth (%)
1	ECL	0.00	0.00	0.0	0.00		0.00	0.00	
2	BCCL	3.38	3.58	105.9	3.19	▲ 12.40	6.79	6.23	▲ 8.94
3	CCL	1.97	1.36	69.1	1.45	▼ 6.40	2.86	2.77	▲ 3.40
5	WCL	0.00	0.00		0.01	▼ 100.00	0.00	0.01	▼ 100.00
6	SECL	0.02	0.02	105.3	0.02	▲ 17.65	0.04	0.04	▲ 14.29
CIL		5.37	4.96	92.4	4.66	▲ 6.41	9.69	9.05	▲ 7.11
7	Captives/Others		0.57		0.54	▲ 4.81	1.19	1.04	▲ 14.08
Grand Total		5.37	5.53	102.9	5.20	▲ 6.25	10.88	10.09	▲ 7.83

Coal Despatch

India's coal despatch increased by 10.35% to 90.84 MT from 82.32 MT during May'24 as compared to May'23. During May'24, CIL and Captives/Others have registered a positive growth of 8.50% & 29.33% by despatching 69.08 MT & 16 MT of coal respectively. Whereas SCCL registered a negative growth of 8.28% by despatching 5.76 MT.



Coal Despatch

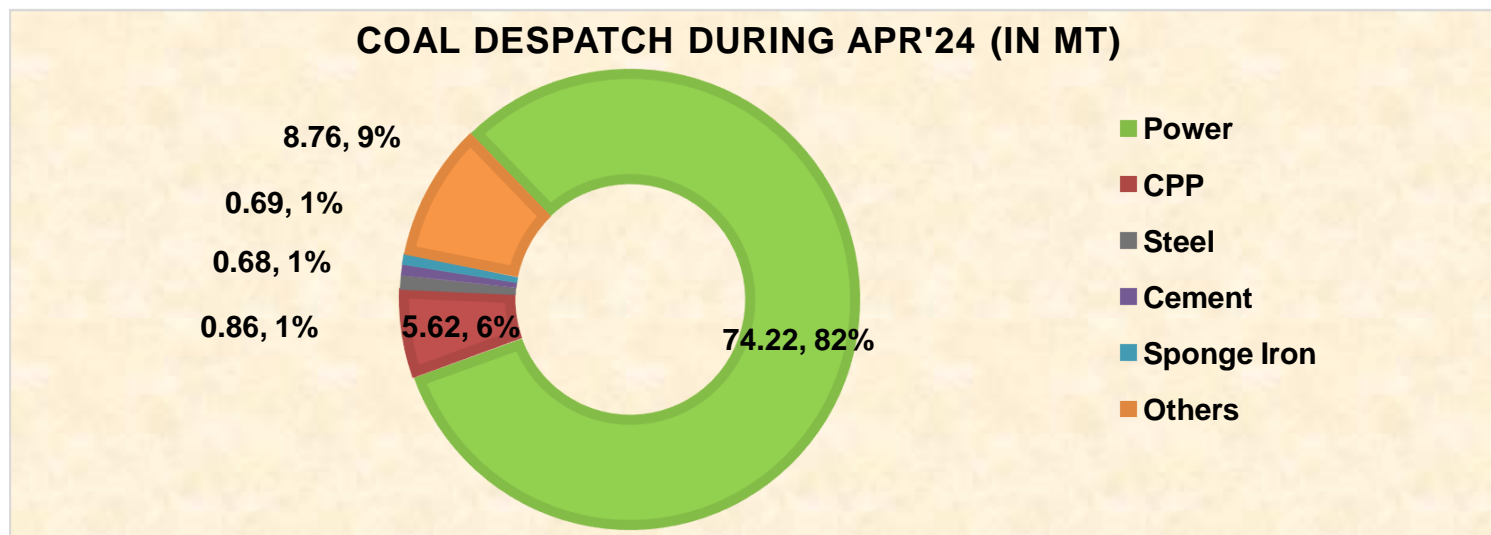
Fig. in MT

SI No	Subs	Monthly Target	Despatch during May				Despatch upto May		
			FY 25	Achmt.(%)	FY 24	Growth (%)	FY 25	FY 24	Growth (%)
1	ECL	4.96	4.51	90.93	3.22	▲ 40.06	8.62	6.40	▲ 34.69
2	BCCL	3.88	3.36	86.60	3.25	▲ 3.38	6.55	6.40	▲ 2.34
3	CCL	8.68	8.08	93.09	7.18	▲ 12.53	14.88	14.85	▲ 0.20
4	NCL	12.10	12.34	101.98	11.82	▲ 4.40	23.74	23.47	▲ 1.15
5	WCL	6.50	6.23	95.85	5.99	▲ 4.01	12.11	12.20	▼ 0.74
6	SECL	18.30	16.47	90.00	15.18	▲ 8.50	32.05	29.68	▲ 7.99
7	MCL	19.20	18.06	94.06	17.02	▲ 6.11	35.30	32.94	▲ 7.16
8	NEC	0.02	0.03	150.00	0.01	▲ 200.00	0.05	0.02	▲ 150.00
CIL		73.64	69.08	93.81	63.67	▲ 8.50	133.30	125.96	▲ 5.83
9	SCCL	6.20	5.76	92.90	6.28	▼ 8.28	11.49	12.28	▼ 6.43

10	Captives	13.87	16.00	115.33	12.37	▲ 29.33	31.17	24.32	▲ 28.17
Grand Total		93.71	90.84	96.93	82.32	▲ 10.35	175.96	162.56	▲ 8.24

Coal Despatch to Different Sectors

The Power utilities despatch has increased by 7.15% to 74.22 MT during May'24 as compared to 69.27 MT during May'23.

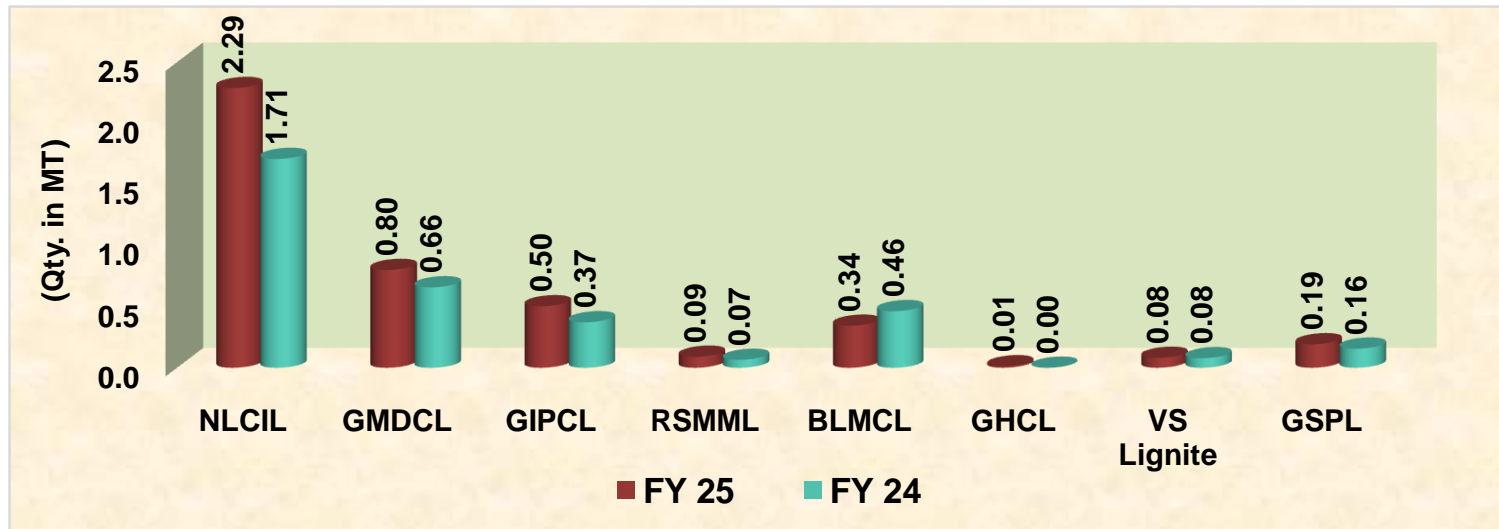


Coal Despatch to Different Sectors

Fig. in MT

Sectors	Despatch during May			Despatch upto May		
	FY 25	FY 24	Growth (%)	FY 25	FY 24	Growth (%)
Power	74.22	69.27	▲ 7.15	144.65	135.50	▲ 6.75
CPP	5.62	4.83	▲ 16.30	10.22	9.63	▲ 6.07
Steel	0.86	0.78	▲ 10.94	1.79	1.52	▲ 17.84
Cement	0.68	0.81	▼ 16.13	1.35	1.62	▼ 16.27
Sponge Iron	0.69	0.97	▼ 28.72	1.19	1.71	▼ 30.33
Others	8.76	5.66	▲ 54.72	16.76	12.58	▲ 33.22
Total	90.84	82.32	▲ 10.35	175.96	162.56	▲ 8.24
Dispatch to Power	74.22	69.27	▲ 7.15	144.65	135.50	▲ 6.75
Dispatch to NRS	16.61	13.05	▲ 27.31	31.31	27.05	▲ 15.73

Lignite Production

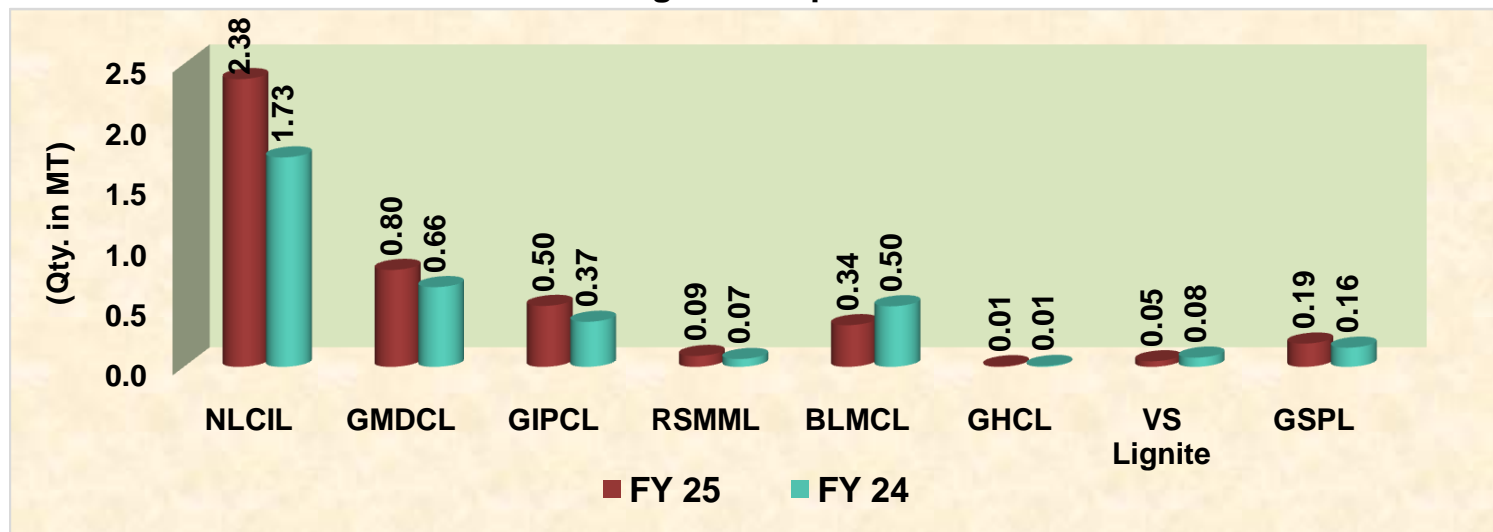


Lignite Production

Fig. in MT

SI No	Company	Production during May			Production upto May		
		FY 25	FY 24	Growth (%)	FY 25	FY 24	Growth (%)
1	NLCIL	2.29	1.71	▲ 33.94	4.26	3.36	▲ 26.83
2	GMDCL	0.80	0.66	▲ 21.58	1.59	1.34	▲ 18.64
3	GIPCL	0.50	0.37	▲ 35.22	1.01	0.79	▲ 27.59
4	RSMML	0.09	0.07	▲ 38.46	0.16	0.16	▼ 1.27
5	BLMCL	0.34	0.46	▼ 25.70	0.79	0.67	▲ 17.79
6	GHCL	0.01	0.00	#DIV/0!	0.02	0.01	▲ 140.00
7	VS Lignite	0.08	0.08	▲ 3.85	0.17	0.16	▲ 7.69
8	GSPL	0.19	0.16	▲ 23.08	0.36	0.22	▲ 65.45
Grand Total		4.31	3.50	▲ 23.14	8.35	6.70	▲ 24.71

Lignite Despatch

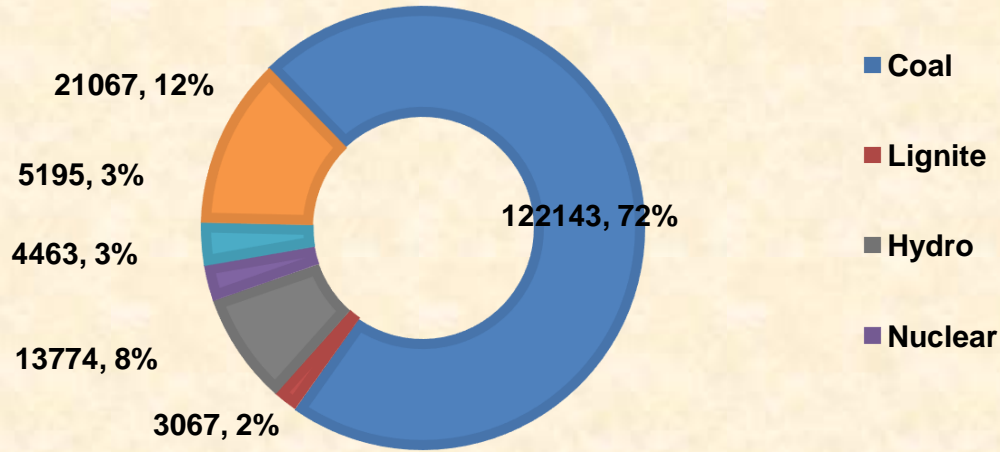


Lignite Despatch

Fig. in MT

SI No	Company	Despatch during May			Despatch upto May		
		FY 25	FY 24	Growth (%)	FY 25	FY 24	Growth (%)
1	NLCIL	2.38	1.73	▲ 37.36	4.71	3.73	▲ 26.41
2	GMDCL	0.80	0.66	▲ 21.58	1.59	1.34	▲ 18.64
3	GIPCL	0.50	0.37	▲ 35.22	1.01	0.79	▲ 27.59
4	RSMML	0.09	0.07	▲ 38.46	0.16	0.16	▼ 1.27
5	BLMCL	0.34	0.50	▼ 31.20	0.79	0.86	▼ 7.60
6	GHCL	0.01	0.01	▼ 28.57	0.01	0.02	▼ 33.33
7	VS Lignite	0.05	0.08	▼ 39.47	0.12	0.15	▼ 21.85
8	GSPL	0.19	0.16	▲ 21.52	0.33	0.22	▲ 51.13
Grand Total		4.36	3.57	▲ 22.16	8.71	7.25	▲ 20.12

POWER GENERATION DURING MAY'24 (IN MW)



Power Generation

Source-wise	May-24	% share	May-23	Apr-24	Growth(%) (May'23-May'24)	Growth(%) (Apr'24-May'24)
Coal	122143	71.97	107880	119197	▲ 13.22	▲ 2.47
Lignite	3067	1.81	2662	3283	▲ 15.21	▼ 6.58
Hydro	13774	8.12	12184	8621	▲ 13.05	▲ 59.77
Nuclear	4463	2.63	3700	4414	▲ 20.63	▲ 1.11
Gas, Naptha & Diesel	5195	3.06	2395	3712	▲ 116.91	▲ 39.96
RES (Wind, Solar, Biomass & Others)	21067	12.41	18115	17390	▲ 16.30	▲ 21.14
Total	169710	100.00	146936	156618	▲ 15.50	▲ 8.36

Source: POSOCO

Coal based power generation has registered a growth of 13.22% in May'24 as compared to May'23 and overall power generation in May'24 has been 15.50% higher than the power generated in May'23. Further, on month to month basis, Coal based power generation have been increased by 2.47% & total power generation have been increased by 8.36% in May'24 as compared to Apr'24.

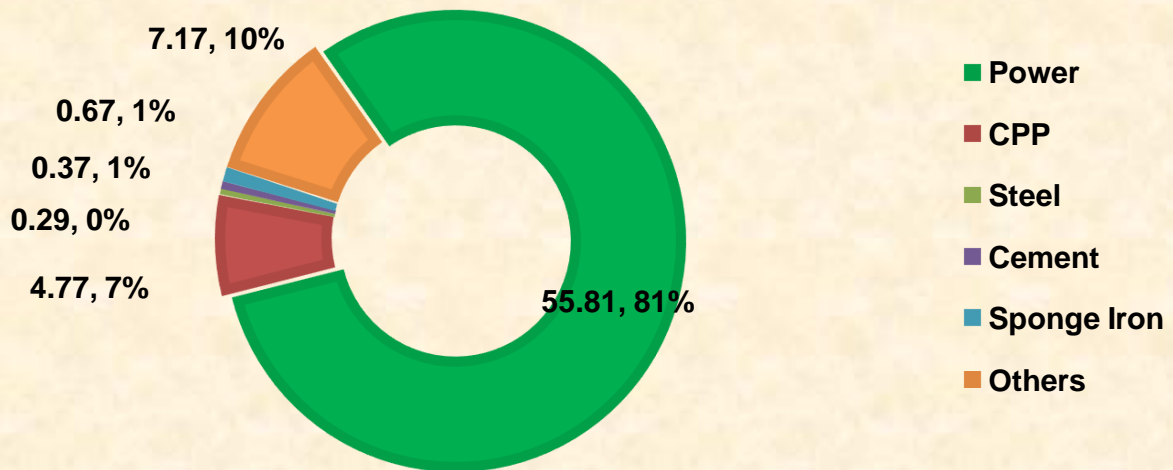
Electricity Prices and Clearing Volume in Indian Energy Exchange

Item	Type	During the period of May		
		FY 25	FY 24	Growth (%) Y-o-Y
Energy Prices (INR per MWh)	RTC	5275	4738	▲ 11.35
	Evening	7473	6371	▲ 17.29
	Day	3194	3239	▼ 1.38
	Night	6565	5696	▲ 15.25
	Morning	3365	3234	▲ 4.05
Market Clearing Volume (MWh)	RTC	5801	5375	▲ 7.92
	Evening	4704	5564	▼ 15.45
	Day	7384	5785	▲ 27.64
	Night	4657	4638	▲ 0.41
	Morning	6678	5667	▲ 17.84

Source: iexindia.com

Coal Despatch to Different Sectors

COAL DESPATCH BY CIL DURING MAY'24 (IN MT)

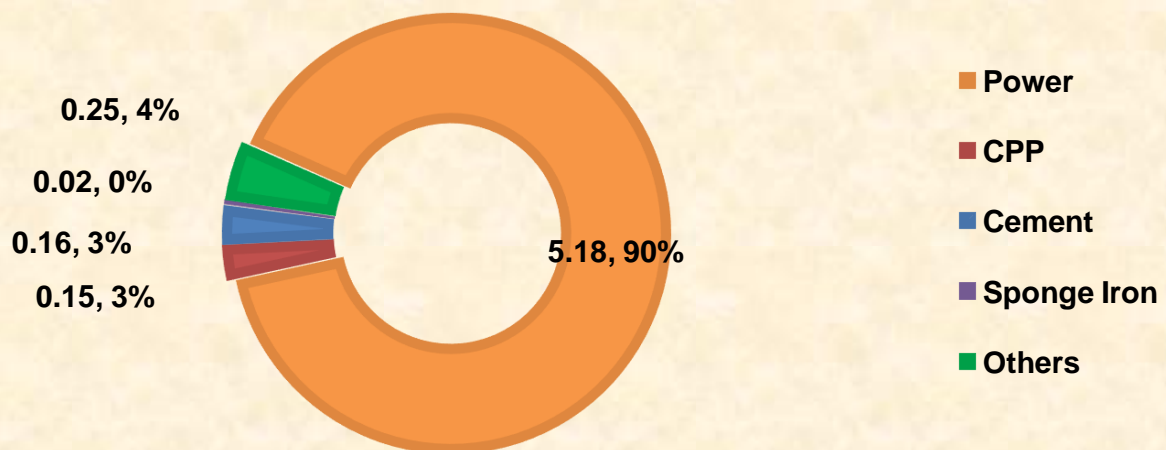


Despatch of Coal By CIL

Fig. in MT

Sectors	Coal Despatch during May'24			Coal Despatch upto May'24		
	FY 25	FY 24	Growth (%) (FY25-FY24)	FY 25	FY 24	Growth (%) (FY25-FY24)
Power	55.81	52.813	▲ 5.67	108.29	103.359	▲ 4.77
CPP	4.77	4.19	▲ 13.90	8.59	8.24	▲ 4.29
Steel	0.29	0.23	▲ 24.46	0.59	0.47	▲ 25.80
Cement	0.37	0.35	▲ 7.25	0.71	0.70	▲ 2.01
Sponge Iron	0.67	0.93	▼ 27.80	1.14	1.64	▼ 30.40
Others	7.17	5.16	▲ 38.87	13.98	11.56	▲ 20.92
Total	69.08	63.67	▲ 8.50	133.30	125.96	▲ 5.83

COAL DESPATCH BY SCCL DURING MAY'24 (IN MT)

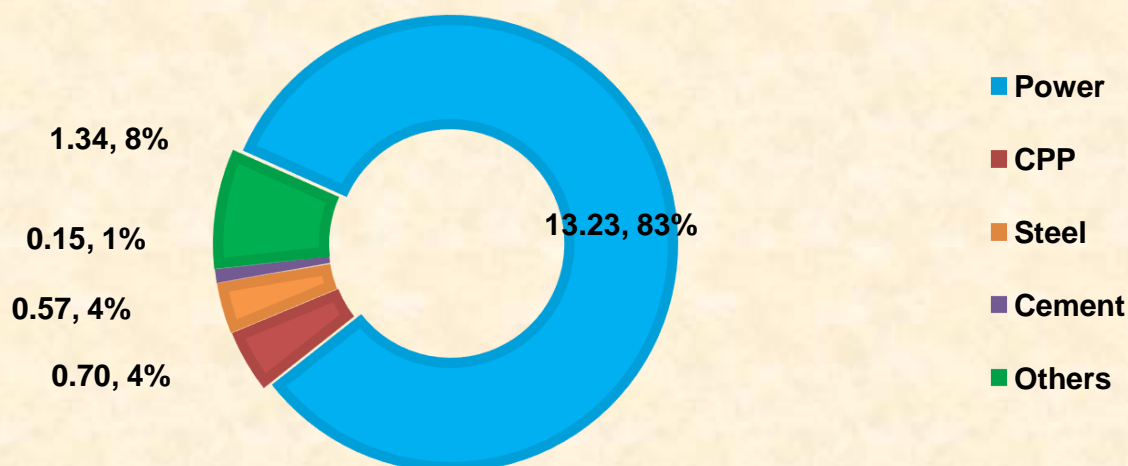


Despatch of Coal By SCCL

Fig. in MT

Sectors	Coal Despatch during May'24			Coal Despatch upto May'24		
	FY 25	FY 24	Growth (%) (FY25-FY24)	FY 25	FY 24	Growth (%) (FY25-FY24)
Power	5.18	5.33	▼ 2.81	10.35	10.39	▼ 0.38
CPP	0.15	0.28	▼ 46.43	0.31	0.56	▼ 44.64
Steel						
Cement	0.16	0.32	▼ 50.00	0.31	0.63	▼ 50.79
Sponge Iron	0.02	0.04	▼ 50.00	0.05	0.07	▼ 28.57
Others	0.25	0.31	▼ 19.35	0.47	0.63	▼ 25.40
Total	5.76	6.28	▼ 8.28	11.49	12.28	▼ 6.43

COAL DESPATCH BY CAPTIVE DURING MAY'24 (IN MT)



Coal Despatch by Captive and Others

Fig. in MT

Sectors	Coal Despatch during May'24			Coal Despatch upto May'24		
	FY 25	FY 24	Growth (%) (FY25-FY24)	FY 25	FY 24	Growth (%) (FY25-FY24)
Power	13.23	11.13	▲ 18.94	26.01	21.75	▲ 19.56
CPP	0.70	0.37	▲ 91.80	1.32	0.83	▲ 57.86
Steel	0.57	0.54	▲ 5.15	1.20	1.05	▲ 14.29
Cement	0.15	0.14	▲ 3.55	0.33	0.29	▲ 14.83
Sponge Iron						
Others	1.34	0.19	▲ 606.32	2.31	0.39	▲ 492.56
Total	16.00	12.37	▲ 29.33	31.17	24.32	▲ 28.17

Top 35 Mines Production during May'2024 (provisional)

Sr. No	Subsidiary	Mines	Annual Target (MT)	Prod. upto Apr'24 (MT)	Prod. during May'24 (MT)	Target upto May'24 (MT)	Prod. Upto May'24 (MT)	Achievement
1	ECL	RAJMAHAL OC	15.5	1.00	1.04	2.13	2.04	95.77%
2	ECL	SONEPUR BAZARI OC	12	0.92	0.92	1.65	1.84	111.52%
3	BCCL	AMLG. MURADIDH PHULARITAND OCM	5	0.37	0.53	0.75	0.90	120.00%
4	BCCL	AMLG KESHALPUR WESTMUDIDIH OCM	4.85	0.21	0.27	0.75	0.48	64.00%
5	CCL	AMRAPALI OCP	24	1.60	1.91	3.49	3.51	100.57%
6	CCL	MAGADH OCP	24	1.44	1.88	3.49	3.32	95.13%
7	CCL	AMALGAMATED KONAR KHAMMAHAL	7	0.24	0.30	1.01	0.54	53.47%
8	CCL	ASHOKA OC	6	0.61	0.68	0.87	1.29	148.28%
9	NCL	JAYANT OC MINE	30	2.60	2.44	4.86	5.04	103.70%
10	NCL	DUDHICHUA OC MINE	25	1.98	2.01	3.97	3.99	100.50%
11	NCL	NIGAHI OC MINE	25	1.95	2.20	4.40	4.15	94.32%
12	NCL	AMLOHRI OC MINE	15	1.15	1.31	2.41	2.46	102.07%
13	NCL	KHADIA OC MINE	15	1.39	1.45	2.88	2.84	98.61%
14	NCL	BINA OC MINE	10.5	1.02	1.06	1.85	2.08	112.43%
15	NCL	BLOCK B OC MINE	7.5	0.65	0.60	1.22	1.25	102.46%
16	NCL	KRISHNASHILA OC MINE	7.5	0.66	0.67	1.49	1.33	89.26%
17	WCL	MUNGOLI NIRGUDA OC MINE	5.25	0.63	0.74	0.88	1.37	155.68%
18	SECL	GEVRA OC	63	4.88	4.32	9.32	9.20	98.71%
19	SECL	KUSUMUNDA OC	52	2.30	2.51	7.62	4.81	63.12%
20	SECL	DIPKA OC	40	2.82	2.64	5.86	5.46	93.17%
21	SECL	MANIKPUR OC	5.57	0.46	0.54	0.76	1.00	131.58%
22	SECL	CHHAL OC	5.25	0.32	0.32	0.76	0.64	84.21%
23	MCL	LBL INTEGRATED PROJECT	32	2.96	3.32	4.78	6.28	131.38%
24	MCL	BHUBANESWARI OC MINE	30	0.74	1.21	4.23	1.95	46.10%
25	MCL	KULDA OC MINE	21	1.83	1.99	3.48	3.82	109.77%
26	MCL	ANANTA OC MINE	18.7	1.82	1.99	3.05	3.81	124.92%
27	MCL	GARJANBAHAL OC MINE	18.2	1.28	1.38	2.38	2.66	111.76%
28	MCL	LINGARAJ OC MINE	17	1.54	1.60	2.54	3.14	123.62%
29	MCL	BHARATHPUR OC MINE	15	0.76	1.13	2.24	1.89	84.38%
30	MCL	HINGULA OC MINE	14	0.74	0.97	2.40	1.71	71.25%
31	MCL	KANHIA OC MINE	13.99	0.81	0.84	2.09	1.65	78.95%
32	MCL	SAMLESWARI OC MINE	12.99	0.38	0.73	1.94	1.11	57.22%
33	MCL	SAIRMAL OCP	11.47	0.98	1.01	1.71	1.99	116.37%
34	MCL	BALRAM OC MINE	7.7	0.63	0.64	0.83	1.27	153.01%
35	MCL	JAGANNATH OC PLANT	7.5	0.59	0.6	1.1	1.1	101.79%
Total			624.47	44.26	47.70	95.21	91.96	96.59%

Particulars	No. of mines
Mines produced => 100%	19
Mines produced => 80% , but less than 100%	9
Mines produced => 50% , but less than 80%	6
Mines produced less than 50%	1

Top 35 Mines OBR during May'2024 (provisional)

Sr. No	Subsidiary	Mines	Annual Target (M.Cum)	OBR upto Apr'24 (M.Cum)	OBR. during May'24 (M.Cum)	Target upto May'24 (M.Cum)	OBR. Upto May'24 (M.Cum)	Achievement
1	ECL	RAJMAHAL OC	23.8	3.87	3.79	4.43	7.66	172.91%
2	ECL	SONEPUR BAZARI OC	70.59	8.29	7.56	12.91	15.85	122.77%
3	BCCL	AMLG. MURAI DIH PHULARITAND OCM	7.86	0.82	0.73	1.15	1.55	134.78%
4	BCCL	AMLG KESHALPUR WESTMUDIDIH OCM	9.6	0.62	0.72	1.58	1.34	84.81%
5	CCL	MAGADH OCP	25	1.79	1.83	4.02	3.62	90.05%
6	CCL	AMRAPALI OCP	25	2.49	2.49	4.02	4.98	123.88%
7	CCL	AMALGAMATED KONAR KHASMAHAL	7.5	0.56	0.55	1.20	1.11	92.50%
8	CCL	ASHOKA OC	6.5	0.83	0.67	1.04	1.50	144.23%
9	NCL	JAYANT OC MINE	82	6.98	5.12	13.36	12.10	90.57%
10	NCL	DUDHICHUA OC MINE	92.5	7.82	8.40	13.61	16.22	119.18%
11	NCL	NIGAHI OC MINE	90	5.44	6.16	15.24	11.60	76.12%
12	NCL	AMLOHRI OC MINE	67	7.49	7.29	12.13	14.78	121.85%
13	NCL	KHADIA OC MINE	67	4.91	6.43	11.44	11.34	99.13%
14	NCL	BINA OC MINE	50.75	4.37	4.56	8.91	8.93	100.22%
15	NCL	BLOCK B OC MINE	22	1.44	1.49	3.33	2.93	87.99%
16	NCL	KRISHNASHILA OC MINE	22.5	1.86	1.82	3.97	3.68	92.70%
17	WCL	MUNGOLI NIRGUDA OC MINE	25	2.50	2.93	4.68	5.43	116.03%
18	SECL	GEVRA OC	82	6.90	6.86	14.73	13.76	93.41%
19	SECL	KUSUMUNDA OC	65	3.86	4.18	11.67	8.04	68.89%
20	SECL	DIPKA OC	42	3.06	3.42	7.54	6.48	85.94%
21	SECL	MANIKPUR OC	13	1.11	1.09	2.33	2.20	94.42%
22	SECL	CHHAL OC	26	3.62	3.59	4.67	7.21	154.39%
23	MCL	LBL INTEGRATED PROJECT	58.5	6.87	7.59	9.40	14.46	153.83%
24	MCL	BHUBANESWARI OC MINE	47.79	3.43	4.01	9.91	7.44	75.08%
25	MCL	KULDA OC MINE	9	1.34	1.45	1.44	2.79	193.75%
26	MCL	ANANTA OC MINE	27.99	2.76	2.72	4.49	5.48	122.05%
27	MCL	GARJANBAHAL OC MINE	15	1.68	1.74	2.40	3.42	142.50%
28	MCL	LINGARAJ OC MINE	12	1.23	1.24	1.92	2.47	128.65%
29	MCL	BHARATHPUR OC MINE	15	1.29	1.30	2.40	2.59	107.92%
30	MCL	HINGULA OC MINE	26	2.56	2.82	4.17	5.38	129.02%
31	MCL	KANHIA OC MINE	8	0.71	0.66	1.28	1.37	107.03%
32	MCL	SAMLESWARI OC MINE	35	2.98	3.18	5.62	6.16	109.61%
33	MCL	SAIRMAL OCP	12	1.36	1.54	1.92	2.90	151.04%
34	MCL	BALRAM OC MINE	14.99	1.50	1.12	2.40	2.62	109.17%
35	MCL	JAGANNATH OC PLANT	8	0.65	0.7	1.3	1.3	103.13%
Total			1211.87	108.99	111.72	206.59	220.71	106.83%

Particulars	No. of mines
Mines produced => 100%	22
Mines produced => 80% , but less than 100%	10
Mines produced => 50% , but less than 80%	3
Mines produced less than 50%	0

Coal Production in mines of all Subsidiaries of CIL (provisional data)

Fig. in MT

SI No	Subs	Types of Mines	No of Mines	Annual Target (MT)	During May			Upto May		
					FY 25	FY 24	Growth (%) M-O-M	FY 25	FY 24	Growth (%) Y-O-Y
1	ECL	Top 35	2	27.50	1.96	1.70	▲ 15.36	3.88	3.18	▲ 22.05
		Others	5	11.07	0.65	0.75	▼ 13.22	1.13	1.42	▼ 20.42
		Top 84	7	38.57	2.61	2.45	▲ 6.62	5.01	4.60	▲ 8.94
		Rest	68	15.43	1.30	1.04	▲ 24.76	2.84	2.07	▲ 37.32
	Overall ECL	75	54.00	3.91	3.49	▲ 12.03	7.85	6.67	▲ 17.73	
2	BCCL	Top 35	2	9.85	0.80	0.40	▲ 100.00	1.38	0.78	▲ 76.92
		Others	5	17.50	1.57	1.99	▼ 21.26	2.91	3.92	▼ 25.75
		Top 84	7	27.35	2.37	2.39	▼ 0.96	4.29	4.70	▼ 8.70
		Rest	27	27.50	1.36	0.94	▲ 45.00	2.77	1.83	▲ 51.75
	Overall BCCL	32	45.00	3.73	3.33	▲ 12.01	7.06	6.53	▲ 8.23	
3	CCL	Top 35	4	61.00	4.77	4.37	▲ 9.25	8.66	8.02	▲ 8.03
		Others	10	21.78	1.25	1.00	▲ 25.51	2.54	1.88	▲ 35.04
		Top 84	14	82.78	6.02	5.36	▲ 12.27	11.20	9.90	▲ 13.17
		Rest	23	17.22	0.67	0.99	▼ 32.19	1.58	1.88	▼ 16.30
	Overall CCL	37	100.00	6.69	6.35	▲ 5.35	12.78	11.78	▲ 8.45	
4	MCL	Top 35	13	219.55	17.36	14.90	▲ 16.52	32.42	29.60	▲ 9.53
		Others	1	4.50	0.47	0.49	▼ 3.87	1.21	0.85	▲ 42.35
		Top 84	14	224.05	17.83	15.39	▲ 15.87	33.63	30.45	▲ 10.44
		Rest	4	0.95	0.14	0.76	▼ 81.63	0.34	0.28	▲ 22.34
	Overall MCL	18	225.00	17.97	16.15	▲ 11.27	33.98	30.73	▲ 10.55	
5	NCL	Top 35	8	135.50	11.74	10.55	▲ 11.28	23.14	22.14	▲ 4.52
		Others	1	2.50	0.30	0.46	▼ 34.78	0.60	0.58	▲ 3.45
		Top 84	9	138.00	12.04	11.01	▲ 9.36	23.74	22.72	▲ 4.49
		Rest	1	1.00	0.06	0.57	▼ 89.47	0.16	0.40	▼ 58.94
	Overall NCL	10	139.00	12.10	11.58	▲ 4.49	23.90	23.12	▲ 3.40	
6	SECL	Top 35	5	165.82	10.33	8.92	▲ 15.81	21.11	20.53	▲ 2.83
		Others	10	24.70	3.21	2.25	▲ 42.62	5.77	4.72	▲ 22.32
		Top 84	15	190.52	13.54	11.17	▲ 21.21	26.88	25.25	▲ 6.47
		Rest	44	15.48	0.24	2.43	▼ 90.08	1.04	2.47	▼ 58.13
	Overall SECL	59	206.00	13.78	13.60	▲ 1.32	27.92	27.72	▲ 0.71	
7	WCL	Top 35	1	5.25	0.74	0.48	▲ 54.33	1.37	1.39	▼ 1.10
		Others	17	47.98	3.98	1.62	▲ 145.98	8.39	7.18	▲ 16.86
		Top 84	18	53.23	4.72	2.10	▲ 125.03	9.76	8.57	▲ 13.95
		Rest	33	15.77	1.50	3.32	▼ 54.85	2.90	2.37	▲ 22.13
	Overall WCL	51	69.00	6.22	5.42	▲ 14.76	12.66	10.94	▲ 15.73	
8	CIL	Top 35	35	624.47	47.70	41.31	▲ 15.46	91.96	85.63	▲ 7.39
		Others	49	125.53	11.43	8.55	▲ 33.61	22.55	20.55	▲ 9.75
		Top 84	84	750.00	59.13	49.87	▲ 18.57	114.51	106.18	▲ 7.85
		Rest of mines	198	88.00	5.27	10.06	▼ 47.60	11.67	11.32	▲ 3.06
	Overall CIL	282	838.00	64.40	59.93	▲ 7.46	126.18	117.50	▲ 7.39	

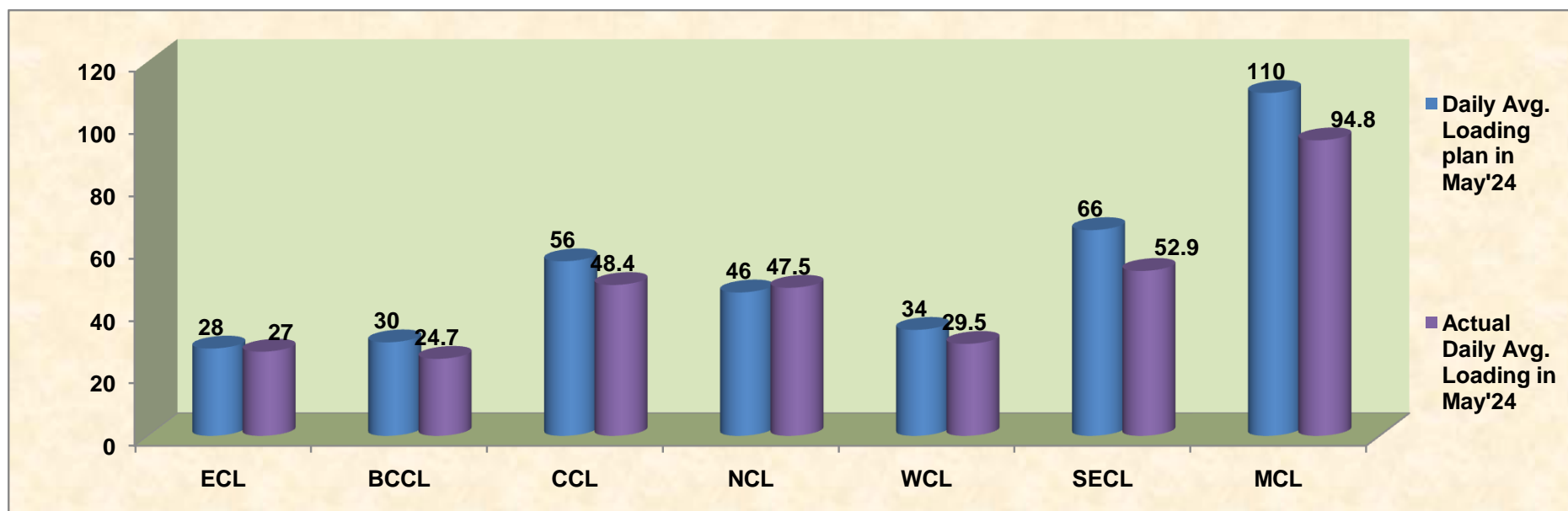
Top 84 = Top 35 + others mines including in top 84 mines

Rest of Mines = other than top 84

Overall Mines = Top 84 + rest of mines

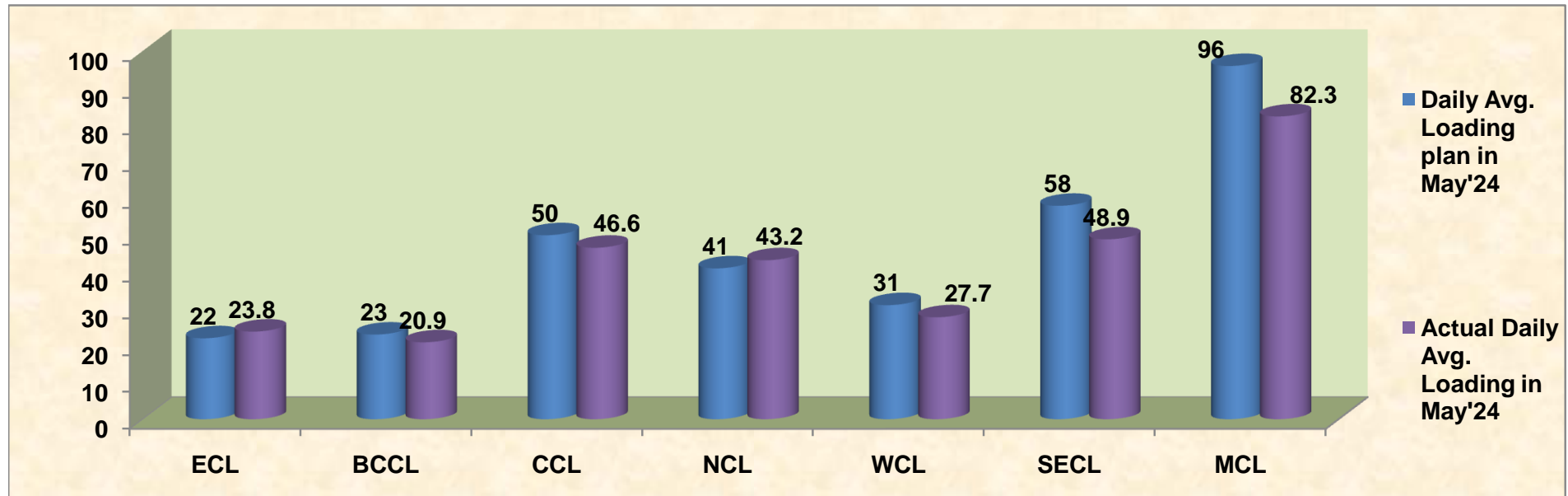
Company-wise movement of rakes for all sectors per day during FY 2024-25 (Prov.)

Company	Daily Avg. Loading plan in May'24	Actual Daily Avg. Loading in May'24	Achievemnt (%)	Actual Daily Avg. Loading in May'23	Growth% (May'23 to May'24)
ECL	28	27	96.43	20.6	▲ 31.07
BCCL	30	24.7	82.33	23.2	▲ 6.47
CCL	56	48.4	86.43	42	▲ 15.24
NCL	46	47.5	103.26	39.7	▲ 19.65
WCL	34	29.5	86.76	25.6	▲ 15.23
SECL	66	52.9	80.15	42.4	▲ 24.76
MCL	110	94.8	86.18	86.4	▲ 9.72
Total	370.0	324.8	87.78	279.9	▲ 16.04



Company-wise movement of rakes for power sector per day during FY 2024-25 (Prov.)

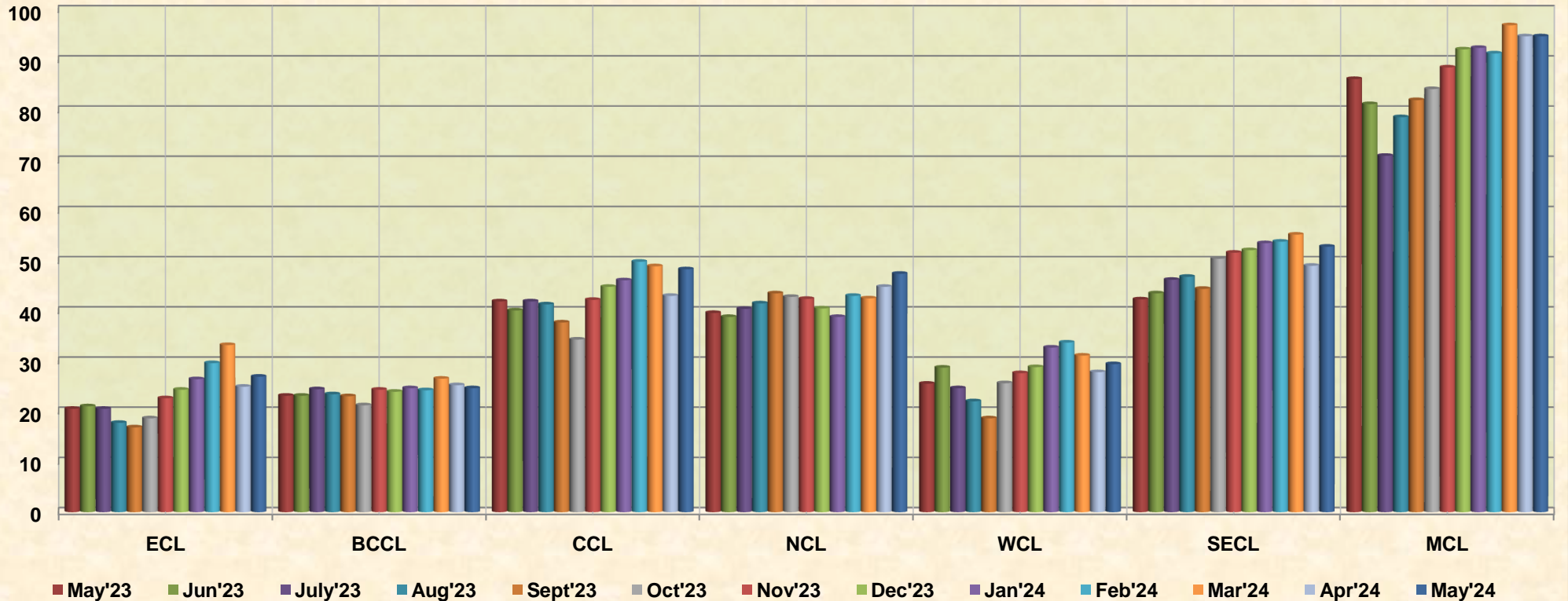
Company	Daily Avg. Loading plan in May'24	Actual Daily Avg. Loading in May'24	Achievemnt (%)	Actual Daily Avg. Loading in May'23	Growth% (May'23 to May'24)
ECL	22	23.8	108.18	18.5	▲ 28.65
BCCL	23	20.9	90.87	20.4	▲ 2.45
CCL	50	46.6	93.20	40.2	▲ 15.92
NCL	41	43.2	105.37	38	▲ 13.68
WCL	31	27.7	89.35	25.6	▲ 8.20
SECL	58	48.9	84.31	41.4	▲ 18.12
MCL	96	82.3	85.73	79.5	▲ 3.52
Total	321.00	293.40	91.40	263.60	▲ 11.31



Company-wise movement of rakes for all sectors per day during May'23 to May'24(Provisional)

COMPANY	May'23	Jun'23	July'23	Aug'23	Sept'23	Oct'23	Nov'23	Dec'23	Jan'24	Feb'24	Mar'24	Apr'24	May'24
ECL	20.6	21.1	20.6	17.8	16.9	18.7	22.7	24.4	26.5	29.7	33.3	25	27
BCCL	23.2	23.2	24.5	23.5	23.1	21.3	24.4	24	24.7	24.3	26.6	25.3	24.7
CCL	42	40.2	42	41.4	37.8	34.4	42.3	44.9	46.2	49.9	49	43.1	48.4
NCL	39.7	38.9	40.5	41.6	43.6	42.9	42.5	40.6	38.9	43.1	42.6	44.9	47.5
WCL	25.6	28.8	24.7	22.1	18.7	25.7	27.7	28.9	32.8	33.8	31.2	27.9	29.5
SECL	42.4	43.6	46.3	46.9	44.5	50.5	51.7	52.2	53.6	53.9	55.3	49.1	52.9
MCL	86.3	81.3	71	78.7	82.1	84.3	88.6	92.2	92.5	91.4	97	94.8	94.8
Total	279.8	277.1	269.6	272	266.70	277.80	299.90	307.20	315.20	326.10	335.00	310.10	324.80

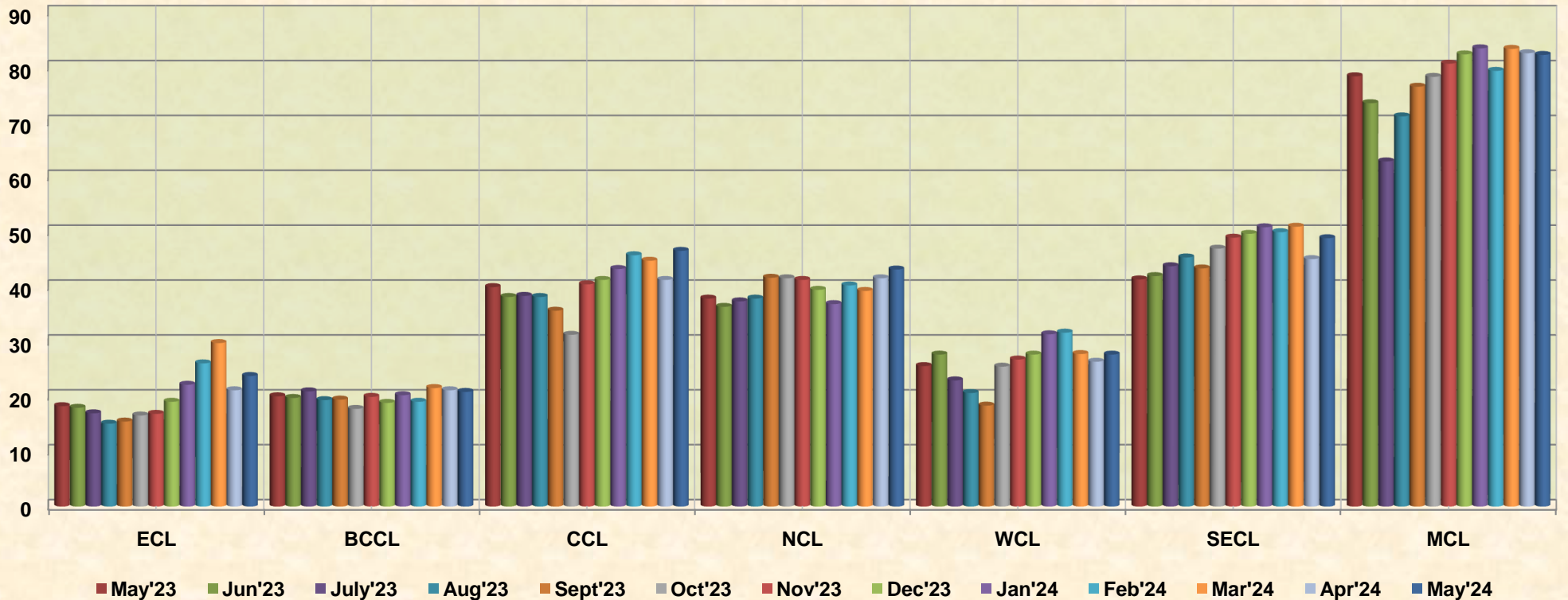
Actual Rakes Loading Status (All Sectors)



Company-wise movement of rakes for power sector per day during May'23 to May'24(Provisional)

COMPANY	May'23	Jun'23	July'23	Aug'23	Sept'23	Oct'23	Nov'23	Dec'23	Jan'24	Feb'24	Mar'24	Apr'24	May'24
ECL	18.3	18	17	15.1	15.5	16.6	16.9	19.1	22.2	26.1	29.8	21.2	23.8
BCCL	20.1	19.8	21	19.4	19.5	17.8	20	18.9	20.3	19.1	21.6	21.2	20.9
CCL	40	38.2	38.4	38.2	35.7	31.3	40.5	41.3	43.3	45.8	44.8	41.3	46.6
NCL	37.9	36.4	37.4	37.9	41.7	41.6	41.3	39.5	36.9	40.3	39.3	41.6	43.2
WCL	25.6	27.7	23	20.7	18.4	25.5	26.8	27.7	31.4	31.7	27.8	26.4	27.7
SECL	41.4	42	43.8	45.4	43.4	47	49	49.7	50.9	50	51	45.1	48.9
MCL	78.4	73.5	62.9	71.1	76.5	78.3	80.7	82.4	83.5	79.4	83.4	82.6	82.3
Total	261.7	255.6	243.5	247.8	250.7	258.10	275.20	278.60	288.50	292.40	297.70	279.40	293.40

Actual Rakes Loading Status (Power Sectors)

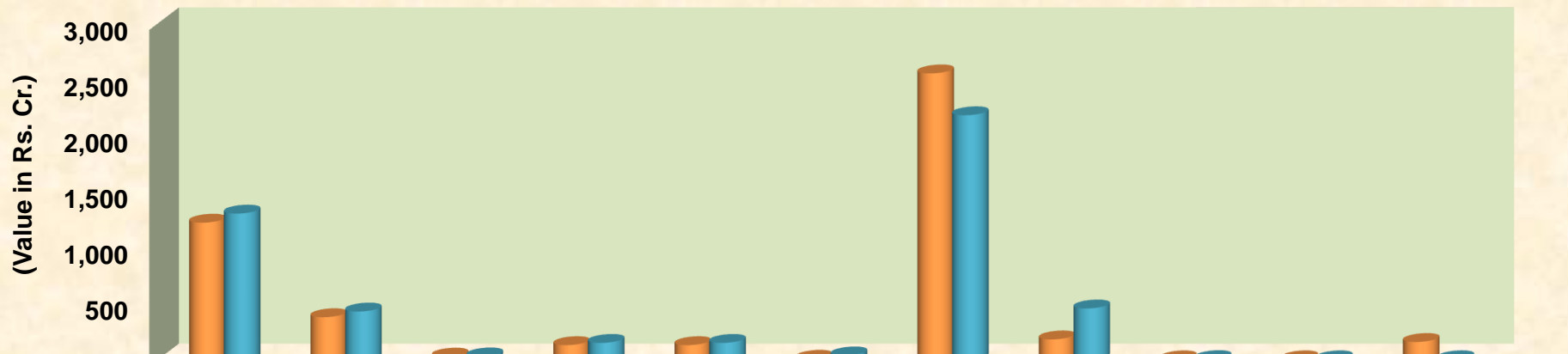


Payment made by CIL to government exchequer (Central and State) upto the period of May'2024 (FY 2024-25) (Prov.)

Particulars	Total levies paid (Rs. Cr.)		Total levies paid (Rs. Cr.)		Progressive Growth(%)
	May'2024	May'2023	Upto May'2024	Upto May'2023	
Royalty	1,219.61	1300.74	2,099.74	2,432.97	▼ 13.70
<i>Addnl Royalty under MMDR Act</i>					
-DMF	375.97	426.51	719.07	814.84	▼ 11.75
-NMET	24.76	26.23	47.82	52.12	▼ 8.25
<i>Goods and Service Tax:</i>					
-CGST	126.68	146.6	384.94	372.97	▲ 3.21
-SGST	126.68	146.6	379.24	372.97	▲ 1.68
-IGST	5.19	34.8	25.06	79.78	▼ 68.59
GST Compensation Cess	2,551.87	2178.56	5,296.07	4,749.27	▲ 11.51
Cess on coal	177.79	453.72	324.54	597.29	▼ 45.66
State Sales Tax / VAT	-	1.98	-	1.98	
Central Sales Tax	-	0	-	0	
Others	154.65	0.76	283.80	303.45	▼ 6.48
Total	4,763.20	4716.5	9,560.28	9777.64	▼ 2.22

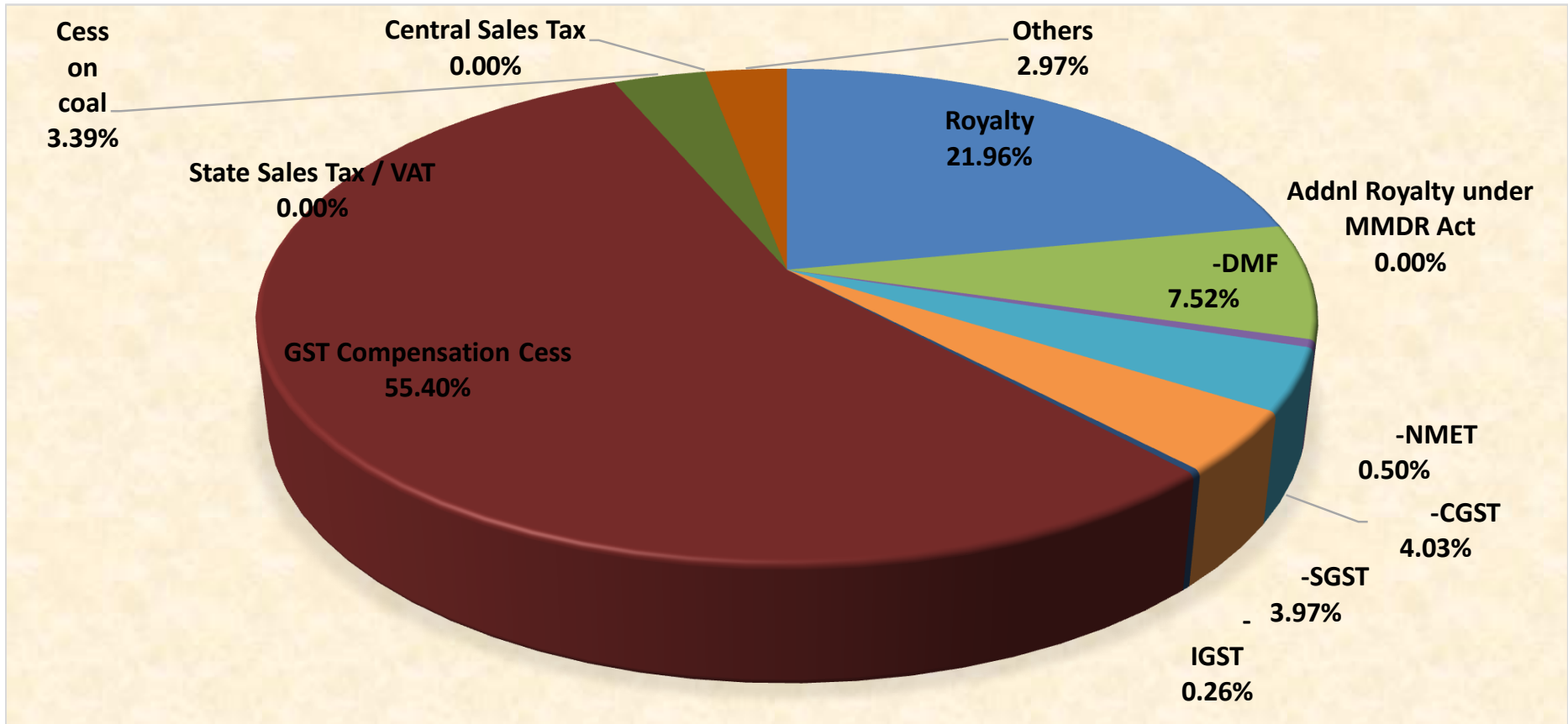
Note: This exchequer report is on cash payment basis.

Status of Tax paid on Coal by CIL





Share of Tax paid by CIL in May'2024

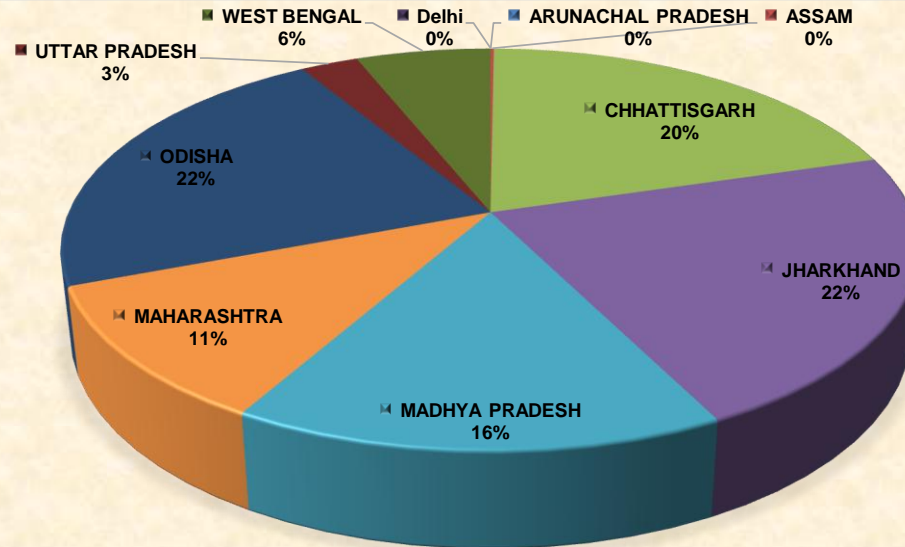


Payment made by CIL to government exchequer (Central and State) upto the period of May'2024 (FY 2024-25) (Prov.)

Rs. Crore

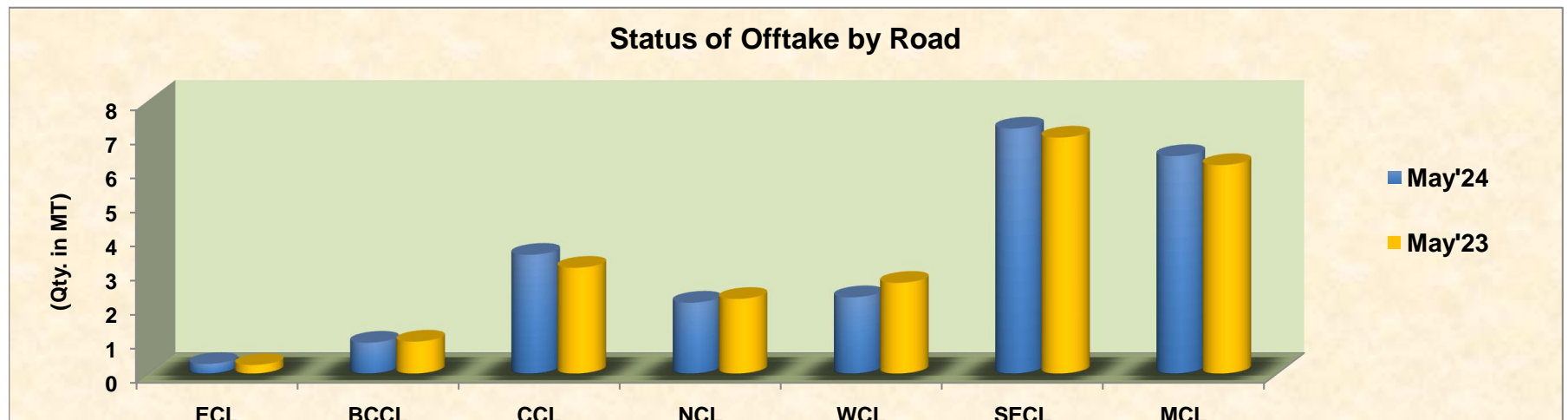
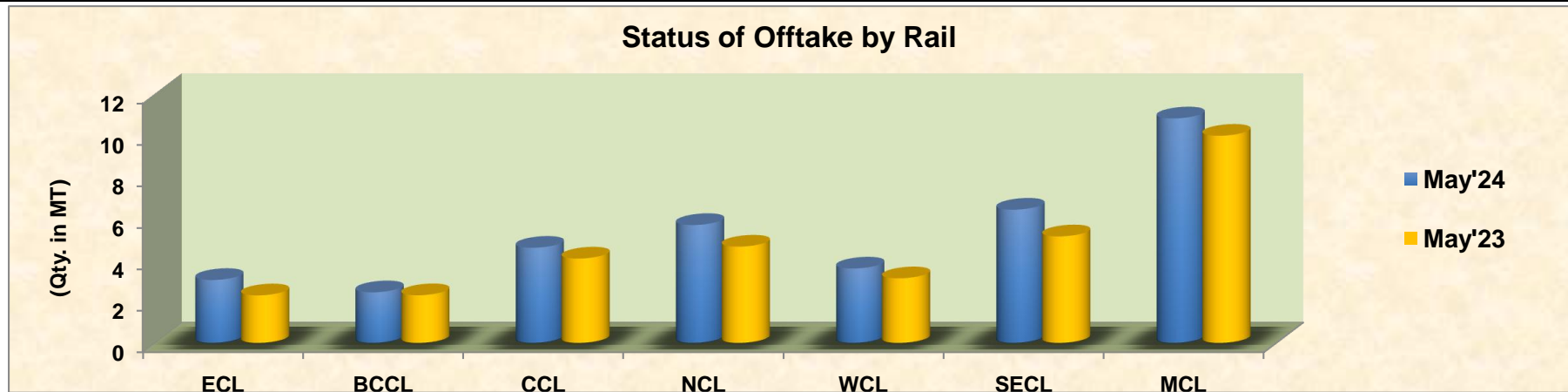
Particulars	ARUNACHAL	ASSAM	CHHATTISGARH	JHARKHAND	MADHYA	MAHARASHTRA	ODISHA	UTTAR	WEST	Delhi	Total
Royalty	0.00	7.11	338.19	594.98	360.40	341.68	397.20	54.30	5.88	0.00	2099.74
Addnl Royalty under MMDR Act	-	-	-	-	-	-	-	-	-	-	0.00
-DMF	0.00	2.13	145.33	177.37	109.77	119.21	146.96	16.56	1.73	0.00	719.07
-NMET	0.00	0.14	9.56	11.61	7.32	7.96	9.75	1.37	0.12	0.00	47.82
Goods and Service Tax:	0.00	0.00	0.00	0.00	0.00	0.00	0.00	0.00	0.00	0.00	0.00
-CGST	0.01	0.99	78.52	112.28	62.89	47.18	68.89	11.40	2.77	0.01	384.94
-SGST	0.01	0.99	78.52	106.58	62.89	47.18	68.89	11.40	2.77	0.01	379.24
-IGST	0.00	0.00	2.75	16.05	1.45	1.57	0.98	0.68	1.58	0.00	25.06
GST Compensation Cess	0.09	3.01	1177.95	986.37	842.22	483.66	1421.70	140.26	240.81	0.00	5296.07
Cess on coal	0.00	0.00	0.00	0.00	0.00	0.00	0.00	0.00	324.53	0.00	324.54
State Sales Tax / VAT	0.00	0.00	0.00	0.00	0.00	0.00	0.00	0.00	0.00	0.00	0.00
Central Sales Tax	0.00	0.00	0.00	0.00	0.00	0.00	0.00	0.00	0.00	0.00	0.00
Others	0.00	0.22	102.77	117.15	49.86	0.00	1.78	12.02	0.00	0.00	283.80
Total	0.11	14.59	1933.59	2122.39	1496.80	1048.44	2116.15	247.99	580.19	0.02	9560.28

State-wise share in tax paid in FY 2024-25



CIL Modewise Offtake in May'24 (Prov.) in MT

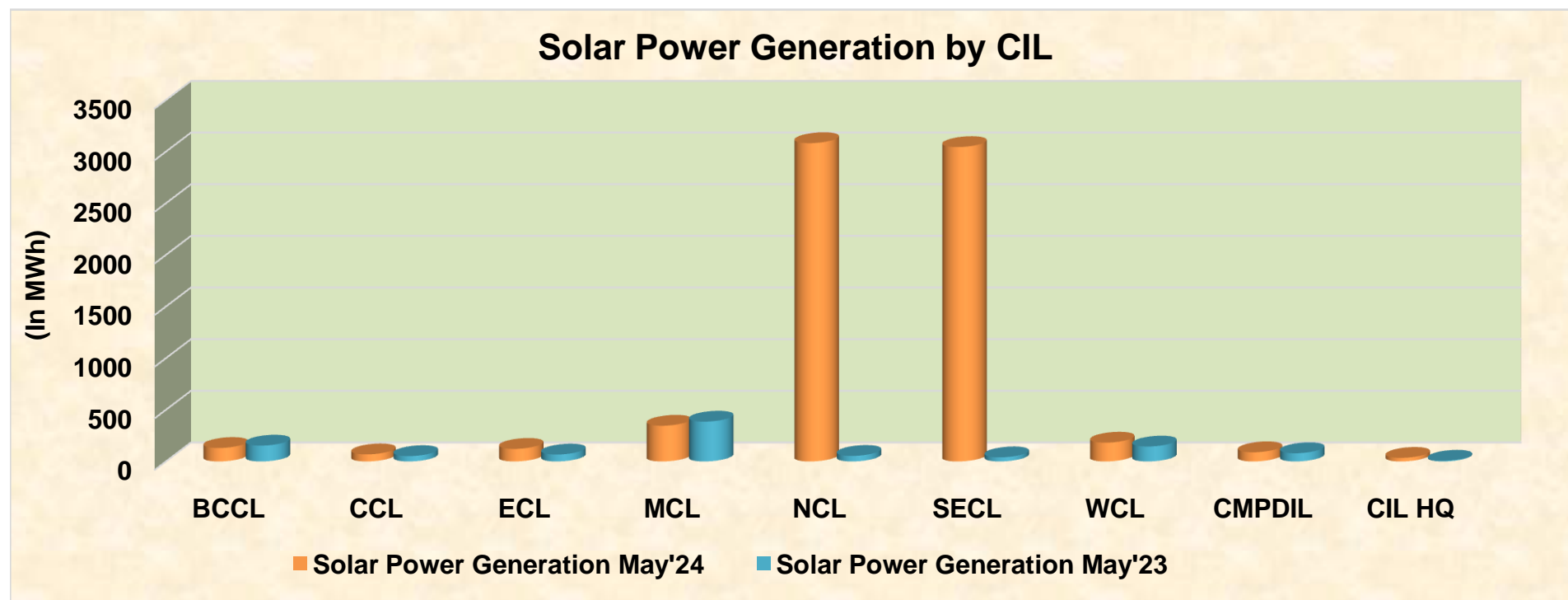
Company	Rail		Road		MGR		Total	
Company	May'24	May'23	May'24	May'23	May'24	May'23	May'24	May'23
ECL	3.04	2.30	0.29	0.26	1.19	0.66	4.51	3.22
BCCL	2.45	2.31	0.91	0.94	0.00	0.00	3.36	3.25
CCL	4.59	4.07	3.49	3.11	0.00	0.00	8.08	7.18
NCL	5.69	4.65	2.08	2.19	4.57	4.70	12.34	11.82
WCL	3.59	3.12	2.24	2.66	0.05	0.00	6.23	5.99
SECL	6.43	5.14	7.19	6.92	2.28	2.52	16.47	15.18
MCL	10.82	9.99	6.38	6.12	0.85	0.91	18.06	17.02
NEC	0.01	0.00	0.02	0.01	0.00	0.00	0.03	0.01
CIL	36.62	31.58	22.60	22.21	8.93	8.80	69.08	63.67



Solar power generation for the month of May'2024 vis-à-vis May'2023

(In MWh)

S. No.	Subsidiary	Solar Power Generation May'24	Solar Power Generation May'23	Growth (%)	Progressive Solar Power Generation	Progressive Solar Power Generation	Growth (%)
1	BCCL	130.59	153.80	▼ 15.09	259.71	300.12	▼ 13.47
2	CCL	68.63	51.97	▲ 32.07	154.15	99.75	▲ 54.53
3	ECL	121.99	67.15	▲ 81.66	246.99	125.67	▲ 96.54
4	MCL	346.30	385.72	▼ 10.22	652.97	745.95	▼ 12.47
5	NCL	3082.70	53.94	▲ 5615.16	4834.57	100.84	▲ 4694.39
6	SECL	3044.52	39.93	▲ 7525.59	5124.57	80.36	▲ 6277.10
7	WCL	182.01	144.53	▲ 25.93	360.60	279.97	▲ 28.80
8	CMPDIL	89.00	79.82	▲ 11.50	170.74	145.86	▲ 17.06
9	CIL HQ	34.96	7.11	▲ 391.56	69.63	13.38	▲ 420.33
TOTAL		7100.70	983.96	▲ 621.65	11873.93	1891.91	▲ 527.62



Solar Power Generation share in May'2024

