

Monthly Coal Statistics for Feb'2023(Provisional)

Coal Production

India's coal production increased by 8.90% to 86.62 MT from 79.54 MT during Feb'23 as compared to Feb'22. During Feb'23, CIL & Captives/ Others registered a growth of 7.03% & 27.70% respectively, whereas SCCL registered a negative growth of 0.02%.

Fig. in MT

SI No	Subs	Monthly Target	Production during Feb'23				Production upto Feb'23		
			FY 23	Achmt.(%)	FY 22	Growth (%) (FY23-FY22)	FY 23	FY 22	Growth (%) (FY23-FY22)
1	ECL	5.61	3.36	59.89	3.54	-5.08	30.46	28.31	7.59
2	BCCL	3.41	3.23	94.72	3.24	-0.31	32.66	26.59	22.83
3	CCL	7.98	7.69	96.37	7.77	-1.03	64.17	57.63	11.35
4	NCL	10.64	10.85	101.97	11.51	-5.73	119.52	109.94	8.71
5	WCL	7.31	8.01	109.58	6.87	16.59	54.34	47.45	14.52
6	SECL	18.36	18.37	100.05	15.18	21.01	144.42	121.85	18.52
7	MCL	17.92	17.25	96.26	16.14	6.88	173.95	150.60	15.50
8	NEC		0.02				0.17		
CIL		71.23	68.78	96.56	64.26	7.03	619.70	542.38	14.26
9	SCCL	6.33	6.03	95.32	6.03	-0.02	60.13	58.57	2.66
10	Captives/Others	16.14	11.81	73.15	9.25	27.70	105.40	80.55	30.85
Grand Total		93.70	86.62	92.44	79.54	8.90	785.23	681.50	15.22

Coking Coal Production

Fig. in MT

SI No	Subs	Monthly Target	Production during Feb'23			Production upto Feb'23		
			FY 23	FY 22	Growth (%) (FY23-FY22)	FY 23	FY 22	Growth (%) (FY23-FY22)
1	ECL	0.00	0.00	0.00	250.00	0.01	0.01	-56.20
2	BCCL	3.24	3.04	3.10	-2.03	30.34	25.24	20.22
3	CCL	2.16	2.29	2.05	11.70	17.16	13.91	23.37
5	WCL	0.01	0.01	0.01	-50.00	0.09	0.15	-40.41
6	SECL	0.03	0.02	0.02	5.56	0.22	0.20	11.00
CIL		5.44	5.35	5.18	3.33	47.82	39.51	21.04
7	Captives/Others		0.59	0.46	29.98	5.63	4.59	22.49
Grand Total		5.44	5.95	5.64	5.49	53.44	44.10	21.19

Coal Despatch

India's coal despatch increased by 5.05% to 74.87 MT from 71.27 MT during Feb'23 as compared to Feb'22. During Feb'23, CIL, SCCL and Captives/Others registered a growth of 1.41%, 10.74% & 26.14% by despatching 58.26 MT, 5.99 MT & 10.61 MT respectively.

Fig. in MT

SI No	Subs	Monthly Target	Despatch during Feb'23				Despatch upto Feb'23		
			FY 23	Achmt.(%)	FY 22	Growth (%) (FY23-FY22)	FY 23	FY 22	Growth (%) (FY23-FY22)
1	ECL	5.51	3.18	57.71	2.93	8.53	31.55	32.34	-2.44
2	BCCL	2.74	2.91	106.20	2.94	-1.02	32.18	28.92	11.27
3	CCL	6.76	6.38	94.38	6.74	-5.34	67.60	64.60	4.64
4	NCL	10.04	10.42	103.78	10.70	-2.62	122.43	114.35	7.07
5	WCL	5.46	5.98	109.52	6.06	-1.32	55.38	57.88	-4.32
6	SECL	16.09	14.01	87.07	13.55	3.39	145.13	141.15	2.82
7	MCL	14.42	15.36	106.52	14.53	5.71	176.09	160.61	9.64
8	NEC		0.03				0.15		
CIL		61.02	58.26	95.48	57.45	1.41	630.51	599.85	5.11
9	SCCL	6.33	5.99	94.64	5.41	10.74	60.09	59.58	0.86
10	Captives	16.14	10.61	65.75	8.41	26.14	104.09	81.53	27.68
Grand Total		83.49	74.87	89.68	71.27	5.05	794.69	740.96	7.25

The Power utilities despatch has increased by 2.40% to 61.13 MT during Feb'23 as compared to 59.70 MT in Feb'22.

Coal Despatch to Different Sectors

Fig. in MT

Sectors	Despatch during Feb			Despatch upto Feb		
	FY 23	FY 22	Growth (%) (FY23-FY22)	FY 23	FY 22	Growth (%) (FY23-FY22)
Power	61.13	59.70	2.40	669.94	610.82	9.68
CPP	4.50	2.49	80.65	40.73	40.04	1.73
Steel	0.88	0.55	59.35	8.58	5.80	47.97
Cement	0.69	0.65	6.12	6.98	6.71	4.09
Sponge Iron	0.63	0.82	-22.45	6.82	7.43	-8.17
Others	7.03	7.06	-0.50	61.63	70.17	-12.16
Total	74.87	71.27	5.05	794.69	740.96	7.25

Lignite Production

Fig. in MT

SI No	Company	Production during Feb'23			Production upto Feb'23		
		FY 23	FY 22	Growth (%) (FY23-FY22)	FY 23	FY 22	Growth (%) (FY23-FY22)
1	NLCIL	2.03	2.51	-18.84	21.61	21.26	1.69
2	GMDCL	0.80	0.83	-3.74	7.34	7.67	-4.21
3	GIPCL	0.34	0.37	-8.65	2.67	2.55	4.75
4	RSMML	0.09	0.16	-45.40	1.06	1.83	-41.99
5	BLMCL	0.69	0.58	20.52	5.22	5.45	-4.17
6	GHCL	0.00	0.01	-100.00	0.07	0.08	-4.00
7	VS Lignite	0.06	0.07	-14.86	0.87	0.89	-1.80
8	GSPL	0.19	0.16	19.14	1.39	1.61	-14.08
Grand Total		4.21	4.69	-10.20	40.24	41.32	-2.62

Lignite Despatch

Fig. in MT

SI No	Company	Despatch during Feb'23			Despatch upto Feb'23		
		FY 23	FY 22	Growth (%) (FY23-FY22)	FY 23	FY 22	Growth (%) (FY23-FY22)
1	NLCIL	1.97	2.21	-10.83	22.55	24.55	-8.13
2	GMDCL	0.80	0.83	-3.74	7.34	7.67	-4.21
3	GIPCL	0.34	0.37	-8.65	2.67	2.55	4.75
4	RSMML	0.09	0.16	-45.40	1.06	1.83	-41.99
5	BLMCL	0.55	0.39	40.97	5.47	5.23	4.75
6	GHCL	0.00	0.01	-42.86	0.08	0.07	18.46
7	VS Lignite	0.06	0.07	-14.86	0.91	0.86	5.22
8	GSPL	0.18	0.18	0.56	1.26	1.67	-24.45
Grand Total		3.99	4.22	-5.40	41.34	44.41	-6.91

Power Generation

Fig in MU

Source-wise	Feb-23	% share	Feb-22	Jan-23	Growth(%) (Feb'23-Feb'22)	Growth(%) (Feb'23-Jan'23)
Coal	97028	75.79	85534	104407	13.44	-7.07
Lignite	3026	2.36	2298	2854	31.68	6.03
Hydro	8834	6.90	7805	8578	13.18	2.98
Nuclear	3748	2.93	3460	4106	8.32	-8.72
Gas, Naptha & Diesel	1829	1.43	1819	1810	0.55	1.05
RES (Wind, Solar, Biomass & Others)	13561	10.59	11615	15218	16.75	-10.89
Total	128026	100.00	112531	136973	13.77	-6.53

Coal based power generation has registered a growth of 13.44% in Feb'23 as compared to Feb'22 and overall power generation in Feb'23 has been 13.77% higher than the power generated in Feb'22. However, total power generation has reduced in Feb'23 to 128026 MU from 136973 MU in Jan'23 and registered a negative growth of 6.53%.

Electricity Prices and Clearing Volume in Indian Energy Exchange

Item	Type	During the period of Jan		
		FY 23	FY 22	Growth (%)
Energy Prices (INR per MWh)	RTC	6680.51	4443.08	50.36
	Evening	8047.06	5185.33	55.19
	Day	5590.85	4033.31	38.62
	Night	4823.74	2527.54	90.85
	Morning	9786.93	7399.04	32.27
Market Clearing Volume (BU)	RTC	6932.68	8351.3	-16.99
	Evening	6178.27	7451.69	-17.09
	Day	6655.47	8600.82	-22.62
	Night	7548.23	7723.06	-2.26
	Morning	7472.23	10363.48	-27.90
	Total	4658763.16	5612072.91	-16.99

Despatch of Coal By CIL

Fig. in MT

Sectors	Coal Despatch during Feb'23			Coal Despatch upto Feb'23		
	FY 23	FY 22	Growth (%) (FY23-FY22)	FY 23	FY 22	Growth (%) (FY23-FY22)
Power	47.58	47.89	-0.64	533.33	487.32	9.44
CPP	3.83	2.00	91.88	35.15	35.59	-1.23
Steel	0.29	0.13	116.42	2.96	1.35	118.77
Cement	0.35	0.31	13.64	3.05	3.20	-4.69
Sponge Iron	0.60	0.79	-23.66	6.48	7.23	-10.32
Others	5.61	6.34	-11.50	49.54	65.17	-23.98
Total	58.26	57.45	1.41	630.51	599.85	5.11

Despatch of Coal By SCCL

Fig. in MT

Sectors	Coal Despatch during Feb'23			Coal Despatch upto Feb'23		
	FY 23	FY 22	Growth (%) (FY23-FY22)	FY 23	FY 22	Growth (%) (FY23-FY22)
Power	4.919	4.22	16.67	49.56	48.86	1.42
CPP	0.35	0.34	2.67	2.77	2.97	-6.76
Steel						
Cement	0.28	0.28	2.54	2.91	2.76	5.47
Sponge Iron	0.03	0.03	10.34	0.34	0.21	67.80
Others	0.41	0.55	-25.54	4.51	4.78	-5.65
Total	5.99	5.41	10.74	60.09	59.58	0.86

Coal Despatch to Different Sectors by Captive and Others

Fig. in MT

Sectors	Coal Despatch during Feb'23			Coal Despatch upto Feb'23		
	FY 23	FY 22	Growth (%) (FY23-FY22)	FY 23	FY 22	Growth (%) (FY23-FY22)
Power	8.631	7.60	13.64	87.057	74.64	16.64
CPP	0.32	0.16	105.06	2.81	1.48	89.86
Steel	0.59	0.42	41.01	5.62	4.45	26.44
Cement	0.06	0.07	-12.86	1.02	0.74	36.74
Sponge Iron						
Others	1.008	0.173	483	7.59	0.22	3364
Total	10.61	8.41	26.14	104.09	81.53	27.68

Top 37 Mines Production during Feb'2023 (provisional)

Sr. No	Subsidiary	Mines	Annual Target (MT)	Prod. Upto Jan'23 (MT)	Prod. during Feb'23 (MT)	Target upto Feb'23 (MT)	Prod. Upto Feb'23 (MT)	Achievement
1	ECL	Rajmahal	16	3.79	0.63	13.60	4.43	32.55%
2	ECL	Sonepur Bazari	11	9.61	1.12	9.63	10.73	111.45%
3	CCL	Amrapali	21	13.07	1.96	18.56	15.03	81.00%
4	CCL	Magadh	14	11.35	1.65	12.37	13.00	105.07%
5	CCL	Ashoka	9	8.63	0.83	7.95	9.46	118.98%
6	CCL	AKK	5	4.75	0.63	4.42	5.37	121.62%
7	NCL	Jayant	24	21.51	2.39	21.69	23.91	110.25%
8	NCL	Dudhichua	22	18.32	2.22	19.88	20.54	103.34%
9	NCL	Nigahi	21	19.32	1.57	18.97	20.88	110.05%
10	NCL	Amlohri	14	11.82	1.54	12.65	13.37	105.66%
11	NCL	Khadia	14	12.83	1.06	12.65	13.89	109.82%
12	NCL	Bina	10.5	9.21	0.63	9.49	9.84	103.74%
13	NCL	Krishnashila	7	6.45	0.56	6.32	7.01	110.82%
14	NCL	Block-B	5.47	4.89	0.31	4.94	5.20	105.14%
15	WCL	Penganga	6.3	4.12	0.69	5.34	4.81	90.08%
16	WCL	Mungoli	4.38	2.53	0.62	3.71	3.15	84.97%
17	WCL	Niljai Deep	4	2.67	0.74	3.39	3.41	100.53%
18	WCL	Makardhokra I	4	3.47	0.35	3.39	3.82	112.65%
19	SECL	Gevra	52	40.88	5.32	45.98	46.19	100.46%
20	SECL	Kusmunda	45	30.38	5.84	39.79	36.22	91.04%
21	SECL	Dipka	38	22.03	4.23	33.65	26.26	78.04%
22	SECL	Manikpur	4.90	4.74	0.35	4.34	5.09	117.27%
23	SECL	Gare Pelma IV/2&3	4.00	1.51	0.24	3.54	1.75	49.36%
24	MCL	Bhubaneswari	28	24.87	2.52	24.99	27.39	109.61%
25	MCL	Lakhanpur	21	19.58	1.53	18.78	21.11	112.42%
26	MCL	Kulda	18.5	17.85	1.54	16.56	19.39	117.05%
27	MCL	Garjanbahal	15.16	13.62	1.55	13.45	15.17	112.81%
28	MCL	Ananta	14	13.27	1.67	12.42	14.95	120.31%
29	MCL	Lingaraj	14	13.45	1.39	12.42	14.84	119.46%
30	MCL	Bharatpur	10	7.15	1.02	8.87	8.17	92.12%
31	MCL	Kaniha	10	10.02	0.97	8.87	10.99	123.90%
32	MCL	Hingula	10	9.49	1.35	8.87	10.84	122.20%
33	MCL	Jagannath	7.5	5.95	0.75	6.65	6.71	100.79%
34	MCL	Belpahar	7.5	4.63	1.33	6.65	5.96	89.57%
35	MCL	Balram	6.5	6.39	0.75	5.77	7.14	123.82%
36	MCL	Samaleswari	5	5.21	0.52	4.44	5.73	129.25%
37	MCL	Lajkura	4.5	4.01	0.25	3.99	4.26	106.76%
Total			528.21	423.39	52.64	468.99	476.02	101.50%

Particulars	No. of Mines
Mines produced more than 100%	28
Mines produced more than 80% , but less than 100%	6
Mines produced more than 50% , but less than 80%	1
Mines produced less than 50%	2

Top 37 OBR during Feb'2023 (provisional)

Sr. No	Subsidiary	Mines	Annual OBR Target (M.Cum)	OBR upto Jan'23 (M.Cum)	OBR during Feb'23 (M.Cum)	Target upto Feb'23 (M.Cum)	OBR upto Feb'23 (M.Cum)	Achievement
1	ECL	Rajmahal	24.1	10.85	1.44	22.50	12.29	54.61%
2	ECL	Sonepur Bazari	60.7	62.89	6.96	53.05	69.84	131.66%
3	CCL	Amrapali	24	16.85	1.99	21.21	18.84	88.84%
4	CCL	Magadh	18	11.86	1.28	15.91	13.14	82.62%
5	CCL	Ashoka	12	6.81	0.87	10.60	7.68	72.40%
6	CCL	AKK	8	6.86	0.43	7.07	7.29	103.15%
7	NCL	Jayant	53	56.57	6.21	47.91	62.78	131.04%
8	NCL	Dudhichua	72	58.17	6.71	65.06	64.88	99.73%
9	NCL	Nigahi	80	72.44	8.58	72.26	81.02	112.12%
10	NCL	Amlohri	59.5	55.57	6.05	53.92	61.62	114.27%
11	NCL	Khadia	51	45.28	5.40	45.92	50.68	110.36%
12	NCL	Bina	40.8	44.25	4.40	36.87	48.65	131.96%
13	NCL	Krishnashila	18.5	16.34	1.51	16.72	17.86	106.81%
14	NCL	Block-B	15	14.96	1.53	13.52	16.49	121.97%
15	WCL	Penganga	21	13.39	2.62	18.67	16.01	85.74%
16	WCL	Mungoli	22	14.84	2.49	19.59	17.33	88.44%
17	WCL	Niljai Deep	35.2	23.22	2.77	31.18	25.99	83.33%
18	WCL	Makardhokra I	18	16.21	1.43	15.93	17.64	110.76%
19	SECL	Gevra	68	56.90	6.23	61.07	63.13	103.38%
20	SECL	Kusmunda	57	44.11	3.82	51.19	47.94	93.64%
21	SECL	Dipka	39	22.83	3.68	35.03	26.51	75.68%
22	SECL	Manikpur	12	11.45	1.42	10.78	12.88	119.48%
23	SECL	Gare Pelma IV/2&3	10	3.16	0.55	8.98	3.70	41.23%
24	MCL	Bhubaneswari	16	15.25	3.07	14.51	18.32	126.22%
25	MCL	Lakhanpur	40	42.67	6.53	36.28	49.20	135.61%
26	MCL	Kulda	15.5	10.91	0.97	14.06	11.88	84.52%
27	MCL	Garjanbahal	11	12.47	1.83	9.98	14.31	143.39%
28	MCL	Ananta	24.5	26.80	3.05	22.50	29.85	132.64%
29	MCL	Lingaraj	12	13.13	0.71	10.88	13.85	127.22%
30	MCL	Bharatpur	10	10.27	1.18	9.07	11.45	126.28%
31	MCL	Kaniha	7	6.12	0.73	6.35	6.85	107.92%
32	MCL	Hingula	13	13.61	1.50	12.07	15.11	125.22%
33	MCL	Jagannath	7	6.93	0.86	6.35	7.79	122.72%
34	MCL	Belpahar	10	5.02	0.85	9.07	5.87	64.74%
35	MCL	Balram	14.5	12.05	1.12	13.15	13.16	100.10%
36	MCL	Samaleswari	12	10.76	1.19	10.88	11.95	109.78%
37	MCL	Lajkura	10	9.68	1.14	9.07	10.82	119.24%
Total			1021.30	881.48	103.11	919.16	984.59	107.12%

Particulars	
Mines produced more than 100%	24
Mines produced more than 80% , but less than 100%	8
Mines produced more than 50% , but less than 80%	4
Mines produced less than 50%	1

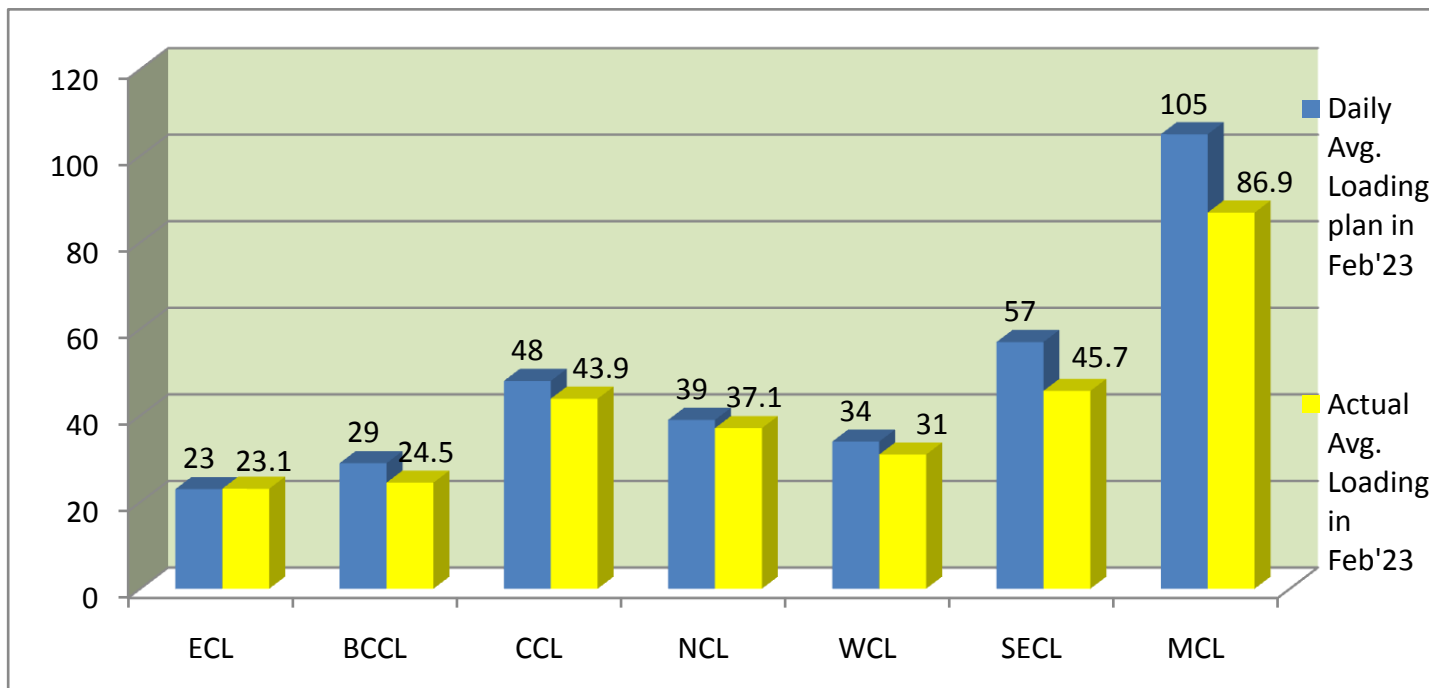
Coal Production in mines of all Subsidiaries of CIL (provisional data)
Fig. in MT

SI No	Subs	Types of Mines	No of Mines	Annual Target (MT)	During Feb'23			Upto Feb'23		
					FY 23	FY 22	Growth (%) M-O-M	FY 23	FY 22	Growth (%) Y-O-Y
1	ECL	Top 37	2	27.00	1.75	1.80	-2.78	15.16	13.22	14.69
		Others	2	4.30	0.32	0.43	-24.88	3.57	4.16	-14.20
		Top 75	4	31.30	2.07	2.23	-7.04	18.73	17.38	7.77
		Rest	73	18.70	1.29	1.31	-1.76	11.53	10.93	5.48
	Overall ECL	77	50.00	3.36	3.54	-5.08	30.26	28.31	6.89	
2	BCCL	Top 37	0	0.00	0.00	0.00		0.00	0.00	
		Others	6	18.08	1.63	1.58	3.33	17.70	15.63	13.27
		Top 75	6	18.08	1.63	1.58	3.33	17.70	15.63	13.27
		Rest	23	13.92	1.60	1.66	-3.77	14.96	10.96	36.46
	Overall BCCL	29	32.00	3.23	3.24	-0.31	32.66	26.59	22.83	
3	CCL	Top 37	4	49.00	5.06	5.22	-3.07	42.87	38.30	11.92
		Others	5	12.55	0.94	1.13	-16.42	9.56	8.69	10.06
		Top 75	9	61.55	6.00	6.35	-5.44	52.43	46.99	11.58
		Rest	27	14.45	1.69	1.42	18.70	11.74	10.64	10.32
	Overall CCL	36	76.00	7.69	7.77	-1.03	64.17	57.63	11.35	
4	MCL	Top 37	14	171.66	17.16	16.00	7.25	172.67	148.83	16.02
		Rest	4	4.34	0.09	0.14	-35.71	1.31	1.63	-19.44
	Overall MCL	18	176.00	17.25	16.14	6.88	173.95	150.60	15.50	
5	NCL	Top 37	8	117.97	10.29	10.95	-6.03	114.64	105.68	8.48
		Others	2	4.03	0.56	0.56	-0.59	4.87	4.34	12.31
		Top 75	10	122.00	10.85	11.51	-5.76	119.51	110.02	8.63
		Rest	0	0.00	0.00	0.00		0.01	0.00	
	Overall NCL	10	122.00	10.85	11.51	-5.73	119.52	109.94	8.71	
6	SECL	Top 37	5	143.90	15.97	12.15	31.44	115.51	92.65	24.67
		Others	10	21.81	1.19	1.90	-37.58	16.30	12.83	27.08
		Top 75	15	165.71	17.16	14.05	22.11	131.81	105.48	24.97
		Rest	47	16.29	1.21	1.13	7.43	12.61	16.37	-22.99
	Overall SECL	62	182.00	18.37	15.18	21.01	144.42	121.85	18.52	
7	WCL	Top 37	4	18.68	2.40	1.98	21.21	15.17	14.66	3.45
		Others	13	28.36	4.18	3.35	24.78	27.75	15.13	83.44
		Top 75	17	47.04	6.58	5.33	23.45	42.92	29.79	44.07
		Rest	36	14.96	1.43	1.54	-7.14	11.42	17.66	-35.32
	Overall WCL	53	62.00	8.01	6.87	16.59	54.34	47.45	14.52	
8	CIL	Top 37	37	528.21	52.63	48.10	9.42	476.02	413.35	15.16
		Others	38	89.13	8.82	8.95	-1.42	79.76	60.78	31.24
		Top 75	75	617.34	61.45	57.05	7.72	555.78	474.12	17.22
		Rest of mines	210	82.66	7.33	7.21	1.63	63.92	68.26	-6.36
	Overall CIL	285	700.00	68.78	64.26	7.03	619.70	542.38	14.26	

Top 75 = Top 37 + others mines including in top 75 mines
Rest of Mines = other than top 75
Overall Mines = Top 75 + rest of mines

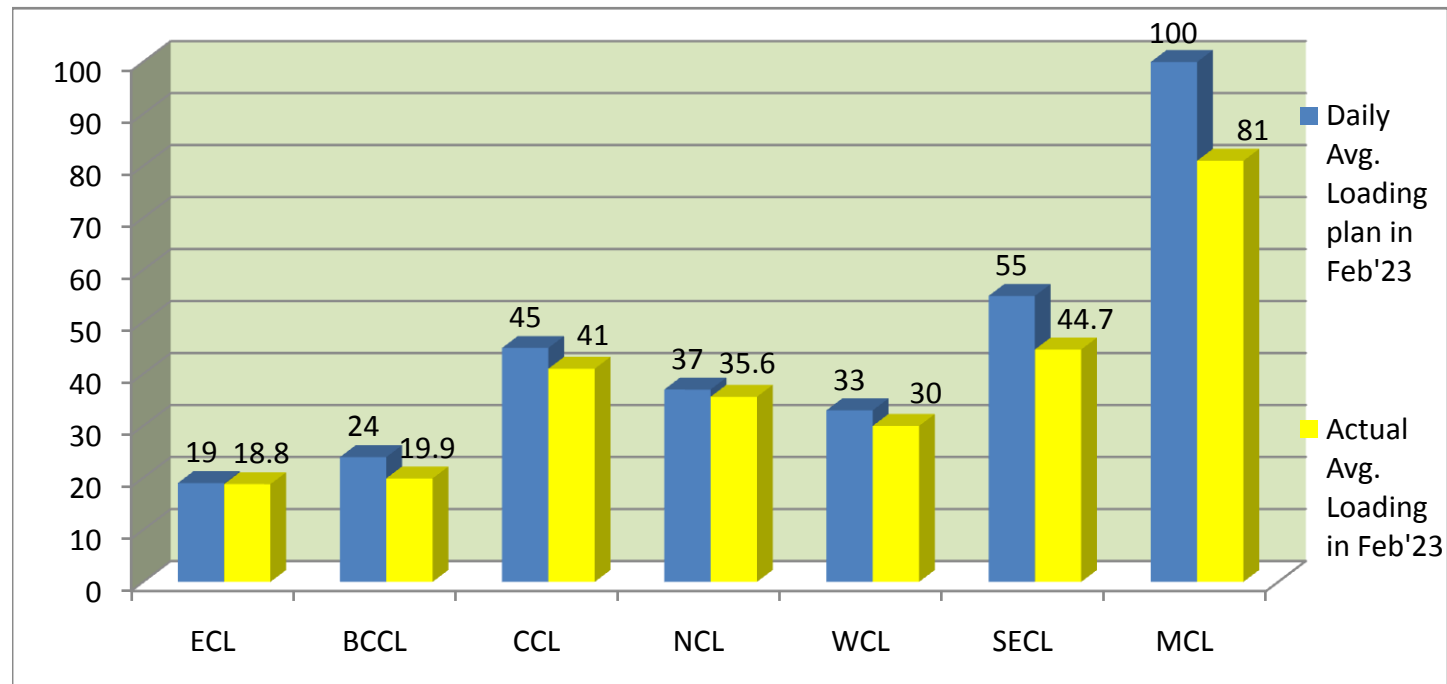
COMPANY-WISE MOVEMENT OF RAKES FOR ALL SECTORS PER DAY IN FEB'23 (Prov.)

COMPANY	Daily Avg. Loading plan in Feb'23	Actual Avg. Loading in Feb'23	Achievemnt (%)	Actual Avg. Loading in Feb'22	Growth% (Feb'22 to Feb'23)
ECL	23	23.1	100.43	22.6	2.21
BCCL	29	24.5	84.48	24.5	0.00
CCL	48	43.9	91.46	47.6	-7.77
NCL	39	37.1	95.13	35.6	4.21
WCL	34	31	91.18	29.8	4.03
SECL	57	45.7	80.18	46.6	-1.93
MCL	105	86.9	82.76	89.6	-3.01
Total	335.0	292.2	87.22	296.3	-1.38



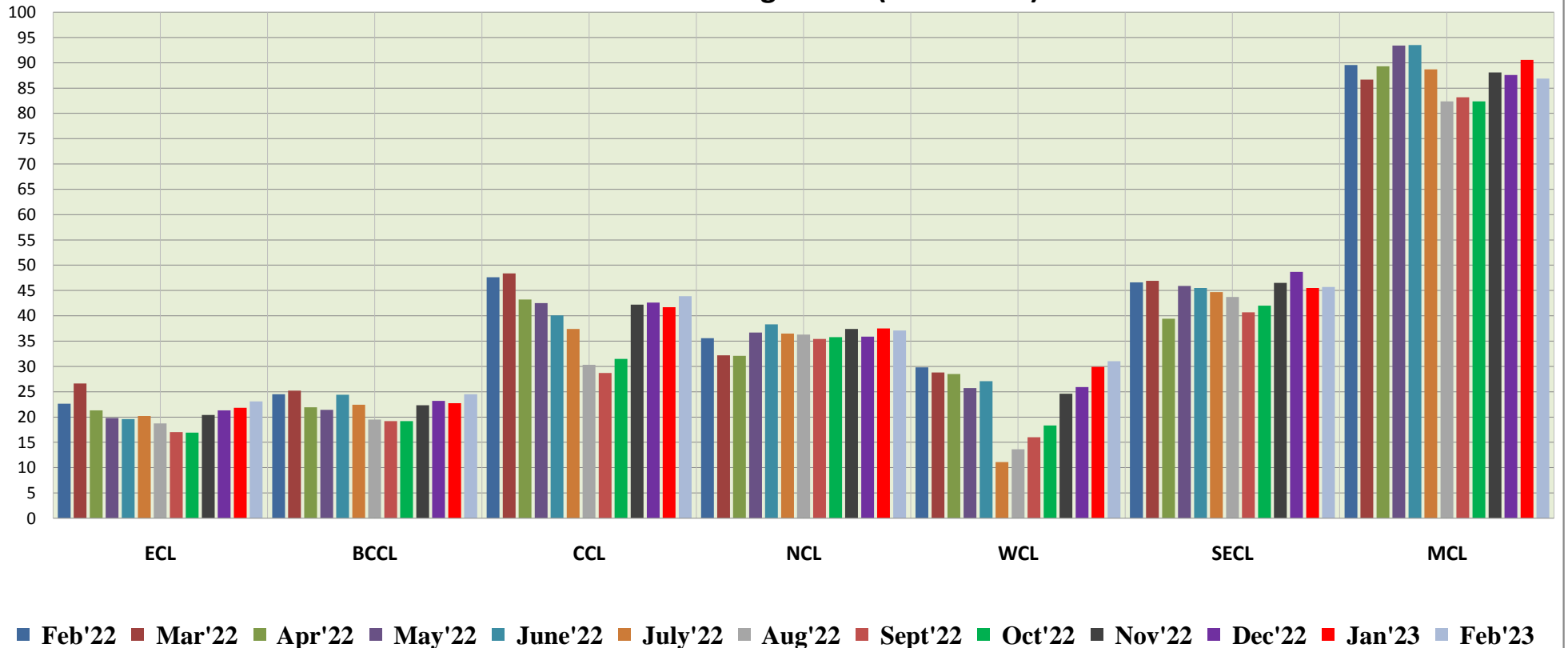
COMPANY-WISE MOVEMENT OF RAKES FOR POWER SECTOR PER DAY IN FEB'23 (Prov.)

COMPANY	Daily Avg. Loading plan in Feb'23	Actual Avg. Loading in Feb'23	Achievemnt (%)	Actual Avg. Loading in Feb'22	Growth% (Feb'22 to Feb'23)
ECL	19	18.8	98.95	17.1	9.94
BCCL	24	19.9	82.92	20.8	-4.33
CCL	45	41	91.11	45	-8.89
NCL	37	35.6	96.22	34.8	2.30
WCL	33	30	90.91	29.7	1.01
SECL	55	44.7	81.27	42.3	5.67
MCL	100	81	81.00	80.9	0.12
Total	313.00	271.00	86.58	270.60	0.15



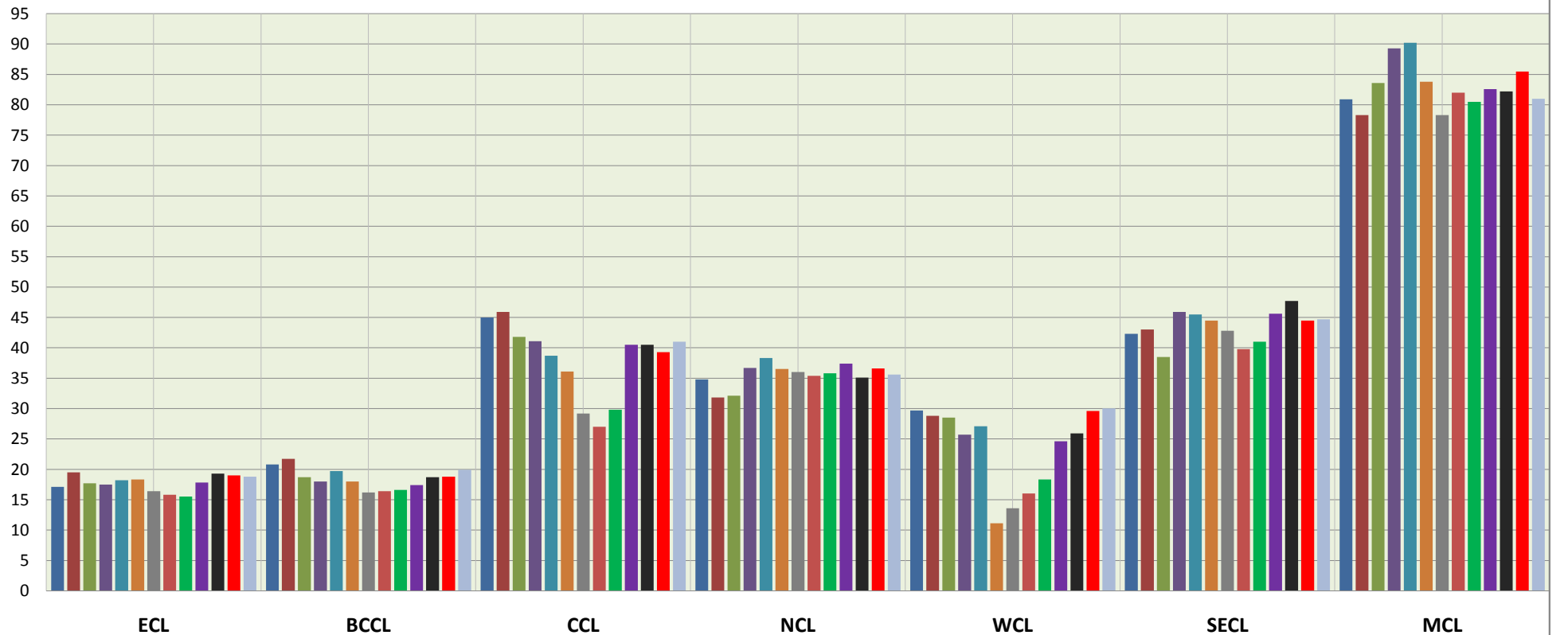
COMPANY	COMPANY-WISE MOVEMENT OF RAKES FOR ALL SECTORS PER DAY DURING FEB'22 TO FEB'23(Provisional)												
	Feb'22	Mar'22	Apr'22	May'22	June'22	July'22	Aug'22	Sept'22	Oct'22	Nov'22	Dec'22	Jan'23	Feb'23
ECL	22.6	26.6	21.3	19.8	19.6	20.2	18.7	17	16.9	20.4	21.3	21.8	23.1
BCCL	24.5	25.2	21.9	21.4	24.4	22.4	19.5	19.2	19.2	22.3	23.2	22.7	24.5
CCL	47.6	48.4	43.2	42.5	40.1	37.4	30.3	28.7	31.5	42.2	42.6	41.7	43.9
NCL	35.6	32.2	32.1	36.7	38.3	36.5	36.3	35.4	35.8	37.4	35.9	37.5	37.1
WCL	29.8	28.8	28.5	25.7	27.1	11.1	13.6	16	18.3	24.6	25.9	29.9	31
SECL	46.6	46.9	39.4	45.9	45.5	44.7	43.7	40.7	42	46.5	48.7	45.5	45.7
MCL	89.6	86.7	89.3	93.4	93.5	88.7	82.4	83.2	82.4	88.1	87.6	90.6	86.9
Total	296.3	294.8	275.7	285.5	285.3	261	244.5	240.2	246.1	281.5	285.2	289.7	292.2

Actual Rakes Loading Status (All Sectors)



COMPANY	COMPANY-WISE MOVEMENT OF RAKES FOR POWER SECTOR PER DAY DURING FEB'22 TO FEB'23(Provisional)												
	Feb'22	Mar'22	Apr'22	May'22	June'22	July'22	Aug'22	Sept'22	Oct'22	Nov'22	Dec'22	Jan'23	Feb'23
ECL	17.1	19.5	17.7	17.5	18.2	18.3	16.4	15.8	15.5	17.8	19.3	19	18.8
BCCL	20.8	21.7	18.7	18	19.7	18	16.2	16.4	16.6	17.4	18.7	18.8	19.9
CCL	45	45.9	41.8	41.1	38.7	36.1	29.2	27	29.8	40.5	40.5	39.3	41
NCL	34.8	31.8	32.1	36.7	38.3	36.5	36	35.4	35.8	37.4	35.1	36.6	35.6
WCL	29.7	28.8	28.5	25.7	27.1	11.1	13.6	16	18.3	24.6	25.9	29.6	30
SECL	42.3	43	38.5	45.9	45.5	44.5	42.8	39.8	41	45.6	47.7	44.5	44.7
MCL	80.9	78.3	83.6	89.3	90.2	83.8	78.3	82	80.5	82.6	82.2	85.5	81
Total	270.6	269	260.9	274.2	274.3	248.3	232.5	232.4	237.5	265.9	269.4	273.3	271

Actual Rake Loading Status (Power)



■ Feb'22 ■ Mar'22 ■ Apr'22 ■ May'22 ■ June'22 ■ July'22 ■ Aug'22 ■ Sept'22 ■ Oct'22 ■ Nov'22 ■ Dec'22 ■ Jan'23 ■ Feb'23