

Monthly Coal Statistics for Jan'2023(Provisional)

Coal Production

India's coal production increased by 12.94% to 89.96 MT from 79.65 MT during Jan'23 as compared to Jan'22. During Jan'23, CIL registered a growth of 11.44%, whereas SCCL and Captives/ Others registered a growth of 13.93% & 22.89% respectively.

Fig. in MT

SI No	Subs	Monthly Target	Production during Jan'23				Production upto Jan'23		
			FY 23	Achmt.(%)	FY 22	Growth (%) (FY23-FY22)	FY 23	FY 22	Growth (%) (FY23-FY22)
1	ECL	5.63	3.33	59.15	3.53	-5.67	27.10	24.77	9.41
2	BCCL	3.41	3.51	102.93	3.26	7.67	29.44	23.35	26.08
3	CCL	8.84	7.16	81.00	7.08	1.13	56.49	49.86	13.30
4	NCL	11.77	11.42	97.03	12.08	-5.46	108.67	98.44	10.39
5	WCL	7.25	7.97	109.93	6.37	25.12	46.33	40.58	14.17
6	SECL	19.15	19.44	101.51	14.84	31.00	126.05	106.68	18.16
7	MCL	19.84	19.04	95.97	17.34	9.80	156.71	134.46	16.55
8	NEC		0.03				0.15		
CIL		75.88	71.88	94.73	64.50	11.44	550.93	478.12	15.23
9	SCCL	6.68	6.87	102.84	6.03	13.93	54.10	52.54	2.97
10	Captives/Others	15.86	11.21	70.67	9.12	22.89	93.22	71.31	30.73
Grand Total		98.42	89.96	91.40	79.65	12.94	698.25	601.97	15.99

Coking Coal Production

Fig. in MT

SI No	Subs	Monthly Target	Production during Jan'23			Production upto Jan'23		
			FY 23	FY 22	Growth (%) (FY23-FY22)	FY 23	FY 22	Growth (%) (FY23-FY22)
1	ECL	0.00	0.00	0.00	-100.00	0.01	0.01	-60.74
2	BCCL	3.24	3.01	3.13	-3.58	27.31	22.14	23.34
3	CCL	2.39	2.12	1.82	16.33	14.87	11.86	25.39
5	WCL	0.01	0.01	0.01	-41.67	0.08	0.13	-40.30
6	SECL	0.03	0.02	0.02	21.05	0.20	0.18	11.54
CIL		5.67	5.16	4.98	3.70	42.46	34.33	23.70
7	Captives/Others		0.60	0.51	18.11	5.03	4.15	21.22
Grand Total		5.67	5.76	5.48	5.03	47.49	38.47	23.44

Coal Despatch

India's coal despatch increased by 8.54% to 81.91 MT from 75.47 MT during Jan'23 as compared to Jan'22. During Jan'23, CIL, SCCL and Captives/Others registered a growth of 6.07%, 14% & 21.9% by despatching 64.45 MT, 6.84 MT & 10.61 MT respectively.

Fig. in MT

SI No	Subs	Monthly Target	Despatch during Jan'23				Despatch upto Jan'23		
			FY 23	Achmt.(%)	FY 22	Growth (%) (FY23-FY22)	FY 23	FY 22	Growth (%) (FY23-FY22)
1	ECL	5.71	3.33	58.32	2.98	11.74	28.37	29.40	-3.50
2	BCCL	2.95	3.18	107.80	2.92	8.90	29.28	25.98	12.70
3	CCL	7.27	6.75	92.85	6.51	3.69	61.22	57.86	5.81
4	NCL	10.70	11.60	108.41	11.48	1.05	112.01	103.64	8.08
5	WCL	5.43	6.49	119.52	5.87	10.56	49.40	51.82	-4.67
6	SECL	17.67	15.73	89.02	14.49	8.56	131.13	127.60	2.77
7	MCL	15.66	17.35	110.79	16.50	5.15	160.73	146.09	10.02
8	NEC		0.02				0.12	0.00	
CIL		65.37	64.45	98.59	60.76	6.07	572.25	542.39	5.51
9	SCCL	6.48	6.84	105.56	6.00	14.00	54.12	54.17	-0.09
10	Captives	15.86	10.61	66.90	8.71	21.90	93.30	73.12	27.60
Grand Total		87.71	81.91	93.39	75.47	8.54	719.67	669.68	7.46

The Power utilities despatch has increased by 8.01% to 67.72 MT during Jan'23 as compared to 62.70 MT in Jan'22.

Coal Despatch to Different Sectors

Fig. in MT

Sectors	Despatch during Jan			Despatch upto Jan		
	FY 23	FY 22	Growth (%) (FY23-FY22)	FY 23	FY 22	Growth (%) (FY23-FY22)
Power	67.72	62.70	8.01	609.04	551.12	10.51
CPP	5.08	4.42	14.91	36.49	37.55	-2.81
Steel	0.94	0.59	58.92	7.72	5.25	46.97
Cement	0.77	0.82	-6.21	6.41	6.05	5.88
Sponge Iron	0.68	0.88	-22.50	6.09	6.62	-7.92
Others	6.70	6.05	10.77	53.92	63.09	-14.53
Total	81.91	75.47	8.54	719.67	669.68	7.46

Lignite Production

Fig. in MT

SI No	Company	Production during Jan'23			Production upto Jan'23		
		FY 23	FY 22	Growth (%) (FY23-FY22)	FY 23	FY 22	Growth (%) (FY23-FY22)
1	NLCIL	1.85	2.19	-15.67	19.58	18.75	4.43
2	GMDCL	0.74	0.77	-4.55	6.48	6.84	-5.19
3	GIPCL	0.36	0.47	-23.42	2.33	2.18	7.03
4	RSMML	0.15	0.17	-11.76	0.97	1.67	-41.66
5	BLMCL	0.55	0.68	-19.79	4.53	4.87	-7.08
6	GHCL	0.00	0.02		0.07	0.07	5.88
7	VS Lignite	0.10	0.06	74.14	0.81	0.82	-0.61
8	GSPL	0.16	0.24	-30.51	1.19	1.45	-17.79
Grand Total		3.91	4.60	-15.05	35.97	36.64	-1.83

Lignite Despatch

Fig. in MT

SI No	Company	Despatch during Jan'23			Despatch upto Jan'23		
		FY 23	FY 22	Growth (%) (FY23-FY22)	FY 23	FY 22	Growth (%) (FY23-FY22)
1	NLCIL	1.80	2.35	-23.50	20.58	22.34	-7.86
2	GMDCL	0.74	0.77	-4.55	6.48	6.84	-5.19
3	GIPCL	0.36	0.47	-23.42	2.33	2.18	7.03
4	RSMML	0.15	0.17	-11.76	0.97	1.67	-41.66
5	BLMCL	0.53	0.40	32.51	4.92	4.83	1.80
6	GHCL	0.01	0.01	-37.50	0.07	0.06	25.86
7	VS Lignite	0.10	0.07	53.03	0.84	0.79	7.11
8	GSPL	0.16	0.19	-15.54	1.08	1.49	-27.44
Grand Total		3.85	4.44	-13.21	37.29	40.19	-7.23

Power Generation

Fig in MU

Source-wise	Jan-23	% share	Jan-22	Dec-22	Growth(%) (Jan'23-Jan'22)	Growth(%) (Jan'23-Dec'22)
Coal	104407	76.22	88642	98443	17.79	6.06
Lignite	2854	2.08	2340	2227	21.97	28.15
Hydro	8578	6.26	7849	9132	9.29	-6.07
Nuclear	4106	3.00	3665	3758	12.03	9.26
Gas, Naptha & Diesel	1810	1.32	1887	1697	-4.08	6.66
RES (Wind, Solar, Biomass & Others)	15218	11.11	11374	13279	33.80	14.60
Total	136973	100.00	115757	128536	18.33	6.56

Coal based power generation has registered a growth of 17.79% in Jan'23 as compared to Jan'22 and overall power generation in Jan'23 has been 18.33% higher than the power generated in Jan'22. Similarly, total power generation has advanced in Jan'23 to 136973 MU from 128536 MU in Dec'22 and registered a growth of 6.56%.

Electricity Prices and Clearing Volume in Indian Energy Exchange

Item	Type	During the period of Jan		
		FY 23	FY 22	Growth (%)
Energy Prices (INR per MWh)	RTC	6178.96	3385.16	82.53
	Evening	7765.25	4265.07	82.07
	Day	6429.46	3411.06	88.49
	Night	2964.97	1975.61	50.08
	Morning	8985.65	4486.68	100.27
Market Clearing Volume (BU)	RTC	6650.49	7195.01	-7.57
	Evening	6236.19	6831.29	-8.71
	Day	6758.22	7329.73	-7.80
	Night	5951.45	5813.37	2.38
	Morning	8306.72	9922.7	-16.29
	Total	4947962.33	5353086.05	-7.57

Despatch of Coal By CIL

Fig. in MT

Sectors	Coal Despatch during Jan'23			Coal Despatch upto Jan'23		
	FY 23	FY 22	Growth (%) (FY23-FY22)	FY 23	FY 22	Growth (%) (FY23-FY22)
Power	53.52	50.10	6.82	486.15	439.43	10.63
CPP	4.31	3.86	11.66	31.59	33.59	-5.95
Steel	0.34	0.13	169.84	2.68	1.22	119.85
Cement	0.35	0.36	-3.31	2.82	2.89	-2.42
Sponge Iron	0.65	0.85	-23.26	5.78	6.44	-10.25
Others	5.28	5.46	-3.35	43.23	58.82	-26.51
Total	64.45	60.76	6.07	572.25	542.39	5.51

Despatch of Coal By SCCL

Fig. in MT

Sectors	Coal Despatch during Jan'23			Coal Despatch upto Jan'23		
	FY 23	FY 22	Growth (%) (FY23-FY22)	FY 23	FY 22	Growth (%) (FY23-FY22)
Power	5.595	4.74	18.11	44.64	44.65	-0.02
CPP	0.42	0.38	10.26	2.43	2.64	-7.97
Steel						
Cement	0.35	0.30	18.46	2.63	2.49	5.79
Sponge Iron	0.03	0.03	-3.03	0.31	0.18	77.27
Others	0.44	0.55	-20.11	4.12	4.23	-2.63
Total	6.84	6.00	14.00	54.12	54.17	-0.09

Coal Despatch to Different Sectors by Captive and Others

Fig. in MT

Sectors	Coal Despatch during Jan'23			Coal Despatch upto Jan'23		
	FY 23	FY 22	Growth (%) (FY23-FY22)	FY 23	FY 22	Growth (%) (FY23-FY22)
Power	8.606	7.86	9.52	78.25	67.04	16.71
CPP	0.35	0.18	93.92	2.48	1.32	87.51
Steel	0.60	0.47	29.06	5.04	4.03	24.93
Cement	0.07	0.16	-58.39	0.96	0.67	41.90
Sponge Iron						
Others	0.983	0.037	2557	6.58	0.05	14200
Total	10.61	8.71	21.90	93.30	73.12	27.60

Top 37 Mines Production during Jan'2023 (provisional)

Sr. No	Subsidiary	Mines	Annual Target (MT)	Prod. Upto Dec'22 (MT)	Prod. during Jan'23 (MT)	Target upto Jan'23 (MT)	Prod. Upto Jan'23 (MT)	Achievement
1	ECL	Rajmahal	16	3.15	0.65	11.51	3.79	32.98%
2	ECL	Sonepur Bazari	11	8.47	1.14	8.40	9.61	114.45%
3	CCL	Amrapali	21	11.44	1.64	16.35	13.07	79.97%
4	CCL	Magadh	14	9.88	1.48	10.90	11.35	104.15%
5	CCL	Ashoka	9	7.75	0.89	7.01	8.63	123.20%
6	CCL	AKK	5	4.09	0.66	3.89	4.75	121.95%
7	NCL	Jayant	24	19.09	2.43	19.59	21.51	109.79%
8	NCL	Dudhichua	22	16.24	2.07	17.96	18.32	101.98%
9	NCL	Nigahi	21	17.50	1.81	17.15	19.32	112.67%
10	NCL	Amlohri	14	10.25	1.57	11.43	11.82	103.45%
11	NCL	Khadia	14	11.67	1.16	11.43	12.83	112.27%
12	NCL	Bina	10.5	8.43	0.78	8.57	9.21	107.41%
13	NCL	Krishnashila	7	5.82	0.63	5.72	6.45	112.85%
14	NCL	Block-B	5.47	4.50	0.39	4.47	4.89	109.43%
15	WCL	Penganga	6.3	3.46	0.66	4.59	4.12	89.73%
16	WCL	Mungoli	4.38	1.87	0.66	3.19	2.53	79.44%
17	WCL	Niljai Deep	4	2.05	0.62	2.91	2.67	91.61%
18	WCL	Makardhokra I	4	3.06	0.42	2.91	3.47	119.18%
19	SECL	Gevra	52	35.36	5.51	40.80	40.88	100.19%
20	SECL	Kusmunda	45	24.79	5.59	35.14	30.38	86.46%
21	SECL	Dipka	38	17.68	4.35	29.88	22.03	73.74%
22	SECL	Manikpur	4.90	4.32	0.42	3.85	4.74	123.18%
23	SECL	Gare Pelma IV/2&3	4.00	1.22	0.29	3.14	1.51	48.04%
24	MCL	Bhubaneswari	28	22.13	2.74	22.29	24.87	111.58%
25	MCL	Lakhanpur	21	17.77	1.82	16.79	19.58	116.63%
26	MCL	Kulda	18.5	16.00	1.85	14.83	17.85	120.39%
27	MCL	Garjanbahal	15.16	11.93	1.69	11.91	13.62	114.39%
28	MCL	Ananta	14	11.49	1.78	11.00	13.27	120.71%
29	MCL	Lingaraj	14	11.96	1.49	11.00	13.45	122.33%
30	MCL	Bharatpur	10	6.03	1.12	7.85	7.15	91.02%
31	MCL	Kaniha	10	8.87	1.15	7.85	10.02	127.60%
32	MCL	Hingula	10	8.04	1.45	7.85	9.49	120.88%
33	MCL	Jagannath	7.5	5.10	0.85	5.89	5.95	101.05%
34	MCL	Belpahar	7.5	3.29	1.34	5.89	4.63	78.56%
35	MCL	Balram	6.5	5.69	0.70	5.11	6.39	125.13%
36	MCL	Samaleswari	5	4.62	0.59	3.93	5.21	132.76%
37	MCL	Lajkura	4.5	3.65	0.36	3.53	4.01	113.44%
Total			528.21	368.66	54.73	416.48	423.39	101.66%

Particulars	No. of Mines
Mines produced more than 100%	28
Mines produced more than 80% , but less than 100%	3
Mines produced more than 50% , but less than 80%	4
Mines produced less than 50%	2

Top 37 OBR during Jan'2023 (provisional)

Sr. No	Subsidiary	Mines	Annual OBR Target (M.Cum)	OBR upto Dec'22 (M.Cum)	OBR during Jan'23 (M.Cum)	Target upto Jan'23 (M.Cum)	OBR upto Jan'23 (M.Cum)	Achievement
1	ECL	Rajmahal	24.1	9.67	1.18	20.48	10.85	52.95%
2	ECL	Sonepur Bazari	60.7	55.37	7.52	47.29	62.89	132.98%
3	CCL	Amrapali	24	14.65	2.21	18.68	16.85	90.19%
4	CCL	Magadh	18	10.48	1.38	14.01	11.86	84.63%
5	CCL	Ashoka	12	5.88	0.93	9.34	6.81	72.90%
6	CCL	AKK	8	6.32	0.54	6.23	6.86	110.19%
7	NCL	Jayant	53	49.83	6.73	43.31	56.57	130.60%
8	NCL	Dudhichua	72	50.12	8.04	58.78	58.17	98.95%
9	NCL	Nigahi	80	63.32	9.12	65.28	72.44	110.98%
10	NCL	Amlohri	59.5	49.74	5.83	48.74	55.57	114.01%
11	NCL	Khadia	51	39.05	6.23	41.46	45.28	109.21%
12	NCL	Bina	40.8	39.43	4.82	33.31	44.25	132.83%
13	NCL	Krishnashila	18.5	14.75	1.59	15.11	16.34	108.19%
14	NCL	Block-B	15	13.36	1.60	12.19	14.96	122.75%
15	WCL	Penganga	21	11.18	2.21	16.46	13.39	81.34%
16	WCL	Mungoli	22	12.04	2.80	17.31	14.84	85.73%
17	WCL	Niljai Deep	35.2	20.07	3.15	27.38	23.22	84.78%
18	WCL	Makardhokra I	18	14.11	2.10	13.97	16.21	116.08%
19	SECL	Gevra	68	50.23	6.67	54.88	56.90	103.68%
20	SECL	Kusmunda	57	39.65	4.46	46.00	44.11	95.89%
21	SECL	Dipka	39	18.27	4.56	31.48	22.83	72.52%
22	SECL	Manikpur	12	10.20	1.26	9.69	11.45	118.26%
23	SECL	Gare Pelma IV/2&3	10	2.69	0.47	8.07	3.16	39.10%
24	MCL	Bhubaneswari	16	11.29	3.96	13.17	15.25	115.79%
25	MCL	Lakhanpur	40	35.57	7.09	32.92	42.67	129.61%
26	MCL	Kulda	15.5	9.88	1.03	12.76	10.91	85.54%
27	MCL	Garjanbahal	11	11.09	1.38	9.05	12.47	137.80%
28	MCL	Ananta	24.5	23.43	3.36	20.72	26.80	129.32%
29	MCL	Lingaraj	12	12.20	0.93	9.88	13.13	132.98%
30	MCL	Bharatpur	10	8.75	1.52	8.23	10.27	124.79%
31	MCL	Kaniha	7	5.47	0.66	5.76	6.12	106.27%
32	MCL	Hingula	13	11.76	1.85	11.26	13.61	120.93%
33	MCL	Jagannath	7	5.98	0.95	5.76	6.93	120.36%
34	MCL	Belpahar	10	4.08	0.95	8.23	5.02	61.03%
35	MCL	Balram	14.5	11.23	0.81	11.93	12.05	100.95%
36	MCL	Samaleswari	12	9.69	1.07	9.88	10.76	108.92%
37	MCL	Lajkura	10	8.50	1.18	8.23	9.68	117.56%
Total			1021.30	769.33	112.14	827.24	881.48	106.56%

Particulars		
Mines produced more than 100%		24
Mines produced more than 80% , but less than 100%		8
Mines produced more than 50% , but less than 80%		4
Mines produced less than 50%		1

Coal Production in mines of all Subsidiaries of CIL (provisional data)

Fig. in MT

SI No	Subs	Types of Mines	No of Mines	Annual Target (MT)	During Jan'23			Upto Jan'23		
					FY 23	FY 22	Growth (%) M-O-M	FY 23	FY 22	Growth (%) Y-O-Y
1	ECL	Top 37	2	27.00	1.78	1.75	1.71	13.41	11.42	17.45
		Others	2	4.30	0.32	0.43	-25.58	3.25	3.73	-12.97
		Top 75	4	31.30	2.10	2.18	-3.67	16.66	15.15	9.96
		Rest	73	18.70	1.23	1.35	-8.89	10.44	9.62	8.54
	Overall ECL	77	50.00	3.33	3.53	-5.67	27.10	24.77	9.41	
2	BCCL	Top 37	0	0.00	0.00	0.00		0.00	0.00	
		Others	6	18.08	1.88	1.96	-4.08	16.07	14.05	14.39
		Top 75	6	18.08	1.88	1.96	-4.08	16.07	14.05	14.39
		Rest	23	13.92	1.63	1.30	25.38	13.37	9.30	43.74
	Overall BCCL	29	32.00	3.51	3.26	7.67	29.44	23.35	26.08	
3	CCL	Top 37	4	49.00	4.66	4.69	-0.64	37.81	33.08	14.29
		Others	5	12.55	1.04	0.85	21.99	8.62	7.56	14.02
		Top 75	9	61.55	5.70	5.54	2.83	46.43	40.64	14.24
		Rest	27	14.45	1.46	1.54	-4.99	10.06	9.22	9.14
	Overall CCL	36	76.00	7.16	7.08	1.13	56.49	49.86	13.30	
4	MCL	Top 37	14	171.66	18.94	17.21	10.05	155.51	132.83	17.07
		Rest	4	4.34	0.10	0.13	-23.08	1.31	1.63	-19.44
	Overall MCL	18	176.00	19.04	17.34	9.80	156.71	134.46	16.55	
5	NCL	Top 37	8	117.97	10.84	11.54	-6.07	104.35	94.73	10.16
		Others	2	4.03	0.58	0.54	7.41	4.32	3.78	14.22
		Top 75	10	122.00	11.42	12.08	-5.46	108.67	98.51	10.31
		Rest	0	0.00	0.00	0.00		0.00	0.00	
	Overall NCL	10	122.00	11.42	12.08	-5.46	108.67	98.44	10.39	
6	SECL	Top 37	5	143.90	16.16	11.80	36.95	99.54	80.50	23.65
		Others	10	21.81	1.67	1.41	18.44	15.12	10.93	38.32
		Top 75	15	165.71	17.83	13.21	34.97	114.66	91.43	25.41
		Rest	47	16.29	1.61	1.63	-1.23	11.39	15.25	-25.30
	Overall SECL	62	182.00	19.44	14.84	31.00	126.05	106.68	18.16	
7	WCL	Top 37	4	18.68	2.35	1.92	22.40	12.77	12.68	0.68
		Others	13	28.36	3.97	1.61	146.58	23.57	11.78	100.12
		Top 75	17	47.04	6.32	3.53	79.04	36.34	24.46	48.56
		Rest	36	14.96	1.65	2.84	-41.90	9.99	16.12	-38.01
	Overall WCL	53	62.00	7.97	6.37	25.12	46.33	40.58	14.17	
8	CIL	Top 37	37	528.21	54.73	48.91	11.90	423.39	365.25	15.92
		Others	38	89.13	9.46	6.80	39.07	70.94	51.83	36.88
		Top 75	75	617.34	64.19	55.71	15.22	494.33	417.07	18.52
		Rest of mines	210	82.66	7.69	8.79	-12.48	56.60	61.07	-7.31
	Overall CIL	285	700.00	71.88	64.50	11.44	550.93	478.14	15.22	

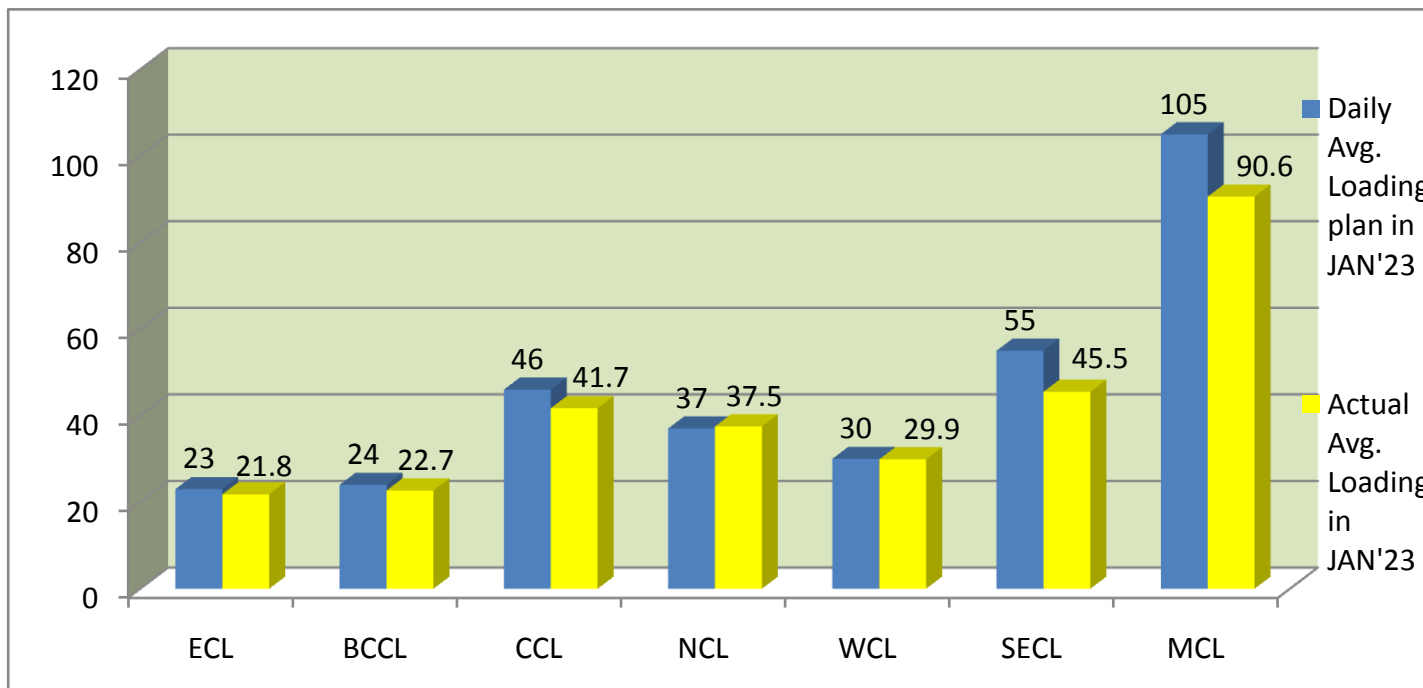
Top 75 = Top 37 + others mines including in top 75 mines

Rest of Mines = other than top 75

Overall Mines = Top 75 + rest of mines

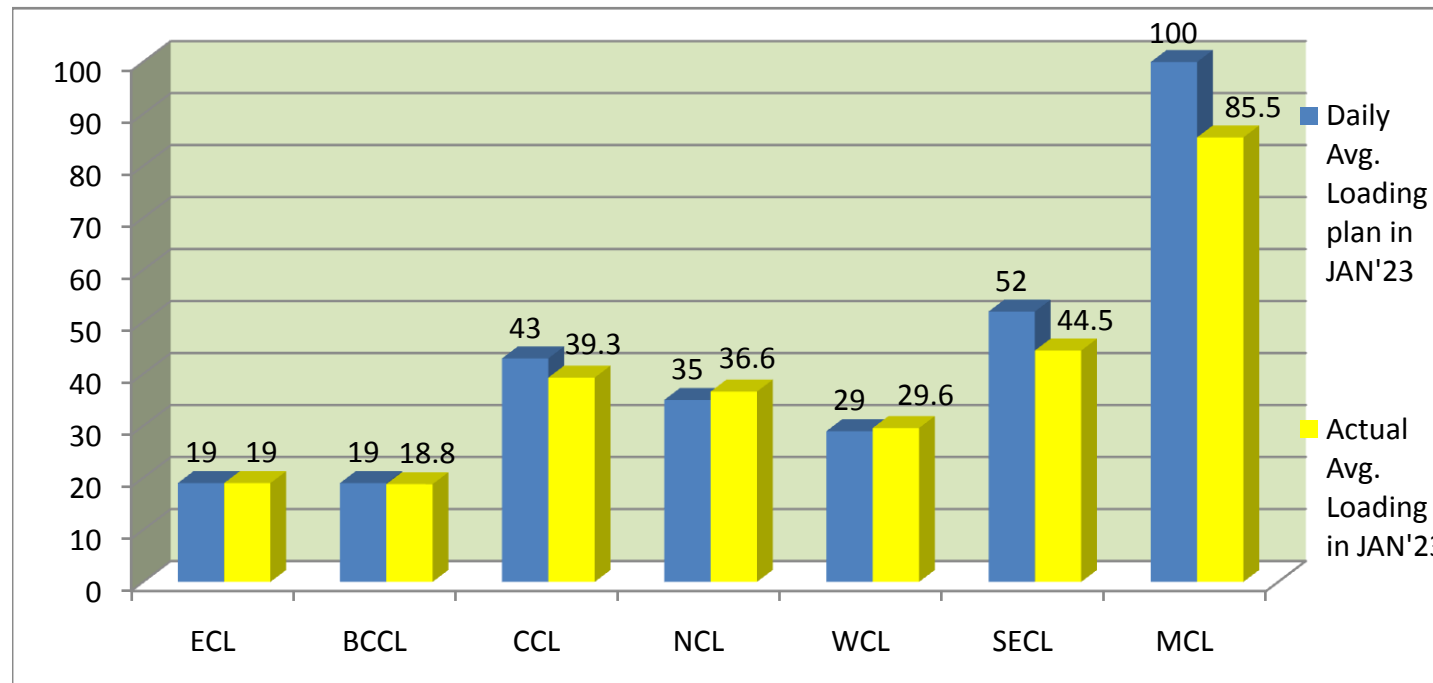
COMPANY-WISE MOVEMENT OF RAKES FOR ALL SECTORS PER DAY IN JAN'23 (Prov.)

COMPANY	Daily Avg. Loading plan in JAN'23	Actual Avg. Loading in JAN'23	Achievemnt (%)	Actual Avg. Loading in JAN'22	Growth% (JAN'22 to JAN'23)
ECL	23	21.8	94.78	19.8	10.10
BCCL	24	22.7	94.58	23.1	-1.73
CCL	46	41.7	90.65	43.5	-4.14
NCL	37	37.5	101.35	35	7.14
WCL	30	29.9	99.67	28.3	5.65
SECL	55	45.5	82.73	46.5	-2.15
MCL	105	90.6	86.29	89.2	1.57
Total	320.0	289.7	90.53	285.4	1.51



COMPANY-WISE MOVEMENT OF RAKES FOR POWER SECTOR PER DAY IN JAN'23 (Prov.)

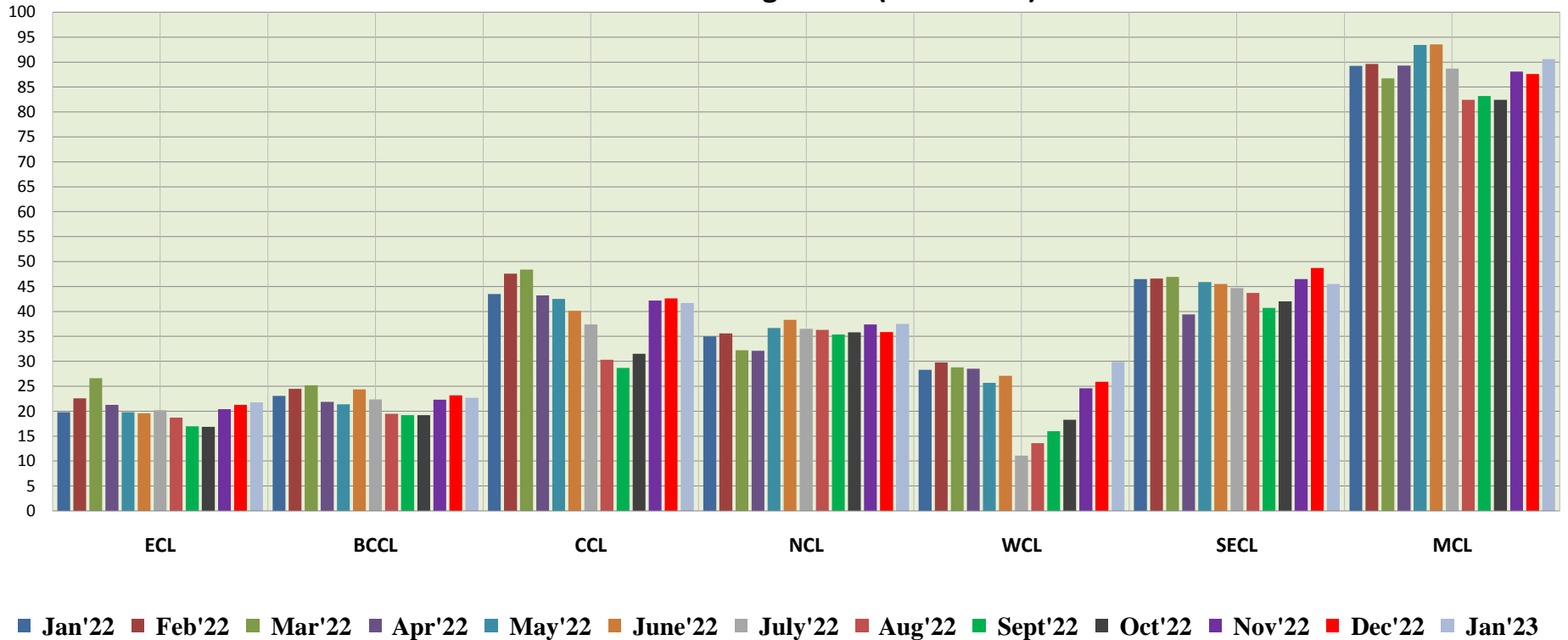
COMPANY	Daily Avg. Loading plan in JAN'23	Actual Avg. Loading in JAN'23	Achievemnt (%)	Actual Avg. Loading in JAN'22	Growth% (JAN'22 to JAN'23)
ECL	19	19	100.00	18.1	4.97
BCCL	19	18.8	98.95	18.7	0.53
CCL	43	39.3	91.40	40.5	-2.96
NCL	35	36.6	104.57	34.9	4.87
WCL	29	29.6	102.07	28.3	4.59
SECL	52	44.5	85.58	41.1	8.27
MCL	100	85.5	85.50	78	9.62
Total	297.00	273.30	92.02	259.60	5.28



COMPANY-WISE MOVEMENT OF RAKES FOR ALL SECTORS PER DAY DURING JAN'22 TO JAN'23(Provisional)

COMPANY	Jan'22	Feb'22	Mar'22	Apr'22	May'22	June'22	July'22	Aug'22	Sept'22	Oct'22	Nov'22	Dec'22	Jan'23
ECL	19.8	22.6	26.6	21.3	19.8	19.6	20.2	18.7	17	16.9	20.4	21.3	21.8
BCCL	23.1	24.5	25.2	21.9	21.4	24.4	22.4	19.5	19.2	19.2	22.3	23.2	22.7
CCL	43.5	47.6	48.4	43.2	42.5	40.1	37.4	30.3	28.7	31.5	42.2	42.6	41.7
NCL	35	35.6	32.2	32.1	36.7	38.3	36.5	36.3	35.4	35.8	37.4	35.9	37.5
WCL	28.3	29.8	28.8	28.5	25.7	27.1	11.1	13.6	16	18.3	24.6	25.9	29.9
SECL	46.5	46.6	46.9	39.4	45.9	45.5	44.7	43.7	40.7	42	46.5	48.7	45.5
MCL	89.2	89.6	86.7	89.3	93.4	93.5	88.7	82.4	83.2	82.4	88.1	87.6	90.6
Total	285.4	296.3	294.8	275.7	285.5	285.3	261	244.5	240.2	246.1	281.5	285.2	289.7

Actual Rakes Loading Status (All Sectors)



COMPANY-WISE MOVEMENT OF RAKES FOR POWER SECTOR PER DAY DURING JAN'22 TO JAN'23(Provisional)

COMPANY

	Jan'22	Feb'22	Mar'22	Apr'22	May'22	June'22	July'22	Aug'22	Sept'22	Oct'22	Nov'22	Dec'22	Jan'23
ECL	18.1	17.1	19.5	17.7	17.5	18.2	18.3	16.4	15.8	15.5	17.8	19.3	19
BCCL	18.7	20.8	21.7	18.7	18	19.7	18	16.2	16.4	16.6	17.4	18.7	18.8
CCL	40.5	45	45.9	41.8	41.1	38.7	36.1	29.2	27	29.8	40.5	40.5	39.3
NCL	34.9	34.8	31.8	32.1	36.7	38.3	36.5	36	35.4	35.8	37.4	35.1	36.6
WCL	28.3	29.7	28.8	28.5	25.7	27.1	11.1	13.6	16	18.3	24.6	25.9	29.6
SECL	41.1	42.3	43	38.5	45.9	45.5	44.5	42.8	39.8	41	45.6	47.7	44.5
MCL	78	80.9	78.3	83.6	89.3	90.2	83.8	78.3	82	80.5	82.6	82.2	85.5
Total	259.6	270.6	269	260.9	274.2	274.3	248.3	232.5	232.4	237.5	265.9	269.4	273.3

Actual Rake Loading Status (Power)

