

## Monthly Coal Statistics for Dec'2022(Provisional)

### Coal Production

India's coal production increased by 10.81% to 82.87 MT from 74.79 MT during Dec'22 as compared to Dec'21. During Dec'22, CIL registered a growth of 10.30%, whereas SCCL and Captives/ Others registered a growth of 19.12% & 9.01% respectively.

### Coal Production

*Fig. in MT*

SI No	Subs	Monthly Target	Production during Dec'22				Production upto Dec'22		
			FY 23	Achmt.(%)	FY 22	Growth (%) (FY23-FY22)	FY 23	FY 22	Growth (%) (FY23-FY22)
1	ECL	4.35	3.16	72.64	2.90	8.97	23.77	21.24	11.91
2	BCCL	2.67	3.56	133.33	2.85	24.91	25.93	20.09	29.07
3	CCL	5.95	7.20	121.01	6.41	12.32	49.33	42.78	15.31
4	NCL	10.11	11.48	113.55	11.24	2.14	97.26	86.36	12.62
5	WCL	5.77	6.61	114.56	5.81	13.77	38.36	34.21	12.13
6	SECL	15.50	16.76	108.13	14.16	18.36	106.61	91.84	16.08
7	MCL	14.15	17.63	124.59	16.85	4.63	137.67	117.12	17.55
8	NEC		0.02				0.12		
<b>CIL</b>		<b>58.50</b>	<b>66.42</b>	<b>113.54</b>	<b>60.22</b>	<b>10.30</b>	<b>479.05</b>	<b>413.63</b>	<b>15.82</b>
9	SCCL	6.68	6.73	100.75	5.65	19.12	47.22	46.52	1.51
10	Captives/Others	13.49	9.72	72.07	8.92	9.01	81.02	62.19	30.28
<b>Grand Total</b>		<b>78.67</b>	<b>82.87</b>	<b>105.34</b>	<b>74.79</b>	<b>10.81</b>	<b>607.29</b>	<b>522.34</b>	<b>16.26</b>

### Coking Coal Production

*Fig. in MT*

SI No	Subs	Monthly Target	Production during Dec'22			Production upto Dec'22		
			FY 23	FY 22	Growth (%) (FY23-FY22)	FY 23	FY 22	Growth (%) (FY23-FY22)
1	ECL	0.00	0.00	0.00	100.00	0.01	0.01	-60.45
2	BCCL	2.49	3.33	2.76	20.86	24.29	19.01	27.77
3	CCL	1.62	1.87	1.51	23.99	12.75	10.04	27.03
5	WCL	0.01	0.01	0.01	-35.71	0.07	0.12	-40.16
6	SECL	0.02	0.02	0.02	10.53	0.18	0.16	11.04
<b>CIL</b>		<b>4.14</b>	<b>5.23</b>	<b>4.30</b>	<b>21.73</b>	<b>37.30</b>	<b>29.35</b>	<b>27.10</b>
7	Captives/Others		0.60	0.49	23.09	4.45	3.63	22.38
<b>Grand Total</b>		<b>4.14</b>	<b>5.83</b>	<b>4.78</b>	<b>21.87</b>	<b>41.75</b>	<b>32.98</b>	<b>26.58</b>

### Coal Despatch

India's coal despatch increased by 5.28% to 78.91 MT from 74.95 MT during Dec'22 as compared to Dec'21. During Dec'22, CIL, SCCL and Captives/Others registered a growth of 3.57%, 17.89% & 8.85% by despatching 62.72 MT, 6.72 MT & 9.46 MT respectively.

### Coal Despatch

Fig. in MT

SI No	Subs	Monthly Target	Despatch during Dec'22				Despatch upto Dec'22		
			FY 23	Achmt.(%)	FY 22	Growth (%) (FY23-FY22)	FY 23	FY 22	Growth (%) (FY23-FY22)
1	ECL	4.80	3.08	64.17	2.82	9.22	25.05	26.42	-5.19
2	BCCL	2.79	3.24	116.13	2.72	19.12	26.10	23.06	13.18
3	CCL	6.98	6.75	96.70	6.15	9.76	54.44	51.35	6.02
4	NCL	10.23	11.45	111.93	11.70	-2.14	100.41	92.16	8.95
5	WCL	5.74	5.88	102.44	6.08	-3.29	42.91	45.95	-6.62
6	SECL	16.74	15.57	93.01	14.37	8.35	115.41	113.11	2.03
7	MCL	14.88	16.74	112.50	16.72	0.12	143.38	129.59	10.64
8	NEC		0.02				0.09		
<b>CIL</b>		<b>62.16</b>	<b>62.72</b>	<b>100.90</b>	<b>60.56</b>	<b>3.57</b>	<b>507.80</b>	<b>481.64</b>	<b>5.43</b>
9	SCCL	<b>6.48</b>	6.72	<b>103.70</b>	5.70	<b>17.89</b>	47.28	48.17	-1.85
10	Captives	<b>13.49</b>	9.46	<b>70.15</b>	8.69	<b>8.85</b>	81.90	64.41	<b>27.16</b>
<b>Grand Total</b>		<b>82.13</b>	<b>78.91</b>	<b>96.09</b>	<b>74.95</b>	<b>5.28</b>	<b>636.98</b>	<b>594.22</b>	<b>7.20</b>

The Power utilities despatch has increased by 4.26% to 65.65 MT during Dec'22 as compared to 62.97 MT in Dec'21.

### Coal Despatch to Different Sectors

Fig. in MT

Sectors	Despatch during Dec			Despatch upto Dec		
	FY 23	FY 22	Growth (%) (FY23-FY22)	FY 23	FY 22	Growth (%) (FY23-FY22)
Power	65.65	62.97	4.26	541.03	488.42	10.77
CPP	4.79	2.79	71.87	31.00	33.13	-6.41
Steel	0.90	0.64	41.47	6.77	4.66	45.46
Cement	0.70	0.65	7.04	5.52	5.23	5.45
Sponge Iron	0.63	0.76	-17.37	5.40	5.74	-5.86
Others	6.23	7.14	-12.70	47.27	57.05	-17.15
<b>Total</b>	<b>78.91</b>	<b>74.95</b>	<b>5.28</b>	<b>636.98</b>	<b>594.22</b>	<b>7.20</b>

## Lignite Production

Fig. in MT

SI No	Company	Production during Dec'22			Production upto Dec'22		
		FY 23	FY 22	Growth (%) (FY23-FY22)	FY 23	FY 22	Growth (%) (FY23-FY22)
1	NLCIL	1.55	1.75	-11.58	17.74	16.56	7.09
2	GMDCL	0.63	0.84	-24.94	5.64	6.07	-6.97
3	GIPCL	0.37	0.41	-9.22	1.97	1.70	15.50
4	RSMML	0.09	0.17	-47.67	0.82	1.50	-45.05
5	BLMCL	0.48	0.40	19.25	3.98	4.19	-5.01
6	GHCL	0.02	0.00		0.07	0.05	47.92
7	VS Lignite	0.12	0.09	29.03	0.71	0.76	-6.33
8	GSPL	0.11	0.22	-49.77	1.03	1.21	-15.32
<b>Grand Total</b>		<b>3.37</b>	<b>3.89</b>	<b>-13.36</b>	<b>31.96</b>	<b>32.04</b>	<b>-0.25</b>

## Lignite Despatch

Fig. in MT

SI No	Company	Despatch during Dec'22			Despatch upto Dec'22		
		FY 23	FY 22	Growth (%) (FY23-FY22)	FY 23	FY 22	Growth (%) (FY23-FY22)
1	NLCIL	1.38	2.30	-39.99	18.78	19.99	-6.02
2	GMDCL	0.63	0.84	-24.94	5.64	6.07	-6.97
3	GIPCL	0.37	0.41	-9.22	1.97	1.70	15.50
4	RSMML	0.09	0.17	-47.67	0.82	1.50	-45.05
5	BLMCL	0.47	0.44	6.61	4.39	4.43	-0.99
6	GHCL	0.01	0.01	0.00	0.07	0.05	36.00
7	VS Lignite	0.10	0.10	6.25	0.74	0.72	2.91
8	GSPL	0.11	0.22	-49.54	0.92	1.30	-29.21
<b>Grand Total</b>		<b>3.16</b>	<b>4.48</b>	<b>-29.48</b>	<b>33.33</b>	<b>35.75</b>	<b>-6.77</b>

**Power Generation**

*Fig in MU*

Source-wise	Dec-22	% share	Dec-21	Nov-22	Growth(%) (Dec'22-Dec'21)	Growth(%) (Dec'22-Nov'22)
Coal	98443	76.59	85579	87687	15.03	12.27
Lignite	2227	1.73	2272	2544	-1.98	-12.46
Hydro	9132	7.10	8620	10691	5.94	-14.58
Nuclear	3758	2.92	3987	3829	-5.74	-1.85
Gas, Naptha & Diesel	1697	1.32	1905	1548	-10.92	9.63
RES (Wind, Solar, Biomass & Others)	13279	10.33	10731	11730	23.74	13.21
<b>Total</b>	<b>128536</b>	<b>100.00</b>	<b>113094</b>	<b>118029</b>	<b>13.65</b>	<b>8.90</b>

Coal based power generation has registered a growth of 15.03% in Dec'22 as compared to Dec'21 and overall power generation in Dec'22 has been 13.65% higher than the power generated in Dec'21. Similarly, total power generation has advanced in Dec'22 to 128536 MU from 118029 MU in Nov'22 and registered a growth of 8.90%.

**Electricity Prices and Clearing Volume in Indian Energy Exchange**

Item	Type	During the period of Dec		
		FY 23	FY 22	Growth (%)
<b>Energy Prices (INR per MWh)</b>	RTC	5237.33	3540.72	47.92
	Evening	6344.68	4692.06	35.22
	Day	5378.84	3396.69	58.36
	Night	2873.71	2050.77	40.13
	Morning	7465	4673.2	59.74
<b>Market Clearing Volume (BU)</b>	RTC	6690.1	7289.34	-8.22
	Evening	6653.71	7111.35	-6.44
	Day	7561.53	7668.63	-1.40
	Night	5215.11	5590.7	-6.72
	Morning	7800.93	9865.24	-20.93
	<b>Total</b>		<b>4977436.33</b>	<b>5423272.7</b>

**Despatch of Coal By CIL**

*Fig. in MT*

Sectors	Coal Despatch during Dec'22			Coal Despatch upto Dec'22		
	FY 23	FY 22	Growth (%) (FY23-FY22)	FY 23	FY 22	Growth (%) (FY23-FY22)
Power	52.08	50.42	3.30	432.68	389.33	11.14
CPP	4.03	2.36	70.76	26.87	29.73	-9.62
Steel	0.30	0.19	58.73	2.33	1.09	113.37
Cement	0.29	0.26	11.54	2.35	2.53	-7.11
Sponge Iron	0.60	0.73	-17.81	5.12	5.59	-8.46
Others	5.42	6.60	-17.92	38.45	53.37	-27.95
<b>Total</b>	<b>62.72</b>	<b>60.56</b>	<b>3.57</b>	<b>507.80</b>	<b>481.64</b>	<b>5.43</b>

**Despatch of Coal By SCCL**

*Fig. in MT*

Sectors	Coal Despatch during Dec'22			Coal Despatch upto Dec'22		
	FY 23	FY 22	Growth (%) (FY23-FY22)	FY 23	FY 22	Growth (%) (FY23-FY22)
Power	5.411	4.62	17.22	39.042	39.91	-2.17
CPP	0.44	0.25	77.20	2.01	2.26	-11.04
Steel						
Cement	0.34	0.27	28.30	2.28	2.19	4.07
Sponge Iron	0.03	0.03	-6.67	0.28	0.14	95.80
Others	0.50	0.54	-6.52	3.67	3.67	-0.08
<b>Total</b>	<b>6.72</b>	<b>5.70</b>	<b>18.01</b>	<b>47.28</b>	<b>48.17</b>	<b>-1.85</b>

**Coal Despatch to Different Sectors by Captive and Others**

*Fig. in MT*

Sectors	Coal Despatch during Dec'22			Coal Despatch upto Dec'22		
	FY 23	FY 22	Growth (%) (FY23-FY22)	FY 23	FY 22	Growth (%) (FY23-FY22)
Power	8.16	7.94	2.84	69.304	59.19	17.10
CPP	0.32	0.18	79.10	2.13	1.14	86.49
Steel	0.60	0.45	34.22	4.44	3.56	24.64
Cement	0.07	0.13	-46.09	0.89	0.51	73.44
Sponge Iron						
Others	0.312	0.001	31100	5.14	0.01	57067
<b>Total</b>	<b>9.46</b>	<b>8.69</b>	<b>8.87</b>	<b>81.90</b>	<b>64.41</b>	<b>27.16</b>

**Top 37 Mines Production during Dec'2022 (provisional)**

Sr. No	Subsidiary	Mines	Annual Target (MT)	Prod. Upto Nov'22 (MT)	Prod. during Dec'22 (MT)	Target upto Dec'22 (MT)	Prod. Upto Dec'22 (MT)	Achievement
1	ECL	Rajmahal	16	2.68	0.47	9.31	3.15	33.82%
2	ECL	Sonepur Bazari	11	7.29	1.19	7.26	8.47	116.66%
3	CCL	Amrapali	21	9.69	1.75	13.91	11.44	82.25%
4	CCL	Magadh	14	8.44	1.43	9.27	9.88	106.54%
5	CCL	Ashoka	9	6.73	1.02	5.96	7.75	130.00%
6	CCL	AKK	5	3.53	0.55	3.31	4.09	123.48%
7	NCL	Jayant	24	16.73	2.35	17.28	19.09	110.46%
8	NCL	Dudhichua	22	14.18	2.06	15.84	16.24	102.55%
9	NCL	Nigahi	21	15.57	1.94	15.12	17.50	115.77%
10	NCL	Amlohri	14	8.70	1.55	10.08	10.25	101.71%
11	NCL	Khadia	14	10.49	1.18	10.08	11.67	115.79%
12	NCL	Bina	10.5	7.61	0.82	7.56	8.43	111.54%
13	NCL	Krishnashila	7	5.14	0.68	5.04	5.82	115.40%
14	NCL	Block-B	5.47	4.07	0.43	3.94	4.50	114.26%
15	WCL	Penganga	6.3	3.13	0.33	3.84	3.46	89.90%
16	WCL	Mungoli	4.38	1.57	0.30	2.67	1.87	70.14%
17	WCL	Niljai Deep	4	1.43	0.62	2.44	2.05	83.89%
18	WCL	Makardhokra I	4	2.62	0.44	2.44	3.06	125.21%
19	SECL	Gevra	52	30.24	5.12	35.30	35.36	100.18%
20	SECL	Kusmunda	45	20.72	4.07	30.41	24.79	81.53%
21	SECL	Dipka	38	14.15	3.53	25.89	17.68	68.29%
22	SECL	Manikpur	4.90	3.84	0.48	3.33	4.32	129.60%
23	SECL	Gare Pelma IV/2&3	4.00	0.96	0.25	2.72	1.22	44.77%
24	MCL	Bhubaneswari	28	19.75	2.38	19.28	22.13	114.77%
25	MCL	Lakhanpur	21	15.87	1.90	14.57	17.77	121.93%
26	MCL	Kulda	18.5	14.00	1.99	12.89	16.00	124.11%
27	MCL	Garjanbahal	15.16	10.40	1.54	10.20	11.93	117.02%
28	MCL	Ananta	14	9.85	1.64	9.42	11.49	122.01%
29	MCL	Lingaraj	14	10.54	1.42	9.42	11.96	126.96%
30	MCL	Bharatpur	10	5.18	0.85	6.73	6.03	89.67%
31	MCL	Kaniha	10	7.83	1.04	6.73	8.87	131.82%
32	MCL	Hingula	10	6.83	1.21	6.73	8.04	119.55%
33	MCL	Jagannath	7.5	4.37	0.73	5.05	5.10	101.15%
34	MCL	Belpahar	7.5	2.05	1.24	5.05	3.29	65.20%
35	MCL	Balram	6.5	5.02	0.67	4.37	5.69	130.13%
36	MCL	Samaleswari	5	4.06	0.55	3.36	4.62	137.32%
37	MCL	Lajkura	4.5	3.27	0.37	3.03	3.65	120.56%
<b>Total</b>			<b>528.21</b>	<b>318.55</b>	<b>50.10</b>	<b>359.82</b>	<b>368.66</b>	<b>102.46%</b>

Particulars	No. of Mines
Mines produced more than 100%	28
Mines produced more than 80% , but less than 100%	4
Mines produced more than 50% , but less than 80%	3
Mines produced less than 50%	2

**Top 37 OBR during Dec'2022 (provisional)**

Sr. No	Subsidiary	Mines	Annual OBR Target (M.Cum)	OBR upto Nov'22 (M.Cum)	OBR during Dec'22 (M.Cum)	Target upto Dec'22 (M.Cum)	OBR upto Dec'22 (M.Cum)	Achievement
1	ECL	Rajmahal	24.1	8.46	1.21	18.12	9.67	53.38%
2	ECL	Sonepur Bazari	60.7	48.16	7.21	41.34	55.37	133.94%
3	CCL	Amrapali	24	12.49	2.16	15.89	14.65	92.17%
4	CCL	Magadh	18	9.07	1.41	11.92	10.48	87.93%
5	CCL	Ashoka	12	5.06	0.82	7.95	5.88	73.95%
6	CCL	AKK	8	5.69	0.63	5.30	6.32	119.29%
7	NCL	Jayant	53	43.40	6.44	38.22	49.83	130.39%
8	NCL	Dudhichua	72	43.49	6.63	51.84	50.12	96.69%
9	NCL	Nigahi	80	54.96	8.36	57.54	63.32	110.05%
10	NCL	Amlohri	59.5	43.98	5.75	43.00	49.74	115.66%
11	NCL	Khadia	51	33.37	5.68	36.52	39.05	106.93%
12	NCL	Bina	40.8	34.49	4.94	29.38	39.43	134.24%
13	NCL	Krishnashila	18.5	13.33	1.43	13.32	14.75	110.72%
14	NCL	Block-B	15	11.77	1.60	10.71	13.36	124.72%
15	WCL	Penganga	21	9.37	1.81	14.07	11.18	79.45%
16	WCL	Mungoli	22	8.96	3.08	14.83	12.04	81.17%
17	WCL	Niljai Deep	35.2	17.13	2.93	23.29	20.07	86.14%
18	WCL	Makardhokra I	18	11.76	2.35	11.86	14.11	118.96%
19	SECL	Gevra	68	44.03	6.20	48.08	50.23	104.47%
20	SECL	Kusmunda	57	33.65	6.00	40.30	39.65	98.38%
21	SECL	Dipka	39	14.19	4.08	27.58	18.27	66.24%
22	SECL	Manikpur	12	8.78	1.42	8.49	10.20	120.16%
23	SECL	Gare Pelma IV/2&3	10	2.27	0.42	7.07	2.69	38.03%
24	MCL	Bhubaneswari	16	8.00	3.29	11.68	11.29	96.67%
25	MCL	Lakhanpur	40	28.55	7.02	29.20	35.57	121.83%
26	MCL	Kulda	15.5	8.84	1.04	11.32	9.88	87.31%
27	MCL	Garjanbahal	11	9.31	1.79	8.03	11.09	138.13%
28	MCL	Ananta	24.5	20.21	3.22	18.72	23.43	125.16%
29	MCL	Lingaraj	12	11.17	1.03	8.76	12.20	139.29%
30	MCL	Bharatpur	10	7.25	1.51	7.30	8.75	119.89%
31	MCL	Kaniha	7	4.71	0.76	5.11	5.47	106.95%
32	MCL	Hingula	13	9.92	1.84	10.33	11.76	113.88%
33	MCL	Jagannath	7	5.10	0.88	5.11	5.98	117.11%
34	MCL	Belpahar	10	3.09	0.99	7.30	4.08	55.86%
35	MCL	Balram	14.5	9.61	1.62	10.59	11.23	106.13%
36	MCL	Samaleswari	12	8.36	1.33	8.76	9.69	110.60%
37	MCL	Lajkura	10	7.31	1.18	7.30	8.50	116.38%
<b>Total</b>			<b>1021.30</b>	<b>659.27</b>	<b>110.06</b>	<b>726.12</b>	<b>769.33</b>	<b>105.95%</b>

Particulars	
Mines produced more than 100%	24
Mines produced more than 80% , but less than 100%	7
Mines produced more than 50% , but less than 80%	5
Mines produced less than 50%	1

## Coal Production in mines of all Subsidiaries of CIL (provisional data)

Fig. in MT

SI No	Subs	Types of Mines	No of Mines	Annual Target (MT)	During Dec'22			Upto Dec'22		
					FY 23	FY 22	Growth (%) M-O-M	FY 23	FY 22	Growth (%) Y-O-Y
1	ECL	Top 37	2	27.00	1.65	1.38	19.74	11.63	9.67	20.29
		Others	2	4.30	0.35	0.37	-6.44	2.93	3.30	-11.33
		Top 75	4	31.30	2.00	1.75	14.19	14.56	12.97	12.25
		Rest	73	18.70	1.16	1.15	1.03	9.21	8.27	11.39
	<b>Overall ECL</b>	<b>77</b>	<b>50.00</b>	<b>3.16</b>	<b>2.90</b>	<b>8.97</b>	<b>23.77</b>	<b>21.24</b>	<b>11.91</b>	
2	BCCL	Top 37	0	0.00	0.00	0.00		0.00	0.00	
		Others	6	18.08	1.98	1.71	15.70	14.19	12.09	17.38
		Top 75	6	18.08	1.98	1.71	15.70	14.19	12.09	17.38
		Rest	23	13.92	1.58	1.14	38.70	11.74	8.00	46.73
	<b>Overall BCCL</b>	<b>29</b>	<b>32.00</b>	<b>3.56</b>	<b>2.85</b>	<b>24.91</b>	<b>25.93</b>	<b>20.09</b>	<b>29.07</b>	
3	CCL	Top 37	4	49.00	4.76	4.29	10.89	33.15	28.39	16.76
		Others	5	12.55	1.00	0.80	25.00	7.58	6.71	13.01
		Top 75	9	61.55	5.76	5.09	13.10	40.73	35.10	16.04
		Rest	27	14.45	1.44	1.32	9.31	8.60	7.68	11.98
	<b>Overall CCL</b>	<b>36</b>	<b>76.00</b>	<b>7.20</b>	<b>6.41</b>	<b>12.32</b>	<b>49.33</b>	<b>42.78</b>	<b>15.31</b>	
4	MCL	Top 37	14	171.66	17.54	16.72	4.88	136.57	115.62	18.12
		Rest	4	4.34	0.09	0.13	-28.68	1.21	1.50	-19.13
	<b>Overall MCL</b>	<b>18</b>	<b>176.00</b>	<b>17.63</b>	<b>16.85</b>	<b>4.63</b>	<b>137.67</b>	<b>117.12</b>	<b>17.55</b>	
5	NCL	Top 37	8	117.97	11.01	10.78	2.13	93.51	83.19	12.41
		Others	2	4.03	0.47	0.50	-6.46	3.74	3.24	15.36
		Top 75	10	122.00	11.48	11.28	1.75	97.25	86.43	12.52
		Rest	0	0.00	0.00	0.00		0.01	0.00	
	<b>Overall NCL</b>	<b>10</b>	<b>122.00</b>	<b>11.48</b>	<b>11.24</b>	<b>2.14</b>	<b>97.26</b>	<b>86.36</b>	<b>12.62</b>	
6	SECL	Top 37	5	143.90	13.46	11.18	20.39	83.38	68.70	21.37
		Others	10	21.81	1.98	1.33	48.76	13.45	9.52	41.26
		Top 75	15	165.71	15.44	12.51	23.41	96.83	78.22	23.79
		Rest	47	16.29	1.32	1.65	-19.87	9.78	13.62	-28.18
	<b>Overall SECL</b>	<b>62</b>	<b>182.00</b>	<b>16.76</b>	<b>14.16</b>	<b>18.36</b>	<b>106.61</b>	<b>91.84</b>	<b>16.08</b>	
7	WCL	Top 37	4	18.68	1.68	1.62	3.45	10.42	10.76	-3.20
		Others	13	28.36	3.43	1.62	112.03	19.60	10.17	92.77
		Top 75	17	47.04	5.11	3.24	57.62	30.02	20.93	43.42
		Rest	36	14.96	1.50	2.57	-41.56	8.34	13.28	-37.18
	<b>Overall WCL</b>	<b>53</b>	<b>62.00</b>	<b>6.61</b>	<b>5.81</b>	<b>13.77</b>	<b>38.36</b>	<b>34.21</b>	<b>12.13</b>	
8	CIL	Top 37	37	528.21	50.10	45.98	8.96	368.65	316.34	16.54
		Others	38	89.13	9.20	6.33	45.40	61.48	45.03	36.55
		Top 75	75	617.34	59.30	52.30	13.37	430.13	361.36	19.03
		Rest of mines	210	82.66	7.12	7.92	-10.02	48.92	52.27	-6.41
	<b>Overall CIL</b>	<b>285</b>	<b>700.00</b>	<b>66.42</b>	<b>60.22</b>	<b>10.30</b>	<b>479.05</b>	<b>413.63</b>	<b>15.82</b>	

Top 75 = Top 37 + others mines including in top 75 mines

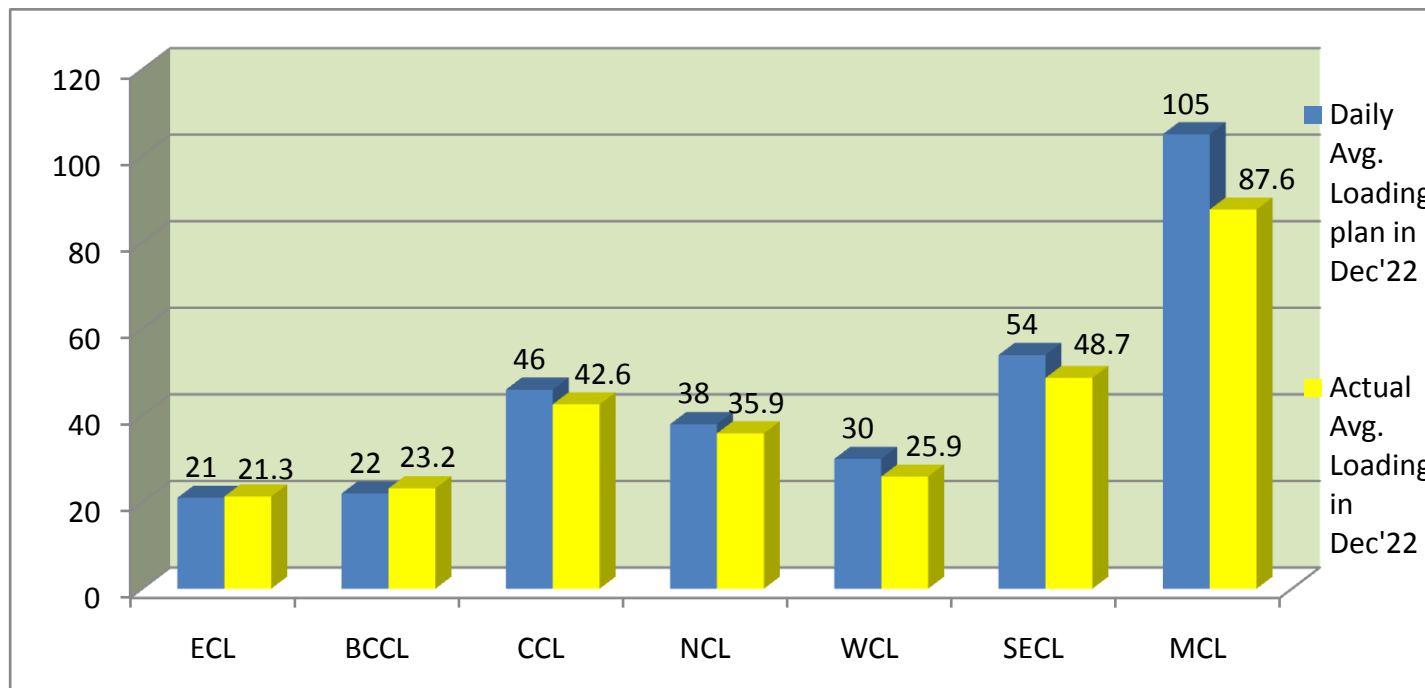
Rest of Mines = other than top 75

Overall Mines = Top 75 + rest of mines



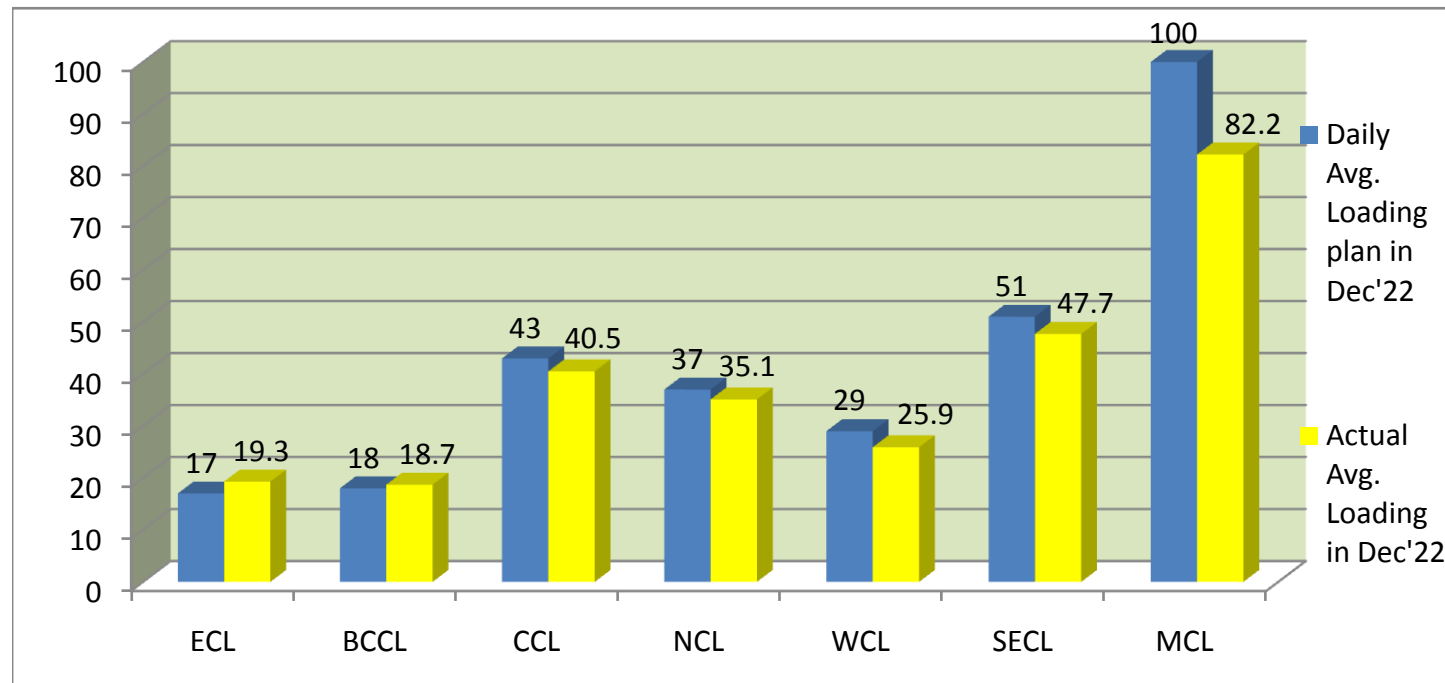
**COMPANY-WISE MOVEMENT OF RAKES FOR ALL SECTORS PER DAY IN DEC'22 (Prov.)**

COMPANY	Daily Avg. Loading plan in Dec'22	Actual Avg. Loading in Dec'22	Achievemnt (%)	Actual Avg. Loading in Dec'21	Growth% (Dec'21 to Dec'22)
ECL	21	21.3	<b>101.43</b>	19.1	11.52
BCCL	22	23.2	<b>105.45</b>	20.8	11.54
CCL	46	42.6	92.61	40.7	4.67
NCL	38	35.9	94.47	34.9	2.87
WCL	30	25.9	86.33	29	-10.69
SECL	54	48.7	90.19	49.8	-2.21
MCL	105	87.6	83.43	94.7	-7.50
<b>Total</b>	<b>316.0</b>	<b>285.2</b>	<b>90.25</b>	<b>289.0</b>	<b>-1.31</b>



**COMPANY-WISE MOVEMENT OF RAKES FOR POWER SECTOR PER DAY IN DEC'22 (Prov.)**

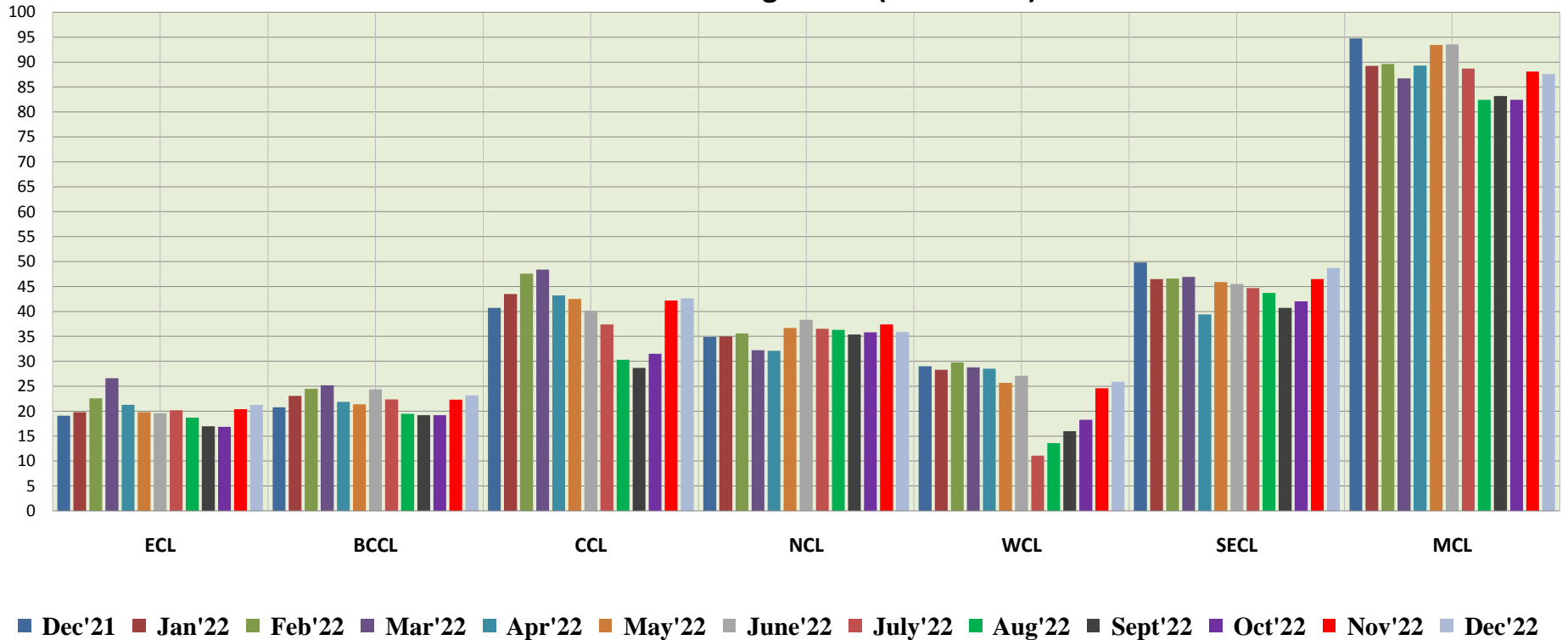
COMPANY	Daily Avg. Loading plan in Dec'22	Actual Avg. Loading in Dec'22	Achievemnt (%)	Actual Avg. Loading in Dec'21	Growth% (Dec'21 to Dec'22)
ECL	17	19.3	<b>113.53</b>	18.1	6.63
BCCL	18	18.7	<b>103.89</b>	17.2	8.72
CCL	43	40.5	94.19	37.6	7.71
NCL	37	35.1	94.86	34.7	1.15
WCL	29	25.9	89.31	28.9	-10.38
SECL	51	47.7	93.53	45	6.00
MCL	100	82.2	82.20	83.1	-1.08
<b>Total</b>	<b>295.00</b>	<b>269.40</b>	<b>91.32</b>	<b>264.60</b>	<b>1.81</b>



**COMPANY-WISE MOVEMENT OF RAKES FOR ALL SECTORS PER DAY DURING DEC'21 TO DEC'22(Provisional)**

COMPANY	Dec'21	Jan'22	Feb'22	Mar'22	Apr'22	May'22	June'22	July'22	Aug'22	Sept'22	Oct'22	Nov'22	Dec'22
ECL	19.1	19.8	22.6	26.6	21.3	19.8	19.6	20.2	18.7	17	16.9	20.4	21.3
BCCL	20.8	23.1	24.5	25.2	21.9	21.4	24.4	22.4	19.5	19.2	19.2	22.3	23.2
CCL	40.7	43.5	47.6	48.4	43.2	42.5	40.1	37.4	30.3	28.7	31.5	42.2	42.6
NCL	34.9	35	35.6	32.2	32.1	36.7	38.3	36.5	36.3	35.4	35.8	37.4	35.9
WCL	29	28.3	29.8	28.8	28.5	25.7	27.1	11.1	13.6	16	18.3	24.6	25.9
SECL	49.8	46.5	46.6	46.9	39.4	45.9	45.5	44.7	43.7	40.7	42	46.5	48.7
MCL	94.7	89.2	89.6	86.7	89.3	93.4	93.5	88.7	82.4	83.2	82.4	88.1	87.6
<b>Total</b>	<b>289</b>	<b>285.4</b>	<b>296.3</b>	<b>294.8</b>	<b>275.8</b>	<b>285.3</b>	<b>288.5</b>	<b>261</b>	<b>244.5</b>	<b>240.2</b>	<b>246.1</b>	<b>281.5</b>	<b>285.2</b>

**Actual Rakes Loading Status (All Sectors)**



**COMPANY-WISE MOVEMENT OF RAKES FOR POWER SECTOR PER DAY DURING DEC'21 TO DEC'22(Provisional)**

COMPANY
---------

	Dec'21	Jan'22	Feb'22	Mar'22	Apr'22	May'22	June'22	July'22	Aug'22	Sept'22	Oct'22	Nov'22	Dec'22
ECL	18.1	18.1	17.1	19.5	17.7	17.5	18.2	18.3	16.4	15.8	15.5	17.8	19.3
BCCL	17.2	18.7	20.8	21.7	18.7	18	19.7	18	16.2	16.4	16.6	17.4	18.7
CCL	37.6	40.5	45	45.9	41.8	41.1	38.7	36.1	29.2	27	29.8	40.5	40.5
NCL	34.7	34.9	34.8	31.8	32.1	36.7	38.3	36.5	36	35.4	35.8	37.4	35.1
WCL	28.9	28.3	29.7	28.8	28.5	25.7	27.1	11.1	13.6	16	18.3	24.6	25.9
SECL	45	41.1	42.3	43	38.5	45.9	45.5	44.5	42.8	39.8	41	45.6	47.7
MCL	83.1	78	80.9	78.3	83.6	89.3	90.2	83.8	78.3	82	80.5	82.6	82.2
<b>Total</b>	<b>264.6</b>	<b>259.6</b>	<b>270.6</b>	<b>269</b>	<b>260.9</b>	<b>274.3</b>	<b>277.7</b>	<b>248.3</b>	<b>232.5</b>	<b>232.4</b>	<b>237.5</b>	<b>265.9</b>	<b>269.4</b>

**Actual Rake Loading Status (Power)**

