

Monthly Coal Statistics for July'2022(Provisional)

Coal Production

India's coal production increased by 11.37% to 60.42 MT from 54.25 MT during July 22 as compared to July 21. During July 22, CIL, SCCL and Captives/ Others registered a growth of 11.12% & 44.37% by producing 47.33 MT & 9.80 MT respectively. However, SCCL registered a negative growth of 32.51% during the Month .

Coal Production

Fig. in MT

SI No	Subs	Monthly Target	Production during July 22				Production upto July 22		
			FY 23	Achmt.(%)	FY 22	Growth (%) (FY23-FY22)	FY 23	FY 22	Growth (%) (FY23-FY22)
1	ECL	3.10	2.52	81.29	2.16	16.67	11.01	10.08	9.23
2	BCCL	2.79	2.92	104.66	2.19	33.33	10.79	8.01	34.71
3	CCL	5.58	5.56	99.64	4.13	34.62	21.25	17.00	25.00
4	NCL	10.85	10.95	100.92	9.01	21.53	43.29	34.76	24.54
5	WCL	4.34	1.65	38.02	2.73	-39.56	15.92	13.14	21.16
6	SECL	12.40	9.13	73.63	9.97	-8.43	44.83	37.66	19.04
7	MCL	14.73	14.58	98.98	12.40	17.58	59.94	45.91	30.56
8	NEC		0.02				0.06		
CIL		53.79	47.33	87.98	42.59	11.12	207.09	166.56	24.33
9	SCCL	4.60	3.29	71.53	4.87	-32.51	20.20	20.44	-1.15
10	Captives/Others	10.99	9.80	89.21	6.79	44.37	38.42	23.10	66.35
Grand Total		69.38	60.42	87.09	54.25	11.37	265.71	210.10	26.47

Coking Coal Production

Fig. in MT

SI No	Subs	Monthly Target	Production during July			Production upto July		
			FY 23	FY 22	Growth (%) (FY23-FY22)	FY 23	FY 22	Growth (%) (FY23-FY22)
1	ECL	0.00	0.00	0.00	0.00	0.00	0.01	-71.43
2	BCCL	1.96	2.52	2.04	23.45	10.06	7.49	34.31
3	CCL	1.39	1.36	0.99	37.63	5.24	4.39	19.14
5	WCL	0.01	0.01	0.02	-46.67	0.03	0.06	-43.33
6	SECL	0.02	0.02	0.02	5.56	0.07	0.07	2.78
CIL		3.38	3.91	3.06	27.55	15.41	12.02	28.13

Coal Despatch

India's coal despatch increased by 8.51% to 67.81 MT from 62.49 MT during July 22 as compared to July 21. During July 22, CIL and Captives/Others registered a growth of 8.17% & 40.78% by despatching 54.54 & 9.91 MT respectively. However, SCCL registered a negative growth of 33.25% during the Month .

Coal Despatch

Fig. in MT

SI No	Subs	Monthly Target	Despatch during July				Despatch upto July		
			FY 23	Achmt.(%)	FY 22	Growth (%) (FY23-FY22)	FY 23	FY 22	Growth (%) (FY23-FY22)
1	ECL	2.95	2.86	96.95	2.63	8.75	11.81	13.63	-13.35
2	BCCL	2.95	3.00	101.69	2.62	14.50	11.85	10.26	15.50

3	CCL	6.51	6.35	97.54	4.83	31.47	26.37	23.61	11.69
4	NCL	10.85	11.71	107.93	9.99	17.22	45.95	38.39	19.69
5	WCL	4.50	2.55	56.67	4.04	-36.88	20.58	20.27	1.53
6	SECL	13.02	11.75	90.25	12.55	-6.37	51.16	51.47	-0.60
7	MCL	16.43	16.29	99.15	13.74	18.56	64.31	53.22	20.84
8	NEC		0.02				0.05	0.00	
	CIL	57.21	54.54	95.33	50.42	8.17	232.07	210.86	10.06
9	SCCL	4.60	3.36	73.04	5.03	-33.25	20.66	21.72	-4.87
10	Captives	10.99	9.91	90.15	7.04	40.78	39.50	25.11	57.29
	Grand Total	72.80	67.81	93.15	62.49	8.51	292.23	257.69	13.40

The Power utilities despatch has grown by 17.09% to 58.45 MT during July 22 as compared to 49.92 MT in July 21 due to increase in power demand.

Coal Despatch to Different Sectors

Fig. in MT

Sectors	Despatch during July			Despatch upto July		
	FY 23	FY 22	Growth (%) (FY23-FY22)	FY 23	FY 22	Growth (%) (FY23-FY22)
Power	58.45	49.92	17.09	250.52	206.50	21.31
CPP	2.80	3.42	-18.17	11.00	15.43	-28.67
Steel	0.80	0.42	89.98	2.87	1.91	50.55
Cement	0.56	0.55	0.91	2.46	2.38	3.62
Sponge Iron	0.60	0.66	-8.69	2.39	2.40	-0.50
Others	4.60	7.52	-38.80	22.99	29.08	-20.96
Total	67.81	62.49	8.53	292.23	257.69	13.40

Lignite Production

Fig. in MT

SI No	Company	Production during July			Production upto July		
		FY 23	FY 22	Growth (%) (FY23-FY22)	FY 23	FY 22	Growth (%) (FY23-FY22)
1	NLCIL	2.30	2.27	1.50	9.12	7.21	26.54
2	GMDCL	0.82	0.72	14.05	3.32	2.75	20.98
3	GIPCL	0.00	0.01	-100.00	1.08	0.80	34.88
4	RSMML	0.10	0.19	-44.97	0.30	0.56	-47.60
5	BLMCL	0.35	0.59	-40.68	1.76	1.83	-3.61
6	GHCL	0.00	0.00		0.02	0.04	-45.00
7	VS Lignite	0.14	0.07	113.85	0.34	0.28	20.14
8	GSPL	0.01	0.09	-85.11	0.63	0.49	29.30
Grand Total		3.73	3.93	-5.07	16.57	13.95	18.74

Lignite Despatch

Fig. in MT

SI No	Company	Despatch during July			Despatch upto July		
		FY 23	FY 22	Growth (%) (FY23-FY22)	FY 23	FY 22	Growth (%) (FY23-FY22)
1	NLCIL	2.35	2.53	-7.11	9.42	9.74	-3.25
2	GMDCL	0.82	0.72	14.05	3.32	2.75	20.98
3	GIPCL	0.00	0.01	-100.00	1.08	0.80	34.88
4	RSMML	0.10	0.19	-44.97	0.30	0.56	-47.60
5	BLMCL	0.42	0.58	-28.08	2.25	1.96	14.53
6	GHCL	0.01	0.00	200.00	0.02	0.02	26.32
7	VS Lignite	0.13	0.08	72.73	0.32	0.28	14.08
8	GSPL	0.01	0.18	-92.18	0.49	0.50	-2.58
Grand Total		3.85	4.29	-10.17	17.20	16.61	3.53

Power Generation

Fig in MU

Source-wise	Jul-22	% share	Jul-21	Jun-22	Growth(%) (July'22-July'21)	Growth(%) (July'22-June'22)
-------------	--------	---------	--------	--------	-----------------------------	-----------------------------

Coal	86039	64.24	82127	95880	4.76	-10.26
Lignite	2911	2.17	2349	3093	23.93	-5.88
Hydro	21145	15.79	20527	15253	3.01	38.63
Nuclear	3755	2.80	3233	3537	16.15	6.16
Gas, Naptha & Diesel	1837	1.37	2996	2130	-38.68	-13.76
RES (Wind, Solar, Biomass & Others)	18244	13.62	17190	19102	6.13	-4.49
Total	133931	100.00	128422	138995	4.29	-3.64

Coal based power generation has registered a growth of 4.76% in July 2022 as compared to July 2021. The overall power generation in July 2022 has been 4.29% higher than the power generated in July 2021. However, Coal based power generation in the month of July 2022 has been 86039 MU in comparison to 95880 MU in June 2022 and registered a negative growth of 10.26 %. Total power generation has also decreased in July 2022 to 133931 MU from 138995 MU in June 2022 and registered a negative growth of 3.64 %.

Electricity Prices and Clearing Volume in Indian Energy Exchange

Item	Type	During the period of July		
		FY 23	FY 22	Growth (%)
Energy Prices (INR per MWh)	RTC	5409.94	2945.78	83.65
	Evening	8438.25	3813.07	121.30
	Day	3216.68	2286.66	40.67
	Night	5564.47	3118.4	78.44
	Morning	4435.26	2496.2	77.68
Market Clearing Volume (BU)	RTC	4726.68	5708.39	-17.20
	Evening	4500.1	6096.24	-26.18
	Day	4813.22	5204.38	-7.52
	Night	4244.87	5765.44	-26.37
	Morning	5758.3	5908.77	-2.55
	Total	3516652.2	4247039.85	-17.20

Despatch of Coal By CIL
Fig. in MT

Sectors	Coal Despatch during July			Coal Despatch upto July		
	FY 23	FY 22	Growth (%) (FY23-FY22)	FY 23	FY 22	Growth (%) (FY23-FY22)
Power	47.02	39.11	20.23	199.49	165.26	20.72
CPP	2.50	3.12	-19.95	9.36	13.91	-32.71
Steel	0.31	0.08	278.05	1.05	0.44	137.56
Cement	0.26	0.29	-8.77	1.08	1.35	-19.70
Sponge Iron	0.58	0.64	-9.80	2.26	2.36	-4.12
Others	3.87	7.18	-46.09	18.83	27.55	-31.65
Total	54.54	50.42	8.17	232.07	210.86	10.06

Despatch of Coal By SCCL
Fig. in MT

Sectors	Coal Despatch during July			Coal Despatch upto July		
	FY 23	FY 22	Growth (%) (FY23-FY22)	FY 23	FY 22	Growth (%) (FY23-FY22)
Power	2.82	4.22	-33.19	17.24	18.08	-4.64
CPP	0.13	0.22	-43.50	0.78	1.11	-29.67
Steel						
Cement	0.14	0.23	-41.45	0.93	0.96	-3.95
Sponge Iron	0.02	0.01	46.15	0.13	0.04	202.38
Others	0.26	0.34	-24.71	1.59	1.53	4.20
Total	3.36	5.03	-33.25	20.66	21.72	-4.87

Coal Despatch to Different Sectors by Captive and Others
Fig. in MT

Sectors	Coal Despatch during July			Coal Despatch upto July		
	FY 23	FY 22	Growth (%) (FY23-FY22)	FY 23	FY 22	Growth (%) (FY23-FY22)
Power	8.611	6.59	30.67	33.788	23.17	45.84
CPP	0.18	0.08	127.27	0.86	0.41	112.56
Steel	0.49	0.34	44.21	1.82	1.47	24.34
Cement	0.16	0.03	384.85	0.46	0.07	580.60
Sponge Iron						
Others	0.476	0.001	47500	2.57	0.00	64075
Total	9.91	7.04	40.78	39.50	25.11	57.29

Top 37 Mines Production during July 2022 (provisional)

Sr. No	Subsidiary	Mines	Annual Target (MT)	Prod. Upto June 2022 (MT)	Prod. during July 2022 (MT)	Target upto July 2022 (MT)	Prod. Upto July 2022 (MT)	Achievement
1	ECL	Rajmahal	16	1.27	0.32	3.84	1.59	41.39%
2	ECL	Sonepur Bazari	11	2.90	0.90	3.68	3.80	103.22%
3	CCL	Amrapali	21	4.19	1.23	6.24	5.42	86.83%
4	CCL	Magadh	14	2.88	1.39	4.16	4.27	102.63%
5	CCL	Ashoka	9	2.50	0.74	2.68	3.24	121.22%
6	CCL	AKK	5	1.34	0.54	1.49	1.88	126.55%
7	NCL	Jayant	24	6.15	2.18	7.88	8.33	105.76%
8	NCL	Dudhichua	22	5.39	1.78	7.22	7.17	99.32%
9	NCL	Nigahi	21	5.98	2.00	6.89	7.98	115.84%
10	NCL	Amlohri	14	3.04	0.99	4.59	4.03	87.72%
11	NCL	Khadia	14	4.10	1.47	4.60	5.56	121.09%
12	NCL	Bina	10.5	2.90	1.01	3.45	3.90	113.25%
13	NCL	Krishnashila	7	1.87	0.62	2.30	2.49	108.36%
14	NCL	Block-B	5.47	1.59	0.50	1.80	2.09	116.41%
15	WCL	Penganga	6.3	1.67	0.15	1.73	1.82	104.85%
16	WCL	Mungoli	4.375	0.47	0.01	1.20	0.47	39.35%
17	WCL	Niljai Deep	4	0.86	0.05	1.10	0.91	82.54%
18	WCL	Makardhokra I	0	1.15	0.19	1.10	1.33	121.10%
19	SECL	Gevra	52	11.97	2.81	16.29	14.78	90.73%
20	SECL	Kusmunda	45	8.24	1.99	13.42	10.23	76.26%
21	SECL	Dipka	38	6.05	1.34	11.42	7.39	64.69%
22	SECL	Manikpur	4.90	1.39	0.50	1.45	1.88	130.39%
23	SECL	Gare Pelma IV/2&3	4.00	0.73	0.17	1.18	0.89	75.78%
24	MCL	Bhubaneswari	28	7.77	2.45	8.83	10.22	115.73%
25	MCL	Lakhanpur	21	5.88	1.91	6.70	7.79	116.30%
26	MCL	Kulda	18.5	4.88	1.74	5.94	6.62	111.52%
27	MCL	Garjanbahal	15.16	3.84	1.42	4.62	5.25	113.79%
28	MCL	Ananta	14	3.39	1.21	4.26	4.60	108.04%
29	MCL	Lingaraj	14	4.25	1.27	4.26	5.52	129.57%
30	MCL	Bharatpur	10	2.25	0.34	3.04	2.59	85.15%
31	MCL	Kaniha	10	2.95	0.94	3.04	3.89	127.72%
32	MCL	Hingula	10	2.34	0.73	3.04	3.07	100.77%
33	MCL	Jagannath	7.5	1.62	0.55	2.28	2.18	95.40%
34	MCL	Belpahar	7.5	1.09	0.30	2.28	1.39	60.85%
35	MCL	Balram	6.5	1.93	0.68	1.98	2.62	132.28%
36	MCL	Samaleswari	5	1.38	0.55	1.52	1.93	126.80%
37	MCL	Lajkura	4.5	1.28	0.37	1.37	1.65	120.62%
Total			524.21	123.48	37.31	162.86	160.79	98.73%

Particulars	No. of Mines
Mines produced more than 100%	24
Mines produced more than 80% , but less than 100%	7
Mines produced more than 50% , but less than 80%	4
Mines produced less than 50%	2

Top 37 OBR during July 2022 (provisional)

Sr. No	Subsidiary	Mines	Annual OBR Target (M.Cum)	OBR upto June 2022 (M.Cum)	OBR during July 2022 (M.Cum)	Target upto July 2022 (M.Cum)	OBR upto July 2022 (M.Cum)	Achievement
1	ECL	Rajmahal	24.1	3.56	0.64	8.25	4.20	43.15%
2	ECL	Sonepur Bazari	60.7	18.28	5.34	19.41	23.62	94.16%
3	CCL	Amrapali	24	4.13	2.02	7.13	6.15	57.93%
4	CCL	Magadh	18	3.91	1.03	5.35	4.94	73.08%
5	CCL	Ashoka	12	1.74	1.05	3.57	2.79	48.86%
6	CCL	AKK	8	2.53	0.61	2.38	3.14	106.21%
7	NCL	Jayant	53	16.30	5.23	16.99	21.54	95.96%
8	NCL	Dudhichua	72	16.74	5.46	23.23	22.20	72.05%
9	NCL	Nigahi	80	17.16	6.77	25.85	23.92	66.39%
10	NCL	Amlohri	59.5	15.77	5.62	19.49	21.39	80.91%
11	NCL	Khadia	51	12.75	3.63	16.31	16.38	78.21%
12	NCL	Bina	40.8	13.02	4.46	13.39	17.48	97.25%
13	NCL	Krishnashila	18.5	5.70	1.62	6.07	7.32	93.84%
14	NCL	Block-B	15	4.28	1.57	4.91	5.86	87.33%
15	WCL	Penganga	21	2.94	0.26	6.41	3.20	45.88%
16	WCL	Mungoli	22	2.39	0.07	6.74	2.47	35.52%
17	WCL	Niljai Deep	35.2	7.85	0.62	10.66	8.47	73.68%
18	WCL	Makardhokra I	18	5.35	0.13	5.44	5.47	98.37%
19	SECL	Gevra	68	18.36	4.59	21.59	22.95	85.03%
20	SECL	Kusmunda	57	13.51	3.29	18.10	16.81	74.67%
21	SECL	Dipka	39	4.15	0.99	12.38	5.14	33.49%
22	SECL	Manikpur	12	3.91	0.92	3.81	4.84	102.75%
23	SECL	Gare Pelma IV/2&3	10	1.14	0.11	3.18	1.25	35.84%
24	MCL	Bhubaneswari	16	1.93	0.40	5.46	2.33	35.37%
25	MCL	Lakhanpur	40	8.62	0.93	13.64	9.55	63.16%
26	MCL	Kulda	15.5	3.81	1.06	5.29	4.87	72.00%
27	MCL	Garjanbahal	11	3.69	0.74	3.75	4.43	98.22%
28	MCL	Ananta	24.5	8.19	2.17	9.21	10.36	88.90%
29	MCL	Lingaraj	12	5.03	1.11	4.09	6.14	122.81%
30	MCL	Bharatpur	10	2.63	0.66	3.41	3.29	77.18%
31	MCL	Kaniha	7	1.73	0.43	2.39	2.16	72.57%
32	MCL	Hingula	13	3.24	0.86	5.29	4.10	61.37%
33	MCL	Jagannath	7	2.31	0.52	2.39	2.83	96.57%
34	MCL	Belpahar	10	1.78	-0.15	3.41	1.63	52.22%
35	MCL	Balram	14.5	3.70	0.90	4.95	4.60	74.79%
36	MCL	Samaleswari	12	2.81	0.86	4.09	3.66	68.59%
37	MCL	Lajkura	10	3.11	0.64	3.41	3.76	91.32%
Total			1021.30	248.05	67.15	331.40	315.21	74.85%

Particulars	
Mines produced more than 100%	3
Mines produced more than 80% , but less than 100%	12
Mines produced more than 50% , but less than 80%	15
Mines produced less than 50%	7

Coal Production in mines of all Subsidiaries of CIL (provisional data)

Fig. in MT

SI No	Subs	Types of Mines	No of Mines	Annual Target (MT)	During July			Upto July		
					FY 23	FY 22	Growth %) M-O-M	FY 23	FY 22	Growth %) Y-O-Y
1	ECL	Top 37	2	27.00	1.22	0.85	43.53	5.39	4.45	21.12
		Others	2	4.30	0.29	0.42	-31.67	1.17	1.38	-15.22
		Top 75	4	31.30	1.51	1.27	18.66	6.56	5.83	12.52
		Rest	74	18.70	1.01	0.89	13.82	4.45	4.25	4.71
	Overall ECL	78	50.00	2.52	2.16	16.67	11.01	10.08	9.23	
2	BCCL	Top 37	0	0.00	0.00	0.00		0.00	0.00	
		Others	6	18.08	1.54	1.30	18.77	5.67	4.86	16.67
		Top 75	6	18.08	1.54	1.30	18.77	5.67	4.86	16.67
		Rest	24	13.92	1.38	0.89	54.61	5.12	3.15	62.54
	Overall BCCL	30	32.00	2.92	2.19	33.33	10.79	8.01	34.71	
3	CCL	Top 37	4	49.00	3.90	2.62	48.85	14.81	10.63	39.32
		Others	5	12.55	0.88	0.81	8.68	3.09	3.46	-10.69
		Top 75	9	61.55	4.78	3.43	39.37	17.90	14.09	27.04
		Rest	33	14.45	0.78	0.70	11.39	3.35	2.91	15.12
	Overall CCL	42	76.00	5.56	4.13	34.62	21.25	17.00	25.00	
4	MCL	Top 37	14	171.66	14.45	12.31	17.38	59.32	45.50	30.37
		Rest	5	4.34	0.13	0.09	44.44	0.62	0.50	24.00
	Overall MCL	19	176.00	14.58	12.40	17.58	59.94	45.91	30.56	
5	NCL	Top 37	8	117.97	10.55	8.72	20.99	41.57	33.52	24.02
		Others	2	4.03	0.40	0.29	37.93	1.72	1.24	38.71
		Top 75	10	122.00	10.95	9.01	21.53	43.29	34.76	24.54
		Rest	0	0.00	0.00	0.00		0.00	0.00	
	Overall NCL	10	122.00	10.95	9.01	21.53	43.29	34.76	24.54	
6	SECL	Top 37	5	143.90	6.80	7.90	-13.92	35.18	29.16	20.64
		Others	10	21.81	1.55	1.15	34.78	5.66	4.23	33.81
		Top 75	15	165.71	8.35	9.05	-7.73	40.84	33.39	22.31
		Rest	55	16.29	0.78	0.92	-15.22	3.99	4.27	-6.56
	Overall SECL	70	182.00	9.13	9.97	-8.43	44.83	37.66	19.04	
7	WCL	Top 37	4	18.68	0.39	0.83	-53.01	4.53	4.34	4.38
		Others	13	28.36	0.79	0.91	-13.41	7.56	3.86	95.85
		Top 75	17	47.04	1.18	1.74	-32.30	12.09	8.20	47.44
		Rest	43	14.96	0.47	0.99	-52.32	3.83	4.94	-22.47
	Overall WCL	60	62.00	1.65	2.73	-39.56	15.92	13.14	21.16	
8	CIL	Top 37	37	528.21	37.31	33.23	12.28	160.80	127.60	26.02
		Others	38	89.13	5.45	4.88	11.67	24.87	19.03	30.69
		Top 75	75	617.34	42.76	38.11	12.20	185.67	146.63	26.62
		Rest of mines	234	82.66	4.57	4.48	2.02	21.46	19.93	7.68
	Overall CIL	309	700.00	47.33	42.59	11.13	207.09	166.56	24.33	

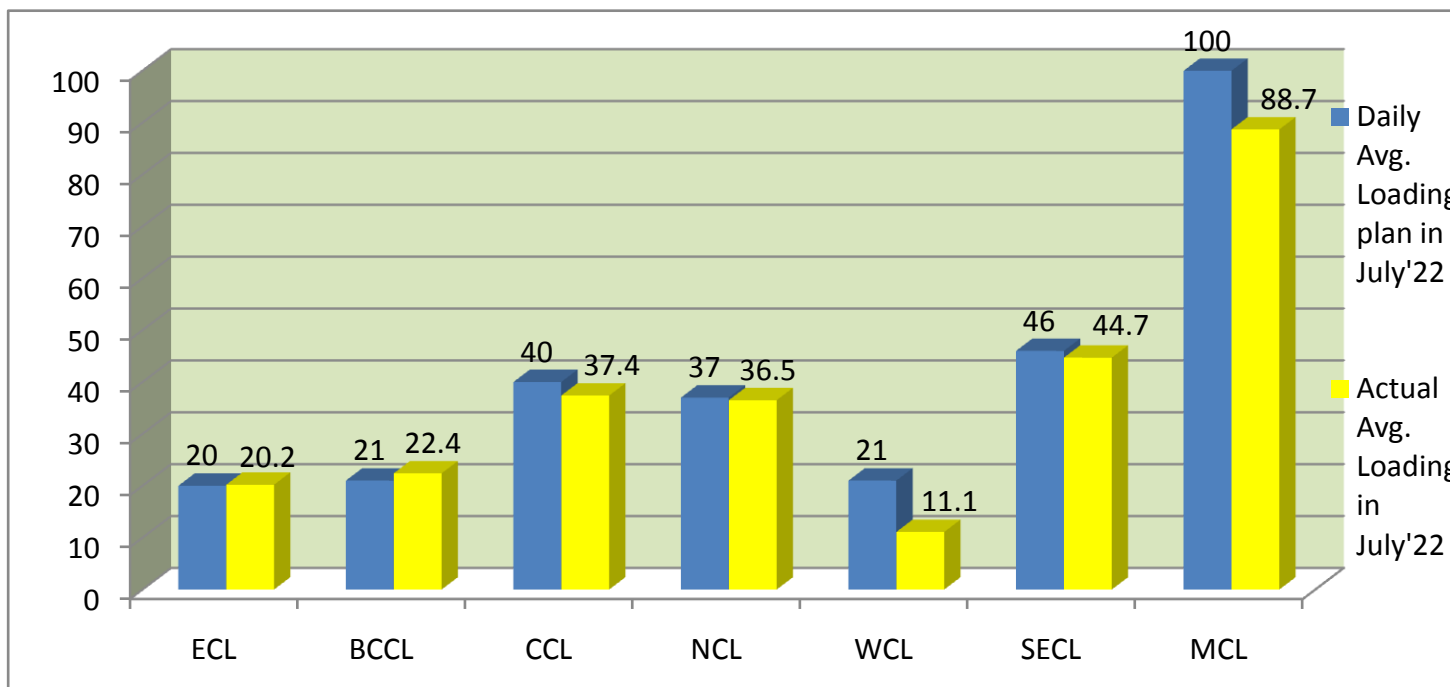
Top 75 = Top 37 + others mines including in top 75 mines

Rest of Mines = other than top 75

Overall Mines = Top 75 + rest of mines

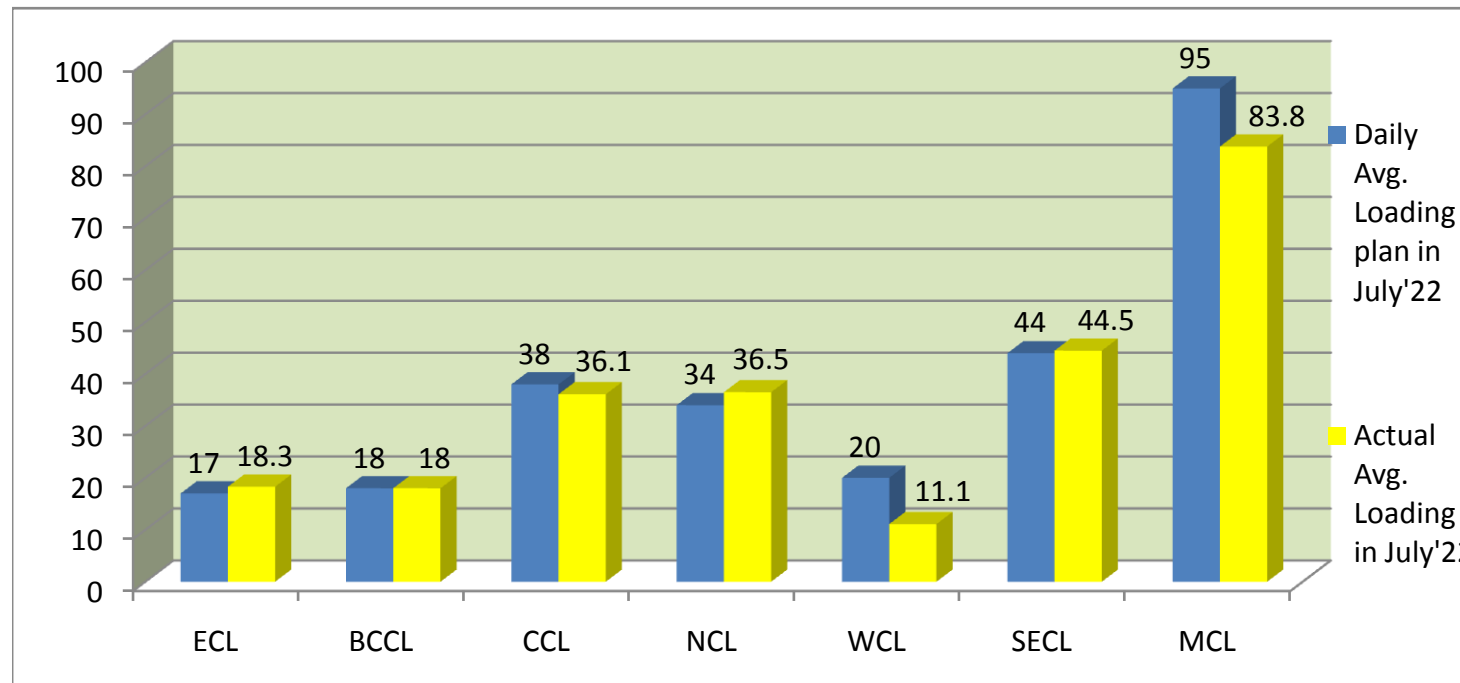
COMPANY-WISE MOVEMENT OF RAKES FOR ALL SECTORS PER DAY IN JULY '22 (Prov.)

COMPANY	Daily Avg. Loading plan in July'22	Actual Avg. Loading in July'22	Achievemnt (%)	Actual Avg. Loading in July'21	Growth% (July'21 to July'22)
ECL	20	20.2	101	15.3	32
BCCL	21	22.4	107	21	7
CCL	40	37.4	94	33.7	11
NCL	37	36.5	99	28	30
WCL	21	11.1	53	21.8	-49.08
SECL	46	44.7	97	42.5	5
MCL	100	88.7	89	82.2	8
Total	285	261.0	92	244.5	7



COMPANY-WISE MOVEMENT OF RAKES FOR POWER SECTOR PER DAY IN JUNE '22 (Prov.)

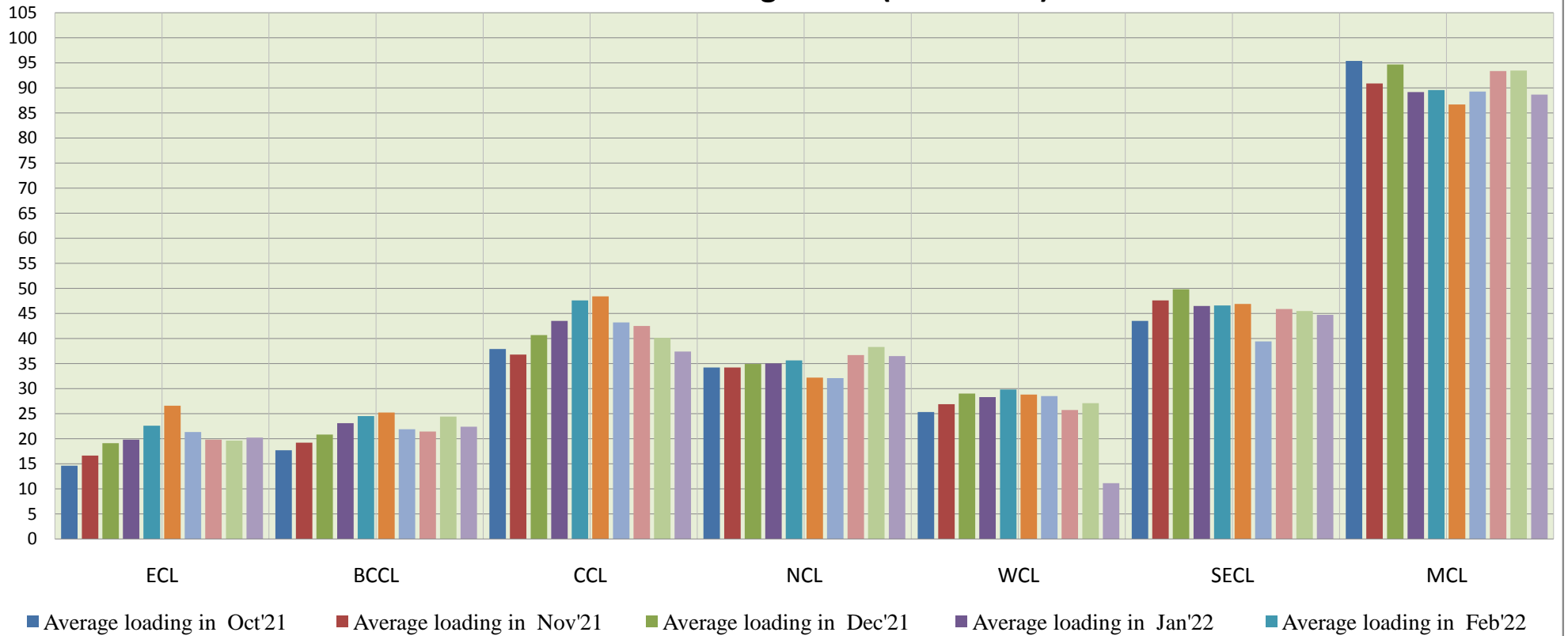
COMPANY	Daily Avg. Loading plan in July'22	Actual Avg. Loading in July'22	Achievemnt (%)	Actual Avg. Loading in July'21	Growth% (July'21 to July'22)
ECL	17	18.3	108	13.7	34
BCCL	18	18	100	17.4	3
CCL	38	36.1	95	32	13
NCL	34	36.5	107	25.5	43
WCL	20	11.1	56	20.8	-47
SECL	44	44.5	101	36	24
MCL	95	83.8	88	65.2	29
Total	266	248.3	93	210.6	18



COMPANY-WISE MOVEMENT OF RAKES FOR ALL SECTORS PER DAY DURING OCT'21 TO JULY'22(Provisional)

COMPANY	Average loading in									
	Oct'21	Nov'21	Dec'21	Jan'22	Feb'22	Mar'22	Apr'22	May'22	June'22	July'22
ECL	14.6	16.6	19.1	19.8	22.6	26.6	21.3	19.8	19.6	20.2
BCCL	17.7	19.2	20.8	23.1	24.5	25.2	21.9	21.4	24.4	22.4
CCL	37.9	36.8	40.7	43.5	47.6	48.4	43.2	42.5	40.1	37.4
NCL	34.2	34.2	34.9	35	35.6	32.2	32.1	36.7	38.3	36.5
WCL	25.3	26.9	29	28.3	29.8	28.8	28.5	25.7	27.1	11.1
SECL	43.5	47.6	49.8	46.5	46.6	46.9	39.4	45.9	45.5	44.7
MCL	95.4	90.9	94.7	89.2	89.6	86.7	89.3	93.4	93.5	88.7
Total	268.6	272.2	289	285.4	296.3	294.8	275.8	285.3	288.5	261

Actual Rakes Loading Status (All Sectors)

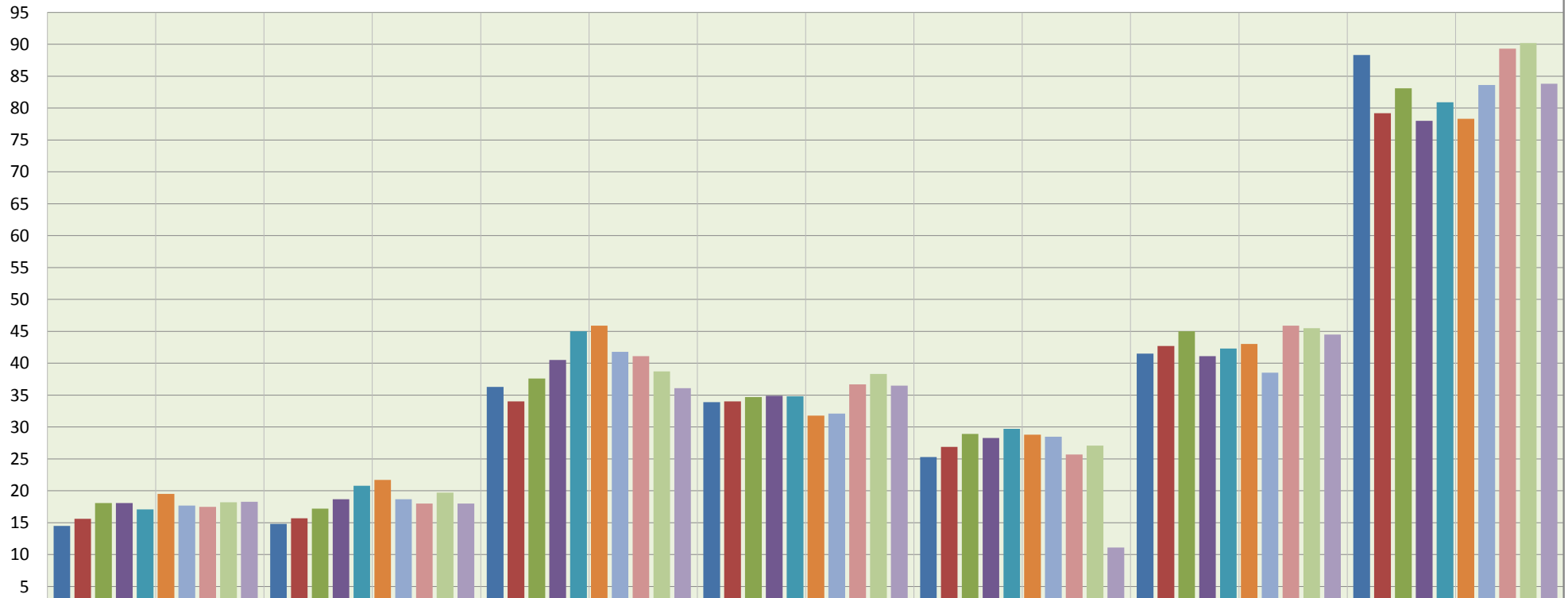


■ Average loading in Mar'22
 ■ Average loading in Apr'22
 ■ Average loading in May'22
 ■ Average loading in June'22
 ■ Average loading in July'22

COMPANY-WISE MOVEMENT OF RAKES FOR POWER SECTOR PER DAY DURING OCT'21 TO JULY'22(Provisional)

COMPANY	Average loading in									
	Oct'21	Nov'21	Dec'21	Jan'22	Feb'22	Mar'22	Apr'22	May'22	June'22	July'22
ECL	14.5	15.6	18.1	18.1	17.1	19.5	17.7	17.5	18.2	18.3
BCCL	14.8	15.7	17.2	18.7	20.8	21.7	18.7	18	19.7	18
CCL	36.3	34	37.6	40.5	45	45.9	41.8	41.1	38.7	36.1
NCL	33.9	34	34.7	34.9	34.8	31.8	32.1	36.7	38.3	36.5
WCL	25.3	26.9	28.9	28.3	29.7	28.8	28.5	25.7	27.1	11.1
SECL	41.5	42.7	45	41.1	42.3	43	38.5	45.9	45.5	44.5
MCL	88.3	79.2	83.1	78	80.9	78.3	83.6	89.3	90.2	83.8
Total	254.6	248.1	264.6	259.6	270.6	269	260.9	274.3	277.7	248.3

Actual Rake Loading Status (Power)





ECL

BCCL

CCL

NCL

WCL

SECL

MCL

- Average loading in Oct'21
- Average loading in Nov'21
- Average loading in Dec'21
- Average loading in Jan'22
- Average loading in Feb'22
- Average loading in Mar'22
- Average loading in Apr'22
- Average loading in May'22
- Average loading in June'22
- Average loading in July'22