

**Monthly Coal Statistics for Dec'2021(Provisional)**

**Coal Production**

India's coal production increased by 6.74 % to 74.78 MT from 70.06 MT during Dec 2021 as compared to Dec 2019. Out of the total production during Dec 2021, Coal India Ltd (CIL) achieved a growth of 3.79% by producing 60.220 MT of Coal and captive blocks registered a growth of 40.98% by producing 8.91 MT of Coal during the period. whereas, Singareni Collieries Ltd (SCCL) registered a negative growth of 1.12% by producing 5.65 MT of Coal during the period. Coal Production of FY 22 has been compared with FY 20 as FY 21 has been considered abnormal year due to restriction imposed on commercial activities by Government of India in wake of Covid-19.

*Fig. in MT*

Sl No	Subs	Monthly Target	Production during Dec				Production upto Dec				
			FY 22	Achmt.(%)	FY 21	FY 20	Growth (%) (FY22-FY20)	FY 22	FY 21	FY 20	Growth (%) (FY22-FY20)
1	ECL	4.34	2.90	66.82	4.22	4.92	-41.07	21.24	30.02	33.32	-36.25
2	BCCL	3.41	2.85	83.58	2.71	2.71	5.09	20.09	17.51	18.64	7.76
3	CCL	7.44	6.41	86.16	7.25	6.42	-0.17	42.78	39.79	39.23	9.04
4	NCL	11.16	11.24	100.72	10.55	9.64	16.59	86.36	84.23	79.57	8.53
5	WCL	7.13	5.81	81.49	5.45	6.00	-3.10	34.21	28.63	33.05	3.51
6	SECL	17.36	14.16	81.57	14.00	13.93	1.64	91.84	90.73	95.17	-3.50
7	MCL	17.36	16.85	97.06	14.11	14.36	17.33	117.12	101.85	89.22	31.27
	<b>CIL</b>	<b>68.20</b>	<b>60.22</b>	<b>88.30</b>	<b>58.29</b>	<b>58.02</b>	<b>3.79</b>	<b>413.64</b>	<b>392.76</b>	<b>388.42</b>	<b>6.49</b>
9	SCCL	6.25	5.65	90.48	5.72	5.72	-1.12	46.52	32.65	46.73	-0.46
10	Captives		8.91		7.07	6.32	40.98	62.18	46.95	45.47	36.75
	<b>Grand Total</b>		<b>74.78</b>		<b>71.07</b>	<b>70.06</b>	<b>6.74</b>	<b>522.34</b>	<b>472.36</b>	<b>480.62</b>	<b>8.68</b>

Front Runner  
 Laggard  
 Mediocre/Aspirant

### Coal Despatch

India's coal despatch increased by 14.62% to 75.05 MT from 65.48 MT during Dec 2021 as compared to Dec 2019. Out of the total production during Dec 2021, Coal India Ltd (CIL) achieved a growth of 12.70% by despatching 60.67 MT of Coal, Singareni Collieries Ltd (SCCL) achieved a growth of 2.01% by despatching 5.70 MT of Coal and captive blocks registered a growth of 43.23% by despatching 8.68 MT of Coal during the period.

Sl No	Subs	Monthly Target	Despatch During Dec					Despatch upto Dec			
			FY 22	Achmt.(%)	FY 21	FY 20	Growth (%) (FY22-FY20)	FY 22	FY 21	FY 20	Growth (%) (FY22-FY20)
1	ECL	3.41	2.83	82.99	3.10	4.56	-37.87	26.43	29.36	34.38	-23.12
2	BCCL	2.95	2.73	92.54	1.90	2.59	5.49	23.05	16.88	20.44	12.76
3	CCL	6.98	6.23	89.26	6.13	6.24	-0.22	51.47	45.20	50.17	2.59
4	NCL	11.94	11.73	98.24	10.00	9.71	20.79	92.19	79.25	79.64	15.75
5	WCCL	6.82	6.07	89.00	4.86	5.10	19.14	45.95	33.21	36.90	24.52
6	SECL	16.59	14.46	87.16	12.69	13.24	9.20	113.33	98.44	101.37	11.80
7	MCL	17.67	16.63	94.11	13.69	12.36	34.58	129.36	106.37	94.23	37.28
	<b>CIL</b>	<b>66.36</b>	<b>60.67</b>	<b>91.43</b>	<b>52.37</b>	<b>53.83</b>	<b>12.70</b>	<b>481.78</b>	<b>408.79</b>	<b>417.43</b>	<b>15.42</b>
9	SCCL	6.15	5.70	92.68	5.27	5.59	2.01	48.17	31.79	46.36	3.91
10	Captives		8.68		6.83	6.06	43.23	64.40	47.52	45.54	41.42
	<b>Grand Total</b>		<b>75.05</b>		<b>64.47</b>	<b>65.48</b>	<b>14.62</b>	<b>594.35</b>	<b>488.10</b>	<b>509.33</b>	<b>16.69</b>

■ Front Runner  
■ Laggard  
■ Mediocre/Aspirant

The Power utilities despatch has grown by 20.06% to 63.32 MT in the month of Dec 2021 as compared to 52.74 MT in Dec 2019. There is fall in import price since the end of Oct 2021, however, import prices are still at high level to discourage coal import. Further, Coal based Power demand has been increased by 12.7% upto Nov 2021 against Nov 2020.

### Coal Despatch to Different Sectors

Fig. in MT

Sectors	Despatch During Dec			Growth (%) (FY22-FY20)	Despatch Upto Dec			Growth (%) (FY22-FY20)
	FY 22	FY 21	FY 20		FY 22	FY 21	FY 20	
Power	63.32	50.49	52.74	20.06	489.96	384.88	409.74	19.58
CPP	3.74	4.37	5.28	-29.18	28.37	33.94	38.25	-25.85
Steel	0.73	0.68	0.89	-17.38	5.57	6.43	7.97	-30.11
Cement	0.63	0.65	0.73	-13.68	5.23	4.57	6.16	-15.02
Sponge Iron	0.74	1.00	0.89	-17.04	5.70	6.71	7.30	-21.84
Others	5.89	7.28	4.95	19.02	59.52	51.57	39.91	49.13
<b>Total</b>	<b>75.05</b>	<b>64.47</b>	<b>65.48</b>	<b>14.62</b>	<b>594.35</b>	<b>488.10</b>	<b>509.33</b>	<b>16.69</b>

**Lignite Production**

*Fig. in MT*

Sl No	Company	Production during Dec				Production upto Dec			
		FY 22	FY 21	FY 20	Growth (%) (FY22-FY20)	FY 22	FY 21	FY 20	Growth (%) (FY22-FY20)
1	NLCIL	1.75	1.35	2.28	-23.11	16.56	12.55	17.07	-2.99
2	GMDCL	0.84	0.71	0.65	29.14	6.07	3.52	5.00	21.42
3	GIPCL	0.41	0.43	0.41	1.48	1.70	2.43	1.98	-13.90
4	RSMML	0.17	0.09	0.09	102.35	1.50	0.47	0.55	172.99
5	BLMCL	0.40	0.56	0.44	-8.88	4.19	4.31	3.76	11.40
6	GHCL	0.00	0.01	0.02	-100.00	0.05	0.01	0.08	-41.46
7	VS Lignite	0.09	0.06	0.07	36.76	0.76	0.75	0.41	84.88
8	GSPL	0.22				1.21			
	<b>Grand Total</b>	<b>3.89</b>	<b>3.20</b>	<b>3.95</b>	<b>-1.47</b>	<b>32.04</b>	<b>24.03</b>	<b>28.85</b>	<b>11.06</b>

**Lignite Despatch**

*Fig. in MT*

Sl No	Company	Despatch during Dec				Despatch upto Dec			
		FY 22	FY 21	FY 20	Growth (%) (FY22-FY20)	FY 22	FY 21	FY 20	Growth (%) (FY22-FY20)
	NLCIL	2.30	1.38	2.16	6.49	19.99	13.50	19.13	4.48
2	GMDCL	0.84	0.71	0.65	29.14	6.07	3.52	5.00	21.42
3	GIPCL	0.41	0.43	0.41	1.48	1.70	2.43	1.98	-13.90
4	RSMML	0.17	0.09	0.09	102.35	1.50	0.47	0.55	172.99
5	BLMCL	0.44	0.57	0.48	-8.35	4.43	4.67	3.97	11.53
6	GHCL	0.01	0.00	0.00	75.00	0.05	0.02	0.05	4.17
7	VS Lignite	0.10	0.07	0.07	31.51	0.72	0.70	0.44	63.72
8	GSPL	0.22				1.30			
	<b>Grand Total</b>	<b>4.48</b>	<b>3.24</b>	<b>3.86</b>	<b>16.26</b>	<b>35.75</b>	<b>25.31</b>	<b>31.11</b>	<b>14.92</b>

**Power Generation in Dec 2021**

**Qty. (MU)**

Source-wise	Dec-21	% share	Dec-20	Dec-19	Growth(%) (Nov 22- Nov 20)
Coal	85579	75.67	81985	76522	11.84
Lignite	2272	2.01	1965	2547	-10.80
Hydro	8620	7.62	8668	9344	-7.75
Nuclear	3987	3.53	3513	3183	25.26
Gas, Naptha & Diesel	1905	1.68	3412	3207	-40.60
RES (Wind, Solar, Biomass & Others)	10731	9.49	10282	9606	11.71
<b>Total</b>	<b>113094</b>	<b>100.00</b>	<b>109825</b>	<b>104409</b>	<b>8.32</b>

Coal based power generation has registered a growth of 11.84 % in the month of Dec 2021 in comparison to Dec 2019 . The overall power generation in Dec 2021 has been 8.32% higher than the power generated in Dec 2019. Further, coal based power generation in the month of Dec 2021 has been 85579 MU in comparison to 75620 MU in Nov 2021 and registered a growth of 13.17%. Total power generation has also increased in Dec 2021 to 113094 MU from 103177 MU in Nov 2021.

**Electricity Prices and Clearing Volume in Indian Energy Exchange**

Item	Type	During the period of Dec		
		FY 22	FY 21	Growth (%)
Energy Prices (per Mwh)	RTC	3540.72	2827.88	25.21
	Evening	4692.06	2990.85	56.88
	Day	3396.69	3077.54	10.37
	Night	2050.77	2040.30	0.51
	Morning	4673.20	3524.75	32.58
Market Clearing Volume (BU)	RTC	7289.34	7534.14	-3.25
	Evening	7111.35	8225.48	-13.54
	Day	7668.63	8269.13	-7.26
	Night	5590.70	5094.70	9.74
	Morning	9865.24	9479.91	4.06
	<b>Total</b>	<b>5423272.70</b>	<b>5605397.7</b>	<b>-3.25</b>

**Coal Consumption in TPP (in MT)**

*Fig. in MT*

Item	During Oct			Upto Oct		
	FY 22	FY 21	Growth (%)	FY 22	FY 21	Growth (%)
Domestic Coal	57.93	48.40	19.70	365.8	291.56	25.47
Imported Coal Receipt	1.82	4.64	-60.69	18.14	26.79	-32.27
<b>Total Receipt</b>	<b>59.76</b>	<b>53.04</b>	<b>12.67</b>	<b>383.96</b>	<b>318.34</b>	<b>20.61</b>
<b>Coal Consumption</b>	<b>57.7</b>	<b>53.65</b>	<b>7.55</b>	<b>401.35</b>	<b>332.83</b>	<b>20.59</b>

**Despatch of Coal By CIL**

Sectors	Coal Despatch during Dec				Coal Production Upto Dec			
	FY 22	FY 21	FY 20	Growth (%) (FY22-FY20)	FY 22	FY 21	FY 20	Growth (%) (FY22-FY20)
Power	50.67	39.71	42.54	19.11	390.16	315.81	331.68	17.63
CPP	3.49	4.18	5.02	-30.48	26.11	32.27	35.91	-27.29
Steel	0.24	0.15	0.20	17.65	1.72	1.43	1.64	4.94
Cement	0.22	0.41	0.54	-59.26	2.41	3.11	4.10	-41.28
Sponge Iron	0.71	1.00	0.88	-19.59	5.56	6.69	7.24	-23.22
Others	5.34	6.94	4.64	15.01	55.82	49.49	36.86	51.44
<b>Total</b>	<b>60.67</b>	<b>52.37</b>	<b>53.83</b>	<b>12.71</b>	<b>481.78</b>	<b>408.79</b>	<b>417.43</b>	<b>15.42</b>

**Despatch of Coal By SCCL**

Sectors	Coal Despatch during Dec				Coal Production Upto Dec			
	FY 22	FY 21	FY 20	Growth (%) (FY22-FY20)	FY 22	FY 21	FY 20	Growth (%) (FY22-FY20)
Power	4.62	4.50	4.88	-5.41	39.91	26.87	39.32	1.50
CPP	0.25	0.20	0.26	-4.21	2.26	1.67	2.34	-3.67
Steel								
Cement	0.27	0.23	0.13	100.76	2.19	1.20	1.64	33.72
Sponge Iron	0.03	0.01	0.01	233.33	0.14	0.03	0.06	152.63
Others	0.54	0.34	0.30	76.64	3.67	2.03	3.00	22.34
<b>Total</b>	<b>5.70</b>	<b>5.27</b>	<b>5.59</b>	<b>2.01</b>	<b>48.17</b>	<b>31.79</b>	<b>46.36</b>	<b>3.91</b>

**Coal Despatch to Different Sectors by Captive and Others**

Sectors	Coal Despatch during Dec				Coal Production Upto Dec			
	FY 22	FY 21	FY 20	Growth (%) (FY22-FY20)	FY 22	FY 21	FY 20	Growth (%) (FY22-FY20)
Power	8.034	6.28	5.32	50.99	59.89	42.21	38.74	54.60
CPP								
Steel	0.49	0.53	0.68	-27.86	3.85	5.00	6.34	-39.18
Cement	0.15	0.02	0.06	147.46	0.64	0.26	0.42	51.91
Sponge Iron								
Others	0.01	0.00	0.00	500.00	0.02	0.06	0.05	-51.06
<b>Total</b>	<b>8.68</b>	<b>6.83</b>	<b>6.06</b>	<b>43.23</b>	<b>64.40</b>	<b>47.52</b>	<b>45.54</b>	<b>41.42</b>

**Top 35 Mines Production during Dec 2021(provisional)**

Sr. No	Subsidiary	Mines	Annual Target (MT)	Prod. upto Nov 2021 (MT)	Asking Rate for Dec 2021(MT)	Prod. during Dec 2021 (MT)	Prod. upto Dec 2021 (MT)	Achievement
1.00	ECL	Rajmahal	17.50	3.63	3.55	0.30	3.93	8.32%
2.00	ECL	Sonepur Bazari	11.30	4.67	1.70	1.08	5.75	63.70%
3.00	CCL	Ashoka	13.00	7.46	1.42	1.23	8.69	86.70%
4.00	CCL	Amarpali	20.00	9.38	2.72	1.56	10.93	57.19%
5.00	CCL	AKK	4.50	1.60	0.74	0.43	2.03	57.97%
6.00	CCL	Magadh	10.00	5.39	1.18	1.08	6.47	91.18%
7.00	MCL	Bhubaneswari	28.00	19.30	2.23	2.18	21.48	97.93%
8.00	MCL	Lakhanpur	21.00	14.98	1.54	1.64	16.61	106.19%
9.00	MCL	Bharatpur	10.00	4.49	1.41	1.04	5.54	73.85%
10.00	MCL	Lingaraj	14.00	7.91	1.56	1.49	9.40	95.56%
11.00	MCL	Samaleswari	6.00	2.66	0.86	0.53	3.19	61.55%
12.00	MCL	Kulda	16.00	11.60	1.13	1.89	13.49	167.33%
13.00	MCL	Kaniha	9.00	5.54	0.89	1.20	6.74	135.05%
14.00	MCL	Hingula	7.50	4.01	0.89	0.78	4.79	87.47%
15.00	MCL	Ananta	13.00	7.87	1.32	1.35	9.22	102.63%
16.00	MCL	Jagannath	7.00	3.91	0.79	0.77	4.68	97.30%
17.00	MCL	Belpahar	7.00	3.05	1.01	1.13	4.17	111.14%
18.00	MCL	Lajkura	4.50	2.60	0.49	0.46	3.06	94.81%
19.00	MCL	Balram	6.50	3.41	0.79	0.67	4.08	84.70%
20.00	MCL	Garjanbahal	12.00	7.44	1.17	1.60	9.04	136.88%
21.00	NCL	Nigahi	21.00	13.93	1.81	1.90	15.83	104.85%
22.00	NCL	Jayant	22.00	15.01	1.79	2.14	17.15	119.56%
23.00	NCL	Dudhichua	22.00	12.83	2.35	2.12	14.95	90.32%
24.00	NCL	Amlohri	14.00	7.34	1.71	1.33	8.67	77.85%
25.00	NCL	Khadia	14.00	8.91	1.30	1.29	10.20	99.07%
26.00	NCL	Bina	9.50	5.86	0.93	0.89	6.75	95.63%
27.00	NCL	Krishnashila	7.00	4.74	0.58	0.63	5.37	109.27%
28.00	NCL	Block B	5.47	3.91	0.40	0.47	4.39	118.99%
29.00	SECL	Gevra	47.60	21.99	6.56	4.00	25.99	60.96%
30.00	SECL	Dipka	35.00	17.80	4.41	3.43	21.23	77.85%
31.00	SECL	Kushmunda	45.00	15.29	7.61	2.83	18.12	37.23%
32.00	SECL	Manikpur	4.90	3.52	0.35	0.57	4.09	161.34%
33.00	WCL	Niljai Deep	4.30	1.93	0.61	0.21	2.14	34.45%
34.00	WCL	Mungoli	4.00	1.70	0.59	0.23	1.93	38.36%
35.00	WCL	Penganga	6.30	3.49	0.72	0.70	4.19	97.09%
<b>Total</b>			<b>499.87</b>	<b>269.13</b>	<b>59.11</b>	<b>45.15</b>	<b>314.28</b>	<b>76.37%</b>

Particulars	No. of Mines
Mines produced more than 100%	11
Mines produced more than 80% , but less than 100%	12
Mines produced more than 50% , but less than 80%	8
Mines produced less than 50%	4

Note: Asking Rate has been derived by assuming even spread of mining activity across the months. However, the mining operations has seasonality effect.

**Top 35 Mines-wise OBR during Dec 2021(provisional)**

S.No	Subsidiary	Mines	Annual Target (M.Cum)	OBR upto Nov 2021 (M.Cum)	Asking Rate for Dec 2021	OBR during Dec 2021 (M.Cum)	OBR upto Dec 2021 (M.Cum)	Achievement
1	ECL	Rajmahal	33.20	10.98	5.69	1.24	12.23	21.85%
2	ECL	Sonepur Bazar	71.40	41.17	7.75	6.68	47.85	86.25%
3	CCL	Ashoka	20.00	10.15	2.52	1.06	11.20	41.80%
4	CCL	Amarpali	25.00	9.65	3.93	1.48	11.13	37.69%
5	CCL	AKK	7.00	5.09	0.49	0.93	6.02	189.61%
6	CCL	Magadh	15.00	8.76	1.60	1.40	10.15	87.23%
7	MCL	Bhubaneswari	18.00	9.34	2.22	1.23	10.57	55.43%
8	MCL	Lakhanpur	40.00	24.42	3.99	3.61	28.03	90.40%
9	MCL	Bharatpur	12.00	7.72	1.10	0.89	8.61	81.39%
10	MCL	Lingaraj	14.00	7.54	1.66	1.69	9.23	102.09%
11	MCL	Samaleswari	9.50	6.81	0.69	1.24	8.05	180.03%
12	MCL	Kulda	18.00	10.56	1.90	1.27	11.84	66.85%
13	MCL	Kaniha	6.00	4.54	0.37	0.76	5.30	203.76%
14	MCL	Hingula	12.00	12.82	0.21	1.58	14.40	747.80%
15	MCL	Ananta	20.00	16.10	1.00	2.63	18.73	263.13%
16	MCL	Jagannath	7.00	3.86	0.80	0.60	4.45	73.97%
17	MCL	Belpahar	8.00	2.69	1.36	0.90	3.60	66.44%
18	MCL	Lajkura	10.00	7.41	0.66	1.16	8.58	175.59%
19	MCL	Balram	16.00	9.23	1.73	1.39	10.63	80.34%
20	MCL	Garjanbahal	9.00	5.70	0.85	0.52	6.22	61.75%
21	NCL	Nigahi	78.00	38.85	10.03	4.50	43.36	44.90%
22	NCL	Jayant	48.50	32.32	4.14	5.88	38.21	141.94%
23	NCL	Dudhichua	68.50	33.97	8.85	5.84	39.81	65.99%
24	NCL	Amlohri	56.50	34.71	5.58	4.62	39.34	82.85%
25	NCL	Khadia	50.50	34.01	4.22	4.80	38.81	113.52%
26	NCL	Bina	38.90	28.26	2.73	4.45	32.71	163.13%
27	NCL	Krishnashila	17.50	9.42	2.07	1.85	11.26	89.20%
28	NCL	Block B	17.00	12.41	1.18	1.72	14.13	146.10%
29	SECL	Gevra	65.00	30.94	8.73	4.85	35.79	55.52%
30	SECL	Dipka	36.00	13.57	5.75	2.14	15.71	37.21%
31	SECL	Kushmunda	50.00	22.82	6.96	3.43	26.25	49.26%
32	SECL	Manikpur	13.00	8.26	1.22	1.63	9.89	133.98%
33	WCL	Niljai Deep	30.00	21.31	2.23	2.24	23.56	100.77%
34	WCL	Mungoli	15.50	11.70	0.97	1.72	13.42	176.91%
35	WCL	Penganga	30.00	12.56	4.47	2.18	14.74	48.85%
<b>Total</b>			<b>986.00</b>	<b>559.64</b>	<b>109.66</b>	<b>84.12</b>	<b>643.76</b>	<b>76.72%</b>

Particulars	No. of Mines
Mines performed more than 100%	14
Mines performed more than 80% , but less than 100%	7
Mines performed more than 50% , but less than 80%	7
Mines performed less than 50%	7

## Coal Production in mines of all Subsidiaries of CIL (provisional data)

Fig. in MT

Srl No	Subs	Types of Mines	No of Mines	Annual Target (MT)	During Dec			Upto Dec		
					FY 22	FY 20	Growth (%) M-O-M	FY 22	FY 20	Growth (%) Y-O-Y
1	ECL	Top 35	2	28.80	1.38	2.86	-51.75	9.68	17.97	-46.14
		Others	2	3.80	0.37	0.54	-31.48	3.29	3.89	-15.48
		Top 75	4	32.60	1.75	3.40	-48.53	12.97	21.86	-40.69
		Rest	74	19.40	1.15	1.52	-24.34	8.27	11.46	-27.80
	<b>Overall ECL</b>		<b>78</b>	<b>52.00</b>	<b>2.90</b>	<b>4.92</b>	<b>-41.06</b>	<b>21.24</b>	<b>33.32</b>	<b>-36.25</b>
2	BCCL	Top 35	0	3.49	0.00	0.00		0.00	0.00	
		Others	9	13.31	1.71	1.89	-9.52	12.29	12.44	-1.21
		Top 75	9	16.80	1.71	1.89	-9.52	12.29	12.44	-1.21
		Rest	21	16.69	1.14	0.82	39.02	7.80	6.20	25.81
	<b>Overall BCCL</b>		<b>30</b>	<b>30.00</b>	<b>2.85</b>	<b>2.71</b>	<b>5.17</b>	<b>20.09</b>	<b>18.64</b>	<b>7.78</b>
3	CCL	Top 35	4	51.00	3.35	3.53	-5.10	27.19	18.09	50.30
		Others	7	9.40	0.80	1.31	-38.93	6.68	11.16	-40.17
		Top 75	11	60.40	4.15	4.84	-14.26	33.87	29.25	15.78
		Rest	31	13.60	2.26	1.58	43.04	8.91	9.98	-10.69
	<b>Overall CCL</b>		<b>42</b>	<b>74.00</b>	<b>6.41</b>	<b>6.42</b>	<b>-0.16</b>	<b>42.78</b>	<b>39.23</b>	<b>9.05</b>
4	MCL	Top 35	14	161.50	16.75	14.14	18.46	116.45	87.99	32.34
		Others	1	1.00	0.10	0.22	-54.55	0.67	1.23	-45.53
		Top 75	15	162.50	16.85	14.36	17.34	117.12	89.22	31.27
		Rest	4	0.50	0.00	0.00		0.00	0.00	
	<b>Overall MCL</b>		<b>19</b>	<b>163.00</b>	<b>16.85</b>	<b>14.36</b>	<b>17.34</b>	<b>117.12</b>	<b>89.22</b>	<b>31.27</b>
5	NCL	Top 35	8	114.97	10.74	9.20	16.74	83.14	76.31	8.95
		Others	2	4.03	0.50	0.44	13.64	3.21	3.27	-1.83
		Top 75	10	119.00	11.24	9.64	16.60	86.35	79.58	8.51
		Rest	0	0.00	0.00	0.00		0.01	0.00	
	<b>Overall NCL</b>		<b>10</b>	<b>119.00</b>	<b>11.24</b>	<b>9.64</b>	<b>16.60</b>	<b>86.36</b>	<b>79.57</b>	<b>8.53</b>
6	SECL	Top 35	4	132.50	10.83	11.17	-3.04	66.90	73.04	-8.41
		Others	10	19.29	1.68	1.31	28.24	11.34	11.00	3.09
		Top 75	14	151.79	12.51	12.48	0.24	78.24	84.04	-6.90
		Rest	56	20.21	1.65	1.45	13.79	13.60	11.13	22.19
	<b>Overall SECL</b>		<b>70</b>	<b>172.00</b>	<b>14.16</b>	<b>13.93</b>	<b>1.65</b>	<b>91.84</b>	<b>95.17</b>	<b>-3.50</b>
7	WCL	Top 35	3	6.30	1.14	1.66	-31.33	7.93	7.62	4.04
		Others	9	29.08	2.11	2.93	-27.99	13.24	13.67	-3.17
		Top 75	12	35.38	3.25	4.59	-29.19	21.17	21.29	-0.59
		Rest	48	24.62	2.56	1.41	81.56	13.05	11.76	10.93
	<b>Overall WCL</b>		<b>60</b>	<b>60.00</b>	<b>5.81</b>	<b>6.00</b>	<b>-3.17</b>	<b>34.21</b>	<b>33.05</b>	<b>3.51</b>
8	CIL	Top 35	35	498.56	44.19	42.56	3.83	311.29	281.02	10.77
		Others	40	79.91	7.27	8.64	-15.86	50.71	56.66	-10.50
		Top 75	75	578.47	51.46	51.20	0.51	362.00	337.68	7.20
		Rest of mines	234	91.53	8.76	6.82	28.45	51.64	50.74	1.78
	<b>Overall CIL</b>		<b>309</b>	<b>670.00</b>	<b>60.22</b>	<b>58.02</b>	<b>3.79</b>	<b>413.64</b>	<b>388.42</b>	<b>6.49</b>

Top 75 = Top 35 + others mines including in top 75 mines

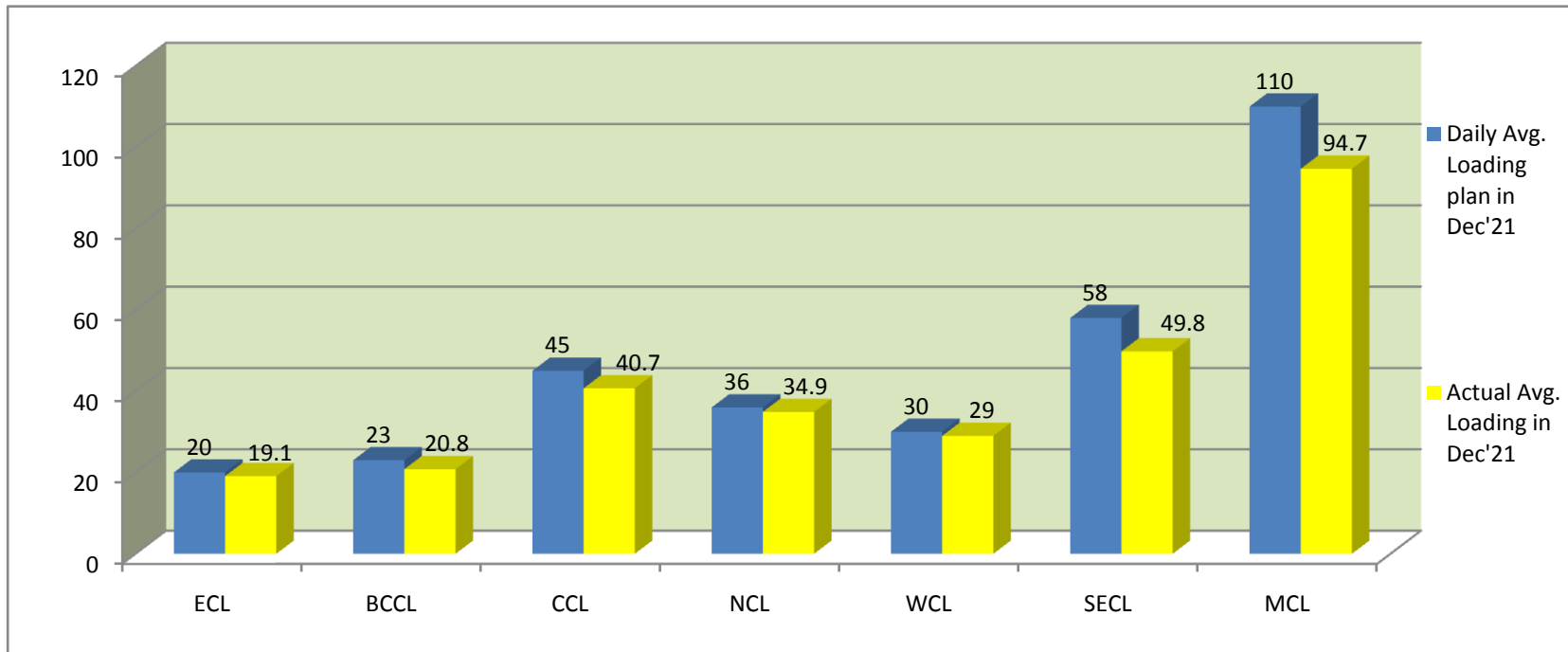
Rest of Mines = other than top 75

overall Mines = Top 75 + rest of mines



**COMPANY-WISE MOVEMENT OF RAKES FOR OVERALL SECTOR PER DAY IN DEC'21(Provisional)**

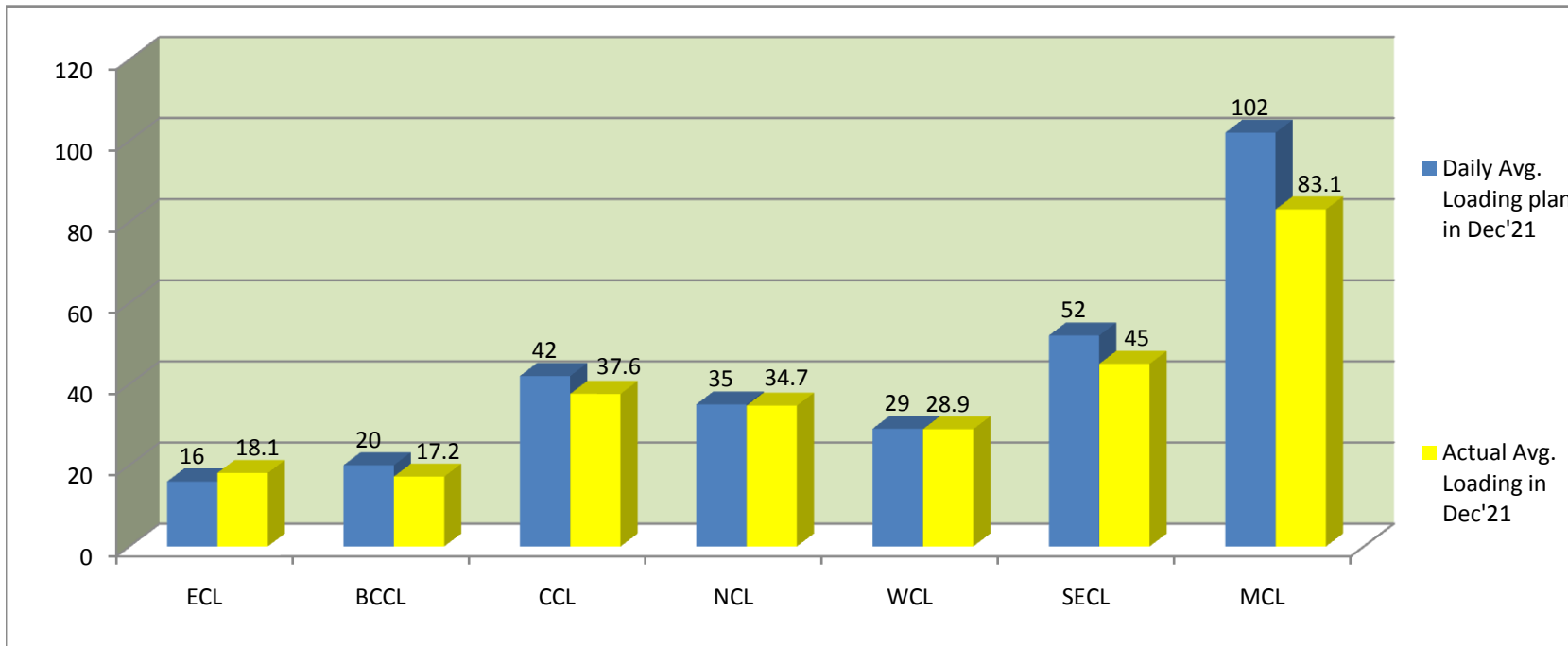
COMPANY	Daily Avg. Loading plan in Dec'21	Actual Avg. Loading in Dec'21	Achievemnt (%)	Actual Avg. Loading in Dec'20	Monthly Growth%
ECL	20	19.1	96	18.9	1
BCCL	23	20.8	90	11.6	79
CCL	45	40.7	90	44.1	-8
NCL	36	34.9	97	28.8	21
WCL	30	29	97	26.9	8
SECL	58	49.8	86	48.2	3
MCL	110	94.7	86	78	21
Total	322	289	90	256.5	13



It is important to note here that loading has increased in the Q3 due to high demand of coal from Power sector.

**COMPANY-WISE MOVEMENT OF RAKES FOR POWER SECTOR PER DAY IN DEC'21(Provisional)**

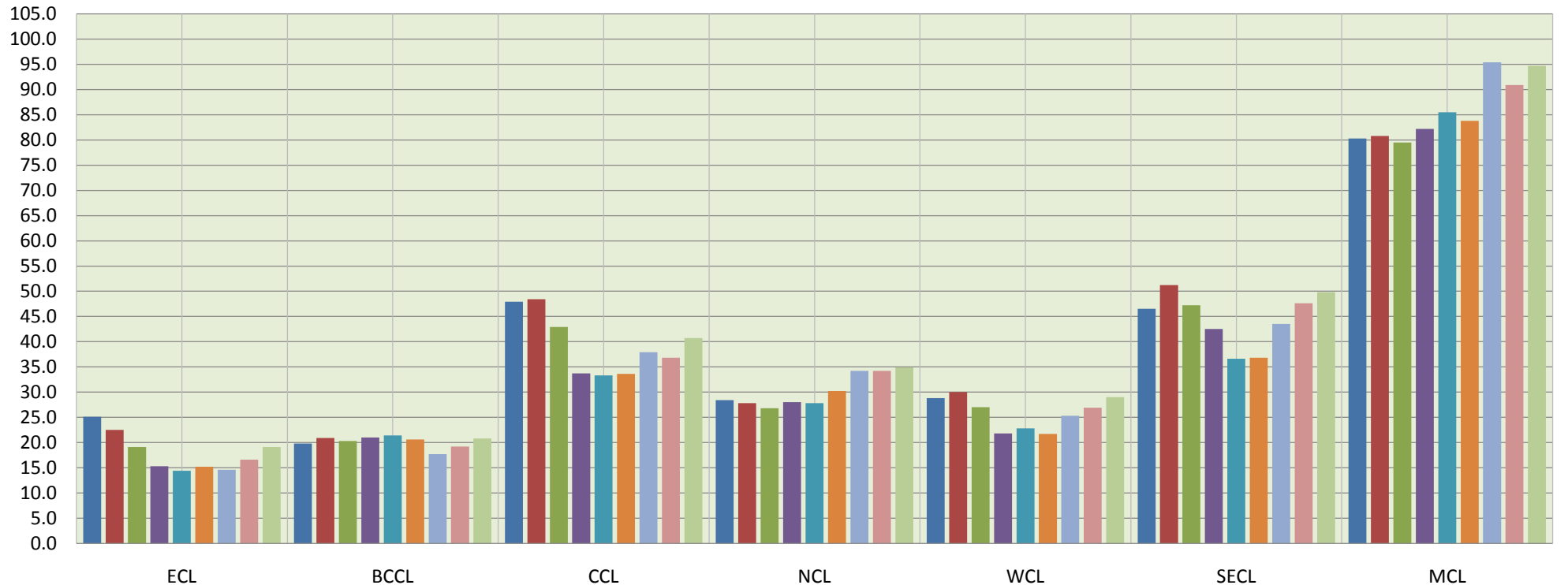
COMPANY	Daily Avg. Loading plan in Dec'21	Actual Avg. Loading in Dec'21	Achievemnt (%)	Actual Avg. Loading in Dec'20	Monthly Growth%
ECL	16	18.1	113	15.3	18
BCCL	20	17.2	86	8.3	107
CCL	42	37.6	90	40.7	-8
NCL	35	34.7	99	26.4	31
WCL	29	28.9	100	25.6	13
SECL	52	45	87	38.5	17
MCL	102	83.1	81	60.6	37
<b>Total</b>	<b>296</b>	<b>264.6</b>	<b>89</b>	<b>215.4</b>	<b>23</b>



**COMPANY-WISE MOVEMENT OF RAKES FOR ALL SECTOR PER DAY DURING FY 2021-22(Provisional)**

COMPANY	Avg. Loading in April'21	Avg. Loading in May'21	Avg. Loading in June'21	Avg. Loading in July'21	Avg. Loading in Aug'21	Avg. Loading in Sept'21	Avg. Loading in Oct'21	Avg. Loading in Nov'21	Avg. Loading in Dec'21
ECL	25.1	22.5	19	15.3	14.4	15.2	14.6	16.6	19.1
BCCL	19.8	20.9	20	21	21.4	20.6	17.7	19.2	20.8
CCL	47.9	48.4	43	33.7	33.3	33.6	37.9	36.8	40.7
NCL	28.4	27.8	27	28	27.8	30.2	34.2	34.2	34.9
WCL	28.8	30	27	21.8	22.8	21.7	25.3	26.9	29
SECL	46.5	51.2	47	42.5	36.6	36.8	43.5	47.6	49.8
MCL	80.3	80.8	80	82.2	85.5	83.8	95.4	90.9	94.7
<b>Total</b>	<b>276.8</b>	<b>281.6</b>	<b>262.8</b>	<b>244.5</b>	<b>241.8</b>	<b>241.9</b>	<b>268.6</b>	<b>272.2</b>	<b>289</b>

**Actual Rakes Loading Status (All Sector)**



- Avg. Loading in April'21 ■ Avg. Loading in May'21 ■ Avg. Loading in June'21 ■ Avg. Loading in July'21 ■ Avg. Loading in Aug'21
- Avg. Loading in Sept'21 ■ Avg. Loading in Oct'21 ■ Avg. Loading in Nov'21 ■ Avg. Loading in Dec'21

**COMPANY-WISE MOVEMENT OF RAKES FOR POWER SECTOR PER DAY DURING FY 2021-22(Provisional)**

COMPANY	Avg. Loading in April'21	Avg. Loading in May'21	Avg. Loading in June'21	Avg. Loading in July'21	Avg. Loading in Aug'21	Avg. Loading in Sept'21	Avg. Loading in Oct'21	Avg. Loading in Nov'21	Avg. Loading in Dec'21
ECL	21.10	18.7	16.5	13.7	12.5	15.2	14.5	15.6	18.1
BCCL	17.10	18.1	17.5	17.4	18.5	17.4	14.8	15.7	17.2
CCL	46.20	45.6	39.3	32	30.4	31.6	36.3	34	37.6
NCL	26.60	26.6	24.5	25.5	25.5	29.2	33.9	34	34.7
WCL	27.90	29.1	25.3	20.8	22.3	21.6	25.3	26.9	28.9
SECL	40.10	44.2	39.3	36	32.9	33.5	41.5	42.7	45
MCL	64.40	62.5	59.4	65.2	68.7	72.8	88.3	79.2	83.1
<b>Total</b>	<b>243.4</b>	<b>244.8</b>	<b>221.8</b>	<b>210.6</b>	<b>210.8</b>	<b>221.3</b>	<b>254.6</b>	<b>248.1</b>	<b>264.6</b>

**Actual Rakes Loading Status (Power)**

