

**Monthly Coal Statistics for Sept'2021(Provisional)**

**Coal Production**

The overall coal production has been 51.70 MT in the month of Sept 2021 as compared to 39.48 MT in Sept 2019 and registering a growth of 30.93%. Further, in first half of FY 2021-22. Coal sector and CIL have performed better than FY 2020-21 & FY 2019-20. It has been also observed that CIL produced 249.82 MT of coal upto Sept 2021 which is 37.29% of annual production target of 670 MT and to achieve annual production target and meet the rise in demand, CIL has to ramp up the production from Oct 2021 onward.

*Fig. in MT*

Sl No	Subs	Monthly Target	Production during Sept					Coal Production upto Sept			
			FY 22	Achmt.(%)	FY 21	FY 20	Growth (%) (FY22-FY20)	FY 22	FY 21	FY 20	Growth (%) (FY22-FY20)
1	ECL	3.15	2.11	66.98	2.79	2.81	-24.86	14.31	18.04	20.84	-31.34
2	BCCL	2.15	2.12	98.60	2.01	1.74	21.98	12.37	10.09	11.69	5.84
3	CCL	4.59	4.08	88.89	4.83	3.27	24.62	25.36	20.27	22.61	12.18
4	NCL	9.31	9.56	102.69	9.26	7.67	24.72	53.44	53.54	51.00	4.78
5	WCL	2.54	2.53	99.61	2.51	1.75	44.99	18.47	16.50	17.45	5.85
6	SECL	12.63	8.02	63.50	8.50	7.24	10.82	55.12	53.69	60.72	-9.22
7	MCL	10.10	12.23	121.09	10.58	6.28	94.78	70.75	63.87	56.51	25.19
	<b>CIL</b>	<b>44.47</b>	<b>40.65</b>	91.41	<b>40.48</b>	<b>30.75</b>	<b>32.21</b>	<b>249.82</b>	<b>236.00</b>	<b>240.82</b>	3.74
9	SCCL	4.86	4.54	93.42	3.34	4.24	7.17	29.94	18.13	30.51	-1.87
10	Captives		6.50		4.08	4.50	44.58	35.88	28.45	27.79	29.13
	<b>Grand Total</b>		<b>51.70</b>		<b>47.90</b>	<b>39.48</b>	<b>30.93</b>	<b>315.64</b>	<b>282.58</b>	<b>299.11</b>	<b>5.53</b>

Front Runner  
 Laggard  
 Mediocre/Aspirant

### Coal Despatch

The overall coal Despatch has been 59.80 MT in the month of Sept 2021 as compared to 54.63 MT and 44.36 MT in Sept 2020 and Sept 2019 respectively. However, it has been observed that CIL despatched 307.62 MT of coal upto Sept 2021 which is 41.57 % of annual despatch target of 740 MT. Surge in Power demand has been observed since Aug 2021 (23.7% and 9.3% in Sept), In view of the current scenario, the coal stock of only 7.83MT has been liquidated by CIL. 42.01 MT of stock is available with CIL as on 30th Sept 2021.

Sl No	Subs	Monthly Target	Coal Despatch During Sept					Coal Despatch Upto Sept			
			FY 22	Achmt.(%)	FY 21	FY 20	Growth (%) (FY22-FY20)	FY 22	FY 21	FY 20	Growth (%) (FY22-FY20)
1	ECL	3.30	2.57	77.88	2.88	2.80	-8.05	18.60	19.07	22.50	-17.34
2	BCCL	3.00	2.53	84.33	2.44	2.02	25.25	15.53	10.42	13.62	14.01
3	CCL	6.60	5.04	76.36	5.88	4.43	13.77	33.66	26.78	33.10	1.69
4	NCL	10.50	9.94	94.67	9.22	7.95	25.09	57.55	49.69	51.10	12.63
5	WCL	5.25	4.04	76.95	3.77	2.36	71.55	28.64	19.06	23.51	21.80
6	SECL	13.50	10.50	77.78	10.40	8.39	25.15	72.79	61.69	67.73	7.47
7	MCL	15.00	13.69	91.27	12.01	7.35	86.31	80.85	67.78	63.96	26.41
	<b>CIL</b>	<b>57.15</b>	<b>48.30</b>	<b>84.51</b>	<b>46.61</b>	<b>35.32</b>	<b>36.73</b>	<b>307.62</b>	<b>254.49</b>	<b>275.72</b>	<b>11.57</b>
9	SCCL	4.96	4.58	92.34	3.68	4.36	5.14	31.29	17.85	30.51	2.57
10	Captives		6.92		4.34	4.68	47.91	38.56	29.45	28.56	35.00
	<b>Grand Total</b>		<b>59.80</b>		<b>54.63</b>	<b>44.36</b>	<b>34.81</b>	<b>377.47</b>	<b>301.79</b>	<b>334.79</b>	<b>12.75</b>

	Front Runner
	Laggard
	Mediocre/Aspirant

The Power Sector Despatch has been 50.55 MT in the month of Sept 2021 as compared to 43.43 MT and 36.53 MT in Sept 2020 and Sept 2019 respectively. However, it has been observed that upto Set 2021, there are other sector like cement, Steel and Spong Iron wherein there is a negative growth in coal despatch as compared FY 2019. Even in case of Steel and Spong Iron, there was more coal despatch in FY 2020 despite being a

### Coal Despatch to Different Sectors

Fig. in MT

Sectors	Coal Despatch During Sept				Coal Despatch Upto Sept			Growth (%) (FY22-FY20)
	FY 22	FY 21	FY 20	Growth (%) (FY22-FY20)	FY 22	FY 21	FY 20	
Power	50.55	43.43	36.53	38.40	307.42	238.62	266.98	15.15
CPP	4.28	3.18	2.80	53.04	20.67	21.37	25.18	-17.90
Steel	0.63	0.67	0.95	-33.33	3.47	4.48	5.37	-35.34
Cement	0.47	0.52	0.47	0.00	3.48	2.68	4.29	-18.97
Sponge Iron	0.56	0.65	0.56	0.18	3.61	4.41	4.99	-27.56
Others	3.30	6.19	3.05	8.33	38.81	30.24	27.99	38.68
<b>Total</b>	<b>59.80</b>	<b>54.63</b>	<b>44.36</b>	<b>34.83</b>	<b>377.47</b>	<b>301.79</b>	<b>334.79</b>	<b>12.75</b>

### Lignite Production

Fig. in MT

Sl No	Company	Production during Sept				Production upto Sept			
		FY 22	FY 21	FY 20	Growth (%) (FY22-FY20)	FY 22	FY 21	FY 20	Growth (%) (FY22-FY20)
1	NLCIL	2.16	1.34	2.15	0.33	11.61	8.72	10.57	9.87
2	GMDCL	0.49	0.30	0.29	70.14	3.83	2.02	3.43	11.48
3	GIPCL	0.00	0.00	0.00		0.80	1.36	1.25	-36.14
4	RSMML	0.14	0.04	0.02	545.45	0.91	0.20	0.34	163.37
5	BLMCL	0.52	0.61	0.41	27.34	2.80	2.68	2.60	7.53
6	GHCL	0.00	0.00	0.00		0.04	0.00	0.05	-18.37
7	VS Lignite	0.10	0.09	0.00		0.47	0.51	0.29	64.34
8	GSPL	0.09				0.69			
<b>Grand Total</b>		<b>3.50</b>	<b>2.37</b>	<b>2.87</b>	<b>21.90</b>	<b>21.14</b>	<b>15.49</b>	<b>18.53</b>	<b>14.06</b>

### Lignite Despatch

Fig. in MT

Sl No	Company	Despatch During Sept				Despatch upto Sept			
		FY 22	FY 21	FY 20	Growth (%) (FY22-FY20)	FY 22	FY 21	FY 20	Growth (%) (FY22-FY20)
	NLCIL	2.24	1.24	2.02	10.69	13.99	9.59	12.79	9.35
2	GMDCL	0.49	0.30	0.29	70.14	3.83	2.02	3.43	11.48
3	GIPCL	0.00	0.00	0.00		0.80	1.36	1.25	-36.14
4	RSMML	0.14	0.04	0.02	545.45	0.91	0.20	0.34	163.37
5	BLMCL	0.52	0.65	0.42	22.86	2.98	3.01	2.72	9.51
6	GHCL	0.01	0.00	0.01	-28.57	0.03	0.01	0.03	-11.76
7	VS Lignite	0.08	0.08	0.00		0.41	0.48	0.31	31.85
8	GSPL	0.11				0.76			
<b>Grand Total</b>		<b>3.57</b>	<b>2.31</b>	<b>2.76</b>	<b>29.63</b>	<b>23.70</b>	<b>16.67</b>	<b>20.89</b>	<b>13.47</b>

### Power Generation in Sept 2021

Qty. (MU)

Source-wise	Sep-21	% share	Sep-20	Sep-19	Growth (%) (FY21-FY19)
Coal	75691	64.51	75492.00	66771	13.36
Lignite	2271	1.94	1806.00	2106	7.83
Hydro	19664	16.76	20689.00	21522	-8.63
Nuclear	3534	3.01	3506.00	3300	7.09
Gas, Naptha &	2875	2.45	4202.00	3957	-27.34

<b>RES (Wind, Solar, Biomass)</b>	13297	11.33	10213.00	9656	37.71
<b>Total</b>	<b>117332</b>	100.00	<b>115908</b>	<b>107312</b>	<b>9.34</b>

The coal based Power generation in the month of Sept 2021 has been 75691 MU in comparison to 85736 MU in Aug 2021 and registered a negative growth of 11.71% due to heavy rainfall in the Sept 2021. However, the share of Coal based power generation has increased by 13.36 % in the month of Sept 2021 in comparison to Sept 2019 . The overall power generation in Sept 2021 has been 9.34% higher than the power generated in Sept 2019.

**Despatch of Coal By CIL**

Sectors	Coal Despatch during Sept				Coal Production Upto Sept			
	FY 22	FY 21	FY 20	Growth (%) (FY22-FY20)	FY 22	FY 21	FY 20	Growth (%) (FY22-FY20)
Power	40.38	36.48	28.77	40.37	245.58	197.77	217.39	12.97
CPP	4.09	2.95	2.59	57.98	19.14	20.42	23.45	-18.37
Steel	0.20	0.19	0.30	-32.20	1.10	0.98	1.09	0.73
Cement	0.21	0.35	0.32	-33.54	1.81	1.88	2.81	-35.68
Sponge Iron	0.54	0.65	0.56	-3.40	3.53	4.40	4.92	-28.27
Others	2.88	6.00	2.79	3.08	36.47	29.04	26.06	39.96
<b>Total</b>	<b>48.30</b>	<b>46.61</b>	<b>35.32</b>	<b>36.75</b>	<b>307.63</b>	<b>254.49</b>	<b>275.72</b>	<b>11.57</b>

**Despatch of Coal By SCCL**

Sectors	Coal Despatch during Sept				Coal Production Upto Sept			
	FY 22	FY 21	FY 20	Growth (%) (FY22-FY20)	FY 22	FY 21	FY 20	Growth (%) (FY22-FY20)
Power	3.77	3.12	3.78	-0.26	25.93	15.15	25.62	1.19
CPP	0.19	0.23	0.21	-8.13	1.53	0.96	1.73	-11.56
Steel								
Cement	0.18	0.14	0.12	55.65	1.41	0.59	1.21	16.16
Sponge Iron	0.02	0.00	0.00	1000.00	0.08	0.01	0.06	26.56
Others	0.42	0.42	0.25	67.19	2.34	2.34	1.88	24.83
<b>Total</b>	<b>4.58</b>	<b>3.68</b>	<b>4.36</b>	<b>5.21</b>	<b>31.29</b>	<b>17.85</b>	<b>30.51</b>	<b>2.57</b>

**Coal Despatch to Different Sectors by Captive and Others**

Sectors	Coal Despatch during Sept				Coal Production Upto Sept			
	FY 22	FY 21	FY 20	Growth (%) (FY22-FY20)	FY 22	FY 21	FY 20	Growth (%) (FY22-FY20)
Power	6.41	3.84	3.98	60.83	35.92	25.70	23.98	49.80
CPP								
Steel	0.43	0.48	0.65	-33.84	2.37	3.50	4.28	-44.54
Cement	0.08	0.02	0.04	102.44	0.26	0.20	0.26	-2.27
Sponge Iron								
Others	0.00	0.00	0.00		0.01	0.05	0.04	-80.49
<b>Total</b>	<b>6.92</b>	<b>4.34</b>	<b>4.68</b>	<b>47.91</b>	<b>38.56</b>	<b>29.45</b>	<b>28.56</b>	<b>35.00</b>

**Top 35 Mines Production during Sept 2021(provisional)**

Sr. No	Subsidiary	Mines	Annual Target (MT)	Prod. upto Aug 2021 (MT)	Asking Rate for Sept 2021(MT)	Prod. during Sept 2021 (MT)	Prod. upto Sept 2021 (MT)	Achievement
1.00	ECL	Rajmahal	17.50	2.72	2.09	0.51	3.23	24.24%
2.00	ECL	Sonepur Bazari	11.30	2.63	1.23	0.47	3.10	38.58%
3.00	CCL	Ashoka	13.00	4.44	1.21	0.75	5.19	61.84%
4.00	CCL	Amarpali	20.00	5.48	2.05	1.15	6.63	56.08%
5.00	CCL	AKK	4.50	0.76	0.53	0.23	0.99	42.63%
6.00	CCL	Magadh	10.00	2.84	1.01	0.65	3.50	64.47%
7.00	MCL	Bhubaneswari	28.00	12.70	2.17	2.24	14.94	103.28%
8.00	MCL	Lakhanpur	21.00	8.96	1.70	1.76	10.72	103.41%
9.00	MCL	Bharatpur	10.00	2.51	1.06	0.59	3.10	55.23%
10.00	MCL	Lingaraj	14.00	4.66	1.32	1.04	5.71	78.90%
11.00	MCL	Samaleswari	6.00	1.34	0.66	0.41	1.75	62.48%
12.00	MCL	Kulda	16.00	6.75	1.31	1.47	8.21	111.97%
13.00	MCL	Kaniha	9.00	2.82	0.87	0.77	3.60	88.56%
14.00	MCL	Hingula	7.50	2.19	0.75	0.54	2.73	71.35%
15.00	MCL	Ananta	13.00	4.52	1.20	0.92	5.44	76.92%
16.00	MCL	Jagannath	7.00	2.26	0.67	0.48	2.73	70.93%
17.00	MCL	Belpahar	7.00	2.09	0.70	0.16	2.24	22.51%
18.00	MCL	Lajkura	4.50	1.58	0.41	0.31	1.89	74.92%
19.00	MCL	Balram	6.50	1.75	0.67	0.50	2.26	75.14%
20.00	MCL	Garjanbahal	12.00	3.72	1.17	0.94	4.66	80.18%
21.00	NCL	Nigahi	21.00	8.39	1.78	1.79	10.17	100.12%
22.00	NCL	Jayant	22.00	8.95	1.85	1.92	10.87	103.99%
23.00	NCL	Dudhichua	22.00	7.43	2.06	1.45	8.88	70.43%
24.00	NCL	Amlohri	14.00	3.68	1.46	1.08	4.76	73.98%
25.00	NCL	Khadia	14.00	5.31	1.23	1.12	6.43	91.06%
26.00	NCL	Bina	9.50	3.27	0.88	0.77	4.04	87.78%
27.00	NCL	Krishnashila	7.00	2.84	0.59	0.64	3.48	109.01%
28.00	NCL	Block B	5.47	2.45	0.43	0.51	2.96	118.94%
29.00	SECL	Gevra	47.60	14.04	4.75	2.31	16.35	48.68%
30.00	SECL	Dipka	35.00	10.08	3.53	1.77	11.85	50.31%
31.00	SECL	Kushmunda	45.00	9.68	5.00	1.43	11.11	28.59%
32.00	SECL	Manikpur	4.90	2.04	0.41	0.40	2.44	99.72%
33.00	WCL	Niljai Deep	4.30	0.90	0.48	0.35	1.25	72.34%
34.00	WCL	Mungoli	4.00	0.98	0.43	0.10	1.09	23.90%
35.00	WCL	Penganga	6.30	1.89	0.62	0.34	2.23	54.05%
<b>Total</b>			<b>499.87</b>	<b>158.66</b>	<b>48.28</b>	<b>31.87</b>	<b>190.53</b>	<b>66.01%</b>

Particulars	No. of Mines
Mines produced more than 100%	7
Mines produced more than 80% , but less than 100%	5
Mines produced more than 50% , but less than 80%	16
Mines produced less than 50%	7

Note: Asking Rate has been derived by assuming even spread of mining activity across the months. However, the mining operations has seasonality effect.

**Top 35 Mines-wise OBR during Sept 2021(provisional)**

S.No	Subsidiary	Mines	Annual Target (M.Cum)	OBR upto Aug 2021 (M.Cum)	Asking Rate for Sept 2021	OBR during Sept 2021 (M.Cum)	OBR upto Sept 2021 (M.Cum)	Achievement
1	ECL	Rajmahal	33.20	6.30	3.81	1.48	7.78	38.78%
2	ECL	Sonepur Bazar	71.40	24.69	6.61	4.68	29.36	70.74%
3	CCL	Ashoka	20.00	7.18	1.81	0.93	8.11	51.07%
4	CCL	Amarpali	25.00	6.21	2.66	0.97	7.18	36.42%
5	CCL	AKK	7.00	2.89	0.58	0.55	3.44	95.17%
6	CCL	Magadh	15.00	5.42	1.36	1.00	6.42	73.88%
7	MCL	Bhubaneswari	18.00	6.07	1.69	1.04	7.11	61.68%
8	MCL	Lakhanpur	40.00	13.49	3.75	2.76	16.25	73.52%
9	MCL	Bharatpur	12.00	4.88	1.01	0.84	5.72	83.29%
10	MCL	Lingaraj	14.00	3.89	1.43	1.10	5.00	77.15%
11	MCL	Samaleswari	9.50	3.76	0.81	0.73	4.48	89.38%
12	MCL	Kulda	18.00	6.60	1.61	1.22	7.83	75.89%
13	MCL	Kaniha	6.00	2.87	0.44	0.40	3.27	89.79%
14	MCL	Hingula	12.00	7.58	0.63	1.75	9.32	278.85%
15	MCL	Ananta	20.00	9.18	1.53	1.84	11.02	119.95%
16	MCL	Jagannath	7.00	2.11	0.69	0.45	2.57	65.43%
17	MCL	Belpahar	8.00	0.87	1.01	0.49	1.36	48.46%
18	MCL	Lajkura	10.00	4.27	0.81	0.93	5.20	114.92%
19	MCL	Balram	16.00	5.83	1.44	0.94	6.77	65.65%
20	MCL	Garjanbahal	9.00	3.52	0.78	0.71	4.23	91.47%
21	NCL	Nigahi	78.00	24.23	7.61	3.86	28.09	50.71%
22	NCL	Jayant	48.50	19.23	4.14	3.15	22.39	76.16%
23	NCL	Dudhichua	68.50	20.04	6.86	4.08	24.12	59.50%
24	NCL	Amlohri	56.50	21.25	4.99	4.11	25.36	82.38%
25	NCL	Khadia	50.50	19.66	4.36	4.20	23.87	96.35%
26	NCL	Bina	38.90	16.28	3.20	3.47	19.75	108.38%
27	NCL	Krishnashila	17.50	5.30	1.73	0.94	6.24	54.26%
28	NCL	Block B	17.00	7.31	1.37	1.55	8.86	112.83%
29	SECL	Gevra	65.00	19.09	6.50	3.04	22.14	46.86%
30	SECL	Dipka	36.00	8.30	3.92	1.64	9.93	41.71%
31	SECL	Kushmunda	50.00	14.52	5.02	1.93	16.46	38.52%
32	SECL	Manikpur	13.00	4.71	1.17	0.72	5.43	61.06%
33	WCL	Niljai Deep	30.00	13.58	2.32	2.20	15.78	94.77%
34	WCL	Mungoli	15.50	7.90	1.08	0.88	8.78	81.58%
35	WCL	Penganga	30.00	7.33	3.21	1.23	8.55	38.20%
<b>Total</b>			<b>986.00</b>	<b>336.35</b>	<b>91.93</b>	<b>61.80</b>	<b>398.15</b>	<b>67.22%</b>

Particulars	No. of Mines
Mines performed more than 100%	5
Mines performed more than 80% , but less than 100%	9
Mines performed more than 50% , but less than 80%	14
Mines performed less than 50%	7

## Coal Production in mines of all Subsidiaries of CIL (provisional data)

Fig. in MT

Srl No	Subs	Types of Mines	No of Mines	Annual Target (MT)	During Sept			Upto Sept		
					FY 22	FY 20	Growth %) M-O-M	FY 22	FY 20	Growth %) Y-O-Y
1	ECL	Top 35	2	28.80	0.98	1.53	-35.95	6.33	10.96	-42.24
		Others	2	3.80	0.45	0.33	35.54	2.26	2.36	-4.24
		Top 75	4	32.60	1.43	1.86	-23.20	8.59	13.32	-35.51
		Rest	74	19.40	0.68	0.95	-28.27	5.72	7.52	-23.94
	<b>Overall ECL</b>	<b>78</b>	<b>52.00</b>	<b>2.11</b>	<b>2.81</b>	<b>-24.91</b>	<b>14.31</b>	<b>20.84</b>	<b>-31.33</b>	
2	BCCL	Top 35	0	3.49	0.00	0.00		0.00	0.00	
		Others	9	13.31	1.30	1.22	6.56	7.54	7.62	-1.05
		Top 75	9	16.80	1.30	1.22	6.56	7.54	7.62	-1.05
		Rest	21	16.69	0.82	0.52	57.69	4.83	4.07	18.67
	<b>Overall BCCL</b>	<b>30</b>	<b>30.00</b>	<b>2.12</b>	<b>1.74</b>	<b>21.84</b>	<b>12.37</b>	<b>11.69</b>	<b>5.82</b>	
3	CCL	Top 35	4	51.00	2.78	1.19	133.61	16.31	8.91	83.05
		Others	7	9.40	0.59	0.88	-32.95	4.73	5.82	-18.73
		Top 75	11	60.40	3.37	2.07	62.80	21.04	14.73	42.84
		Rest	31	13.60	0.71	1.20	-40.83	4.32	7.88	-45.18
	<b>Overall CCL</b>	<b>42</b>	<b>74.00</b>	<b>4.08</b>	<b>3.27</b>	<b>24.77</b>	<b>25.36</b>	<b>22.61</b>	<b>12.16</b>	
4	MCL	Top 35	14	161.50	12.12	6.07	99.67	70.10	55.21	26.97
		Others	1	1.00	0.10	0.15	-33.33	0.44	0.89	-50.56
		Top 75	15	162.50	12.22	6.22	96.46	70.54	56.10	25.74
		Rest	4	0.50	0.01	0.06	-83.33	0.21	0.41	-48.78
	<b>Overall MCL</b>	<b>19</b>	<b>163.00</b>	<b>12.23</b>	<b>6.28</b>	<b>94.75</b>	<b>70.75</b>	<b>56.51</b>	<b>25.20</b>	
5	NCL	Top 35	8	114.97	9.28	7.35	26.26	51.58	48.95	5.37
		Others	2	4.03	0.29	0.32	-10.94	1.86	2.05	-9.27
		Top 75	10	119.00	9.57	7.67	24.71	53.44	51.00	4.78
		Rest	0	0.00	0.00	0.00		0.00	0.00	
	<b>Overall NCL</b>	<b>10</b>	<b>119.00</b>	<b>9.56</b>	<b>7.67</b>	<b>24.64</b>	<b>53.44</b>	<b>51.00</b>	<b>4.78</b>	
6	SECL	Top 35	4	132.50	5.92	5.43	9.02	39.21	45.82	-14.43
		Others	10	19.29	0.79	0.64	23.44	6.51	7.84	-16.96
		Top 75	14	151.79	6.71	6.07	10.54	45.72	53.66	-14.80
		Rest	56	20.21	1.31	1.17	11.97	9.40	7.06	33.14
	<b>Overall SECL</b>	<b>70</b>	<b>172.00</b>	<b>8.02</b>	<b>7.24</b>	<b>10.77</b>	<b>55.12</b>	<b>60.72</b>	<b>-9.22</b>	
7	WCL	Top 35	3	6.30	0.79	0.34	132.35	4.32	3.37	28.19
		Others	9	29.08	0.88	0.63	39.68	7.50	6.23	20.39
		Top 75	12	35.38	1.67	0.97	72.16	11.82	9.60	23.13
		Rest	48	24.62	0.86	0.78	10.26	6.65	7.85	-15.29
	<b>Overall WCL</b>	<b>60</b>	<b>60.00</b>	<b>2.53</b>	<b>1.75</b>	<b>44.57</b>	<b>18.47</b>	<b>17.45</b>	<b>5.85</b>	
8	CIL	Top 35	35	498.56	31.87	21.91	45.46	187.84	173.22	8.44
		Others	40	79.91	4.40	4.17	5.35	30.84	32.81	-6.00
		Top 75	75	578.47	36.27	26.08	39.04	218.68	206.03	6.14
		Rest of mines	234	91.53	4.39	4.67	-6.06	31.14	34.79	-10.49
	<b>Overall CIL</b>	<b>309</b>	<b>670.00</b>	<b>40.65</b>	<b>30.75</b>	<b>32.20</b>	<b>249.82</b>	<b>240.82</b>	<b>3.74</b>	

Top 75 = Top 35 + others mines including in top 75 mines

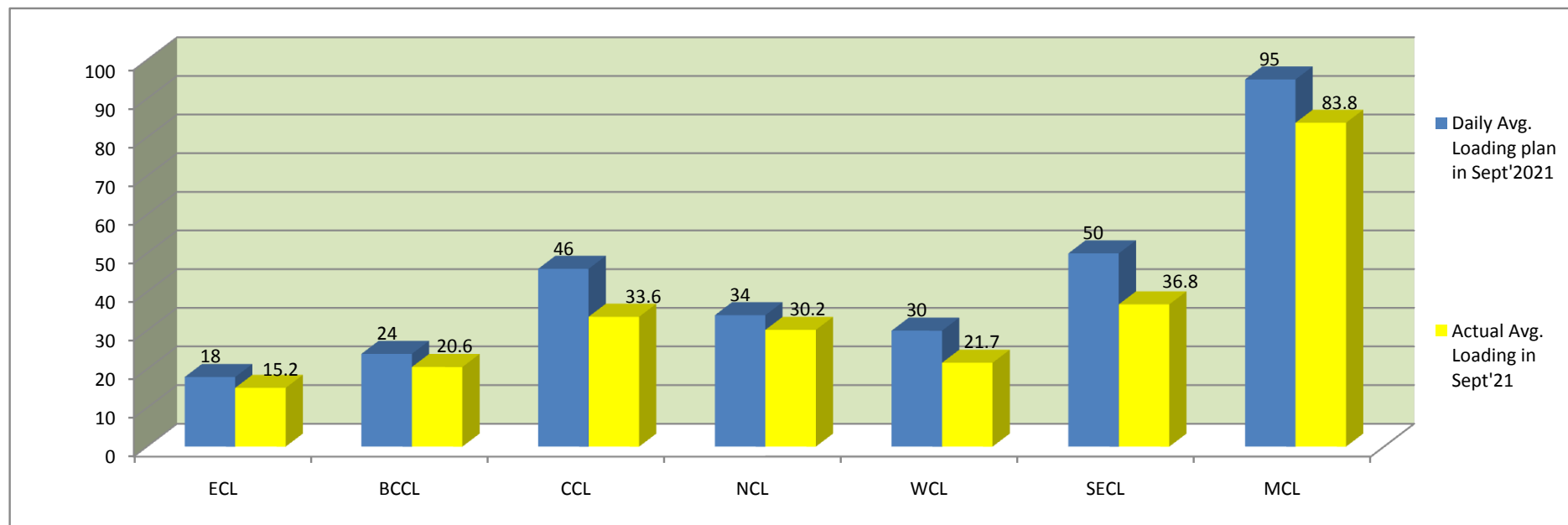
Rest of Mines = other than top 75

overall Mines = Top 75 + rest of mines



**COMPANY-WISE MOVEMENT OF RAKES FOR OVERALL SECTOR PER DAY IN SEPT'21(Provisional)**

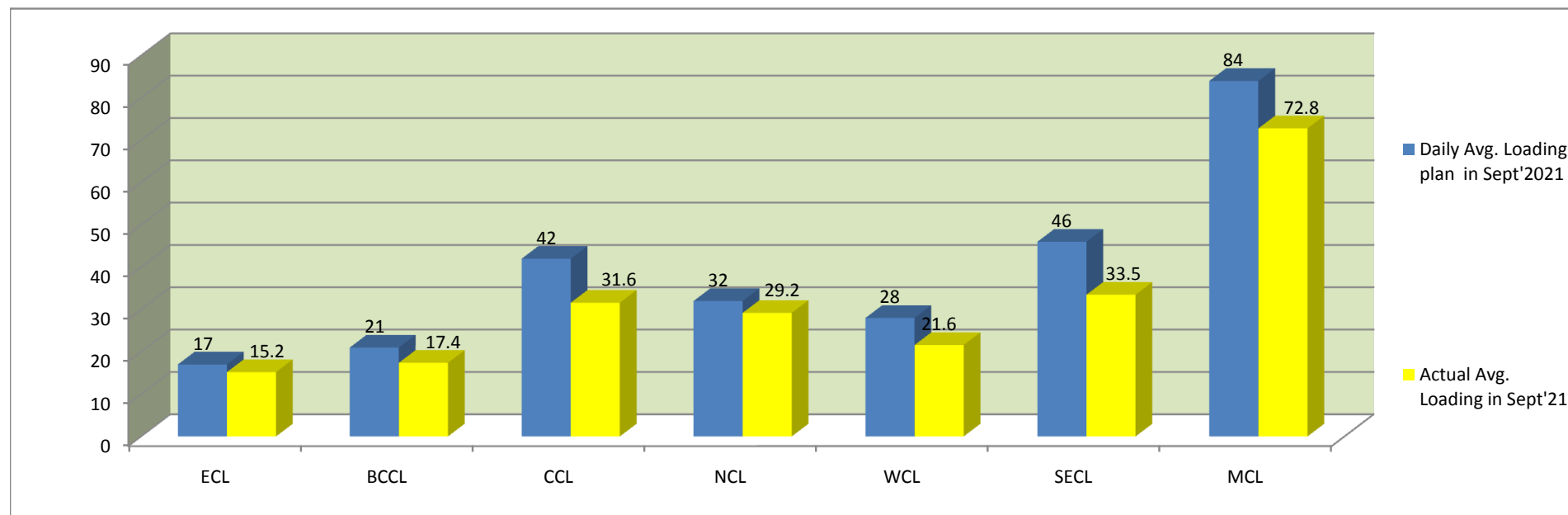
COMPAN	Daily Avg. Loading plan in Sept'2021	Actual Avg. Loading in Sept'21	Achievemnt (%)	Actual Avg. Loading in Sept'20	Monthly Growth%	Actual Avg. Loading in April'21	Actual Avg. Loading in May'21	Actual Avg. Loading in June'21	Actual Avg. Loading in July'21	Actual Avg. Loading in Aug'21
ECL	18	15.2	84	18.3	-17	25.1	22.5	19	15.3	14.4
BCCL	24	20.6	86	17.5	18	19.8	20.9	20	21	21.4
CCL	46	33.6	73	42.7	-21	47.9	48.4	43	33.7	33.3
NCL	34	30.2	89	29.3	3	28.4	27.8	27	28	27.8
WCL	30	21.7	72	22.4	-3	28.8	30	27	21.8	22.8
SECL	50	36.8	74	41.8	-12	46.5	51.2	47	42.5	36.6
MCL	95	83.8	88	69.2	21	80.3	80.8	80	82.2	85.5
Total	297	241.9	81	241.2	0	276.8	281.6	262.8	244.5	241.8



It is important to note here that loading has decreased in the month of Sept 21 as compared to earlier months due to rainy season. Overall loading achievement of NCL and MCL is 89% and 88% respectively.

**COMPANY-WISE MOVEMENT OF RAKES FOR POWER SECTOR PER DAY IN SEPT'21(Provisional)**

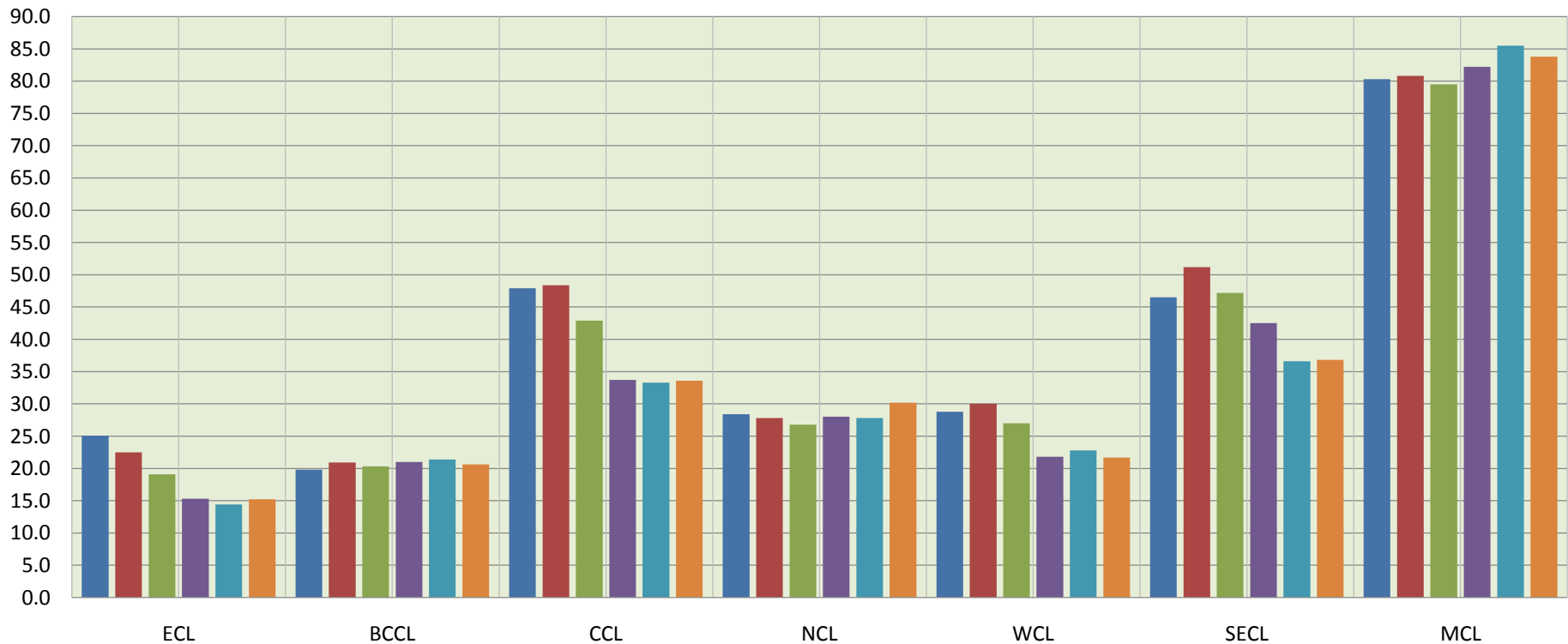
COMPAN	Daily Avg. Loading plan in Sept'2021	Actual Avg. Loading in Sept'21	Achievemnt (%)	Actual Avg. Loading in Sept'20	Monthly Growth%	Actual Avg. Loading in April'21	Actual Avg. Loading in May'21	Actual Avg. Loading in June'21	Actual Avg. Loading in July'21	Actual Avg. Loading in Aug'21
ECL	17	15.2	89	16.5	-8	21.10	18.7	16.5	13.7	12.5
BCCL	21	17.4	83	15.8	10	17.10	18.1	17.5	17.4	18.5
CCL	42	31.6	75	40	-21	46.20	45.6	39.3	32	30.4
NCL	32	29.2	91	27.5	6	26.60	26.6	24.5	25.5	25.5
WCL	28	21.6	77	21.6	0	27.90	29.1	25.3	20.8	22.3
SECL	46	33.5	73	34.3	-2	40.10	44.2	39.3	36	32.9
MCL	84	72.8	87	54.4	34	64.40	62.5	59.4	65.2	68.7
Total	270	221.3	82	210.1	5	243.40	244.8	221.8	210.6	210.8



**COMPANY-WISE MOVEMENT OF RAKES FOR ALL SECTOR PER DAY DURING FY 2021-22(Provisional)**

COMPANY	Avg. Loading in April'21	Avg. Loading in May'21	Avg. Loading in June'21	Avg. Loading in July'21	Avg. Loading in Aug'21	Avg. Loading in Sept'21
ECL	25.1	22.5	19	15.3	14.4	15.2
BCCL	19.8	20.9	20	21	21.4	20.6
CCL	47.9	48.4	43	33.7	33.3	33.6
NCL	28.4	27.8	27	28	27.8	30.2
WCL	28.8	30	27	21.8	22.8	21.7
SECL	46.5	51.2	47	42.5	36.6	36.8
MCL	80.3	80.8	80	82.2	85.5	83.8
<b>Total</b>	<b>276.8</b>	<b>281.6</b>	<b>262.8</b>	<b>244.5</b>	<b>241.8</b>	<b>241.9</b>

**Actual Rakes Loading Status (All Sector)**



- Avg. Loading in April'21
- Avg. Loading in May'21
- Avg. Loading in June'21
- Avg. Loading in July'21
- Avg. Loading in Aug'21
- Avg. Loading in Sept'21

It may be seen from above Rakes Loading chart that there are not much fluctuation in BCCL, NCL & MCL.

**COMPANY-WISE MOVEMENT OF RAKES FOR POWER SECTOR PER DAY DURING FY 2021-22(Provisional)**

COMPANY	Avg. Loading in April'21	Avg. Loading in May'21	Avg. Loading in June'21	Avg. Loading in July'21	Avg. Loading in Aug'21	Avg. Loading in Sept'21
ECL	21.10	18.7	16.5	13.7	12.5	15.2
BCCL	17.10	18.1	17.5	17.4	18.5	17.4
CCL	46.20	45.6	39.3	32	30.4	31.6
NCL	26.60	26.6	24.5	25.5	25.5	29.2
WCL	27.90	29.1	25.3	20.8	22.3	21.6
SECL	40.10	44.2	39.3	36	32.9	33.5
MCL	64.40	62.5	59.4	65.2	68.7	72.8
<b>Total</b>	<b>243.4</b>	<b>244.8</b>	<b>221.8</b>	<b>210.6</b>	<b>210.8</b>	<b>221.3</b>

**Actual Rakes Loading Status (Power)**

