

**Monthly Coal Statistics for July'2021(Provisional)**

**Coal Production**

*Fig. in MT*

Sl No	Subs	Monthly Target	Production during July				Coal Production Upto July		
			FY 22	Achmt.(%)	FY 21	Growth (%) M-o-M	FY 22	FY 21	Growth (%) Y-o-Y
1	ECL	3.09	2.16	69.90	2.52	-14.29	10.08	12.58	-19.87
2	BCCL	1.96	2.19	111.73	1.58	38.61	8.01	6.41	24.96
3	CCL	4.74	4.13	87.13	3.13	31.95	17.00	11.67	45.67
4	NCL	8.56	9.01	105.26	8.54	5.50	34.77	35.01	-0.69
5	WCL	2.26	2.73	120.80	2.00	36.50	13.14	12.41	5.88
6	SECL	11.10	9.97	89.82	9.41	5.95	37.66	36.79	2.36
7	MCL	10.43	12.40	118.89	10.17	21.93	45.91	43.48	5.59
	<b>CIL</b>	<b>42.14</b>	<b>42.59</b>	<b>101.07</b>	<b>37.35</b>	<b>14.03</b>	<b>166.57</b>	<b>158.35</b>	<b>5.19</b>
9	SCCL	4.76	4.87	102.33	2.85	70.65	20.44	12.35	65.43
10	Captives		6.90		5.35	28.97	23.19	19.32	20.05
	<b>Grand Total</b>		<b>54.35</b>		<b>45.55</b>	<b>19.33</b>	<b>210.20</b>	<b>190.02</b>	<b>10.62</b>

Front Runner  
 Laggard  
 Mediocre/Aspirer

**Coal Despatch**

*Fig. in MT*

Sl No	Subs	Monthly Target	Coal Despatch During July				Coal Despatch Upto July		
			FY 22	Achmt.(%)	FY 21	Growth (%) M-o-M	FY 22	FY 21	Growth (%) Y-o-Y
1	ECL	4.95	2.61	52.73	3.05	-14.43	13.70	13.20	3.82
2	BCCL	2.88	2.71	94.10	1.89	43.08	10.43	5.69	83.21
3	CCL	7.80	4.83	61.92	4.67	3.54	23.49	15.87	47.99
4	NCL	10.44	10.00	95.79	8.24	21.36	38.44	31.28	22.87
5	WCL	6.78	4.05	59.73	2.97	36.59	20.29	12.33	64.60
6	SECL	17.13	12.57	73.38	10.88	15.59	51.50	40.85	26.06
7	MCL	14.82	13.74	92.71	11.50	19.47	53.07	44.25	19.93
	<b>CIL</b>	<b>64.80</b>	<b>50.51</b>	<b>77.95</b>	<b>43.19</b>	<b>16.95</b>	<b>210.92</b>	<b>163.48</b>	<b>29.02</b>
9	SCCL	4.56	5.03	110.38	2.91	72.94	21.73	11.38	90.96
10	Captives		7.13		5.38	32.52	25.19	20.44	23.26
	<b>Grand Total</b>		<b>62.67</b>		<b>51.48</b>	<b>21.74</b>	<b>257.83</b>	<b>195.29</b>	<b>32.03</b>

Front Runner  
 Laggard  
 Mediocre/Aspirer

**Coal Despatch to Different Sectors**

*Fig. in MT*

Sectors	Coal Despatch During July			Coal Despatch Upto July		
	FY 22	FY 21	Growth (%) M-o-M	FY 22	FY 21	Growth (%) Y-o-Y
Power	49.94	40.36	23.73	208.57	154.26	35.21
CPP	3.35	3.49	-3.84	13.40	14.69	-8.80
Steel	0.54	0.73	-26.50	2.24	3.12	-28.05
Cement	0.57	0.50	12.70	2.35	1.72	36.86
Sponge Iron	0.56	1.02	-44.97	2.19	3.12	-29.81
Others	7.69	5.37	43.36	28.91	18.38	57.23
<b>Total</b>	<b>62.67</b>	<b>51.48</b>	<b>21.72</b>	<b>257.66</b>	<b>195.29</b>	<b>31.94</b>

**Lignite Production**

*Fig. in MT*

Sl No	Company	Production during July			Production Upto July		
		FY 22	FY 21	Growth (%) M-o-M	FY 22	FY 21	Growth (%) Y-o-Y

1	NLCIL	2.268	1.341	69.13	7.209	6.057	19.02
2	GMDCL	0.719	0.299	140.47	2.745	1.469	86.86
3	GIPCL	0.005	0.017	-70.59	0.797	1.360	-41.40
4	RSMML	0.189	0.040	372.50	0.563	0.137	310.95
5	BLMCL	0.585	0.575	1.74	1.829	1.628	12.35
6	GHCL	0.000	0.000		0.040	0.000	
7	VS Lignite	0.058	0.060	-3.33	0.276	0.345	-20.00
	<b>Grand Total</b>	<b>3.824</b>	<b>2.332</b>	<b>63.98</b>	<b>13.459</b>	<b>10.996</b>	<b>22.40</b>

#### Lignite Despatch

Fig. in MT

Sl No	Company	Despatch During July			Despatch Upto July		
		FY 22	FY 21	Growth (%) M-o-M	FY 22	FY 21	Growth (%) Y-o-Y
1	NLCIL	2.531	1.281	97.58	9.741	7.164	35.97
2	GMDCL	0.719	0.299	140.47	2.745	1.469	86.86
3	GIPCL	0.005	0.017	-70.59	0.797	1.360	-41.40
4	RSMML	0.189	0.040	372.50	0.563	0.137	310.95
5	BLMCL	0.584	0.596	-2.01	1.961	1.904	2.99
6	GHCL	0.003	0.002	50.00	0.019	0.007	171.43
7	VS Lignite	0.047	0.051	-7.84	0.254	0.303	-16.17
	<b>Grand Total</b>	<b>4.078</b>	<b>2.286</b>	<b>78.39</b>	<b>16.080</b>	<b>12.344</b>	<b>30.27</b>

#### Coal Consumption in TPP (in MT)

Item	During June			Upto June		
	FY 22	FY 21	Growth (%) M-o-M	FY 22	FY 21	Growth (%) M-o-M
Domestic Coal	50.70	38.50	31.69	160.40	117.10	36.98
Imported Coal Receipt	3.30	2.70	22.22	11.20	10.90	2.75
<b>Total Receipt</b>	<b>54.00</b>	<b>41.20</b>	<b>31.07</b>	<b>171.60</b>	<b>128.00</b>	<b>34.06</b>
<b>Coal Consumption</b>	<b>54.0</b>	<b>45.10</b>	<b>19.73</b>	<b>170.8</b>	<b>128.00</b>	<b>33.44</b>

#### Power Generation in July 2021

Qty. (MU)

Source-wise	Jul-21	% share	Jul-20	Growth(%)
Coal	82127	63.95	75238	9.16
Lignite	2349	1.83	1661	41.42
Hydro	20527	15.98	19662	4.40
Nuclear	3233	2.52	3004	7.62
Gas, Naptha &	2996	2.33	4550	-34.15
RES (Wind, Solar, Biomass)	17190	13.39	12414	38.47
<b>Total</b>	<b>128422</b>	<b>100</b>	<b>116529</b>	<b>10.21</b>

The coal based Power generation in the month of July 2021 has been 82127 MU in comparison to 75747 MU in June 2021 due to increase in Power Demand. Although Share of Coal based power generation has declined by 0.21% in the month of July in comparison to June 2021 . The Share of Hydro have increased marginally by 1.14%.

### Despatch of Coal By CIL

Sectors	Coal Despatch during July			Coal Production Upto July		
	FY 22	FY 21	Growth (%) M-o-M	FY 22	FY 21	Growth (%) Y-o-Y
Power	38.99	33.26	17.23	166.96	126.83	31.64
CPP	3.13	3.33	-6.01	12.29	14.15	-13.11
Steel	0.19	0.13	52.00	0.7	0.65	8.19
Cement	0.29	0.34	-13.43	1.28	1.20	6.31
Sponge Iron	0.55	1.02	-46.13	2.15	3.11	-30.93
Others	7.35	5.12	43.58	27.37	17.54	56.06
<b>Total</b>	<b>50.5</b>	<b>43.19</b>	<b>16.93</b>	<b>210.75</b>	<b>163.48</b>	<b>28.91</b>

### Despatch of Coal By SCCL

Sectors	Coal Despatch during July			Coal Production Upto July		
	FY 22	FY 21	Growth (%) M-o-M	FY 22	FY 21	Growth (%) Y-o-Y
Power	4.22	2.40	75.72	18.08	9.68	86.81
CPP	0.22	0.16	42.04	1.11	0.55	102.74
Steel						
Cement	0.23	0.11	116.67	0.96	0.35	178.61
Sponge Iron	0.01	0.00	550.00	0.04	0.01	320.00
Others	0.34	0.24	42.86	1.53	0.80	92.33
<b>Total</b>	<b>5.03</b>	<b>2.91</b>	<b>73.06</b>	<b>21.73</b>	<b>11.38</b>	<b>90.96</b>

### Coal Despatch to Different Sectors by Captive and Others

Sectors	Coal Despatch during July			Coal Production Upto July		
	FY 22	FY 21	Growth (%) M-o-M	FY 22	FY 21	Growth (%) Y-o-Y
Power	6.73	4.70	43.22	23.53	17.75	32.60
CPP						
Steel	0.35	0.61	-42.67	1.54	2.47	-37.55
Cement	0.04	0.06	-27.87	0.11	0.17	-35.29
Sponge Iron						
Others	0.00	0.01	-87.50	0.01	0.05	-88.24
<b>Total</b>	<b>7.13</b>	<b>5.38</b>	<b>32.52</b>	<b>25.19</b>	<b>20.44</b>	<b>23.26</b>

### Top 35 Mines Production during July 2021(provisional)

Sr. No	Subsidiary	Mines	Type	Annual Target (MT)	Prodn upto June 21 (MT)	Asking Rate for July	Prodn during July 21 (MT)	Achievement
1	ECL	Rajmahal	T35	17.50	1.879	1.77	0.41	23.16%
2	ECL	Sonepur Bazari	T35	11.30	1.725	1.08	0.44	40.73%
3	BCCL	AKWMC	T35	3.49	0.76	0.31	0.29	92.82%
4	CCL	Ashoka	T35	13.00	2.65	1.17	0.91	77.63%
5	CCL	Amarpali	T35	20.00	3.518	1.86	0.96	51.71%
6	CCL	AKK	T35	4.50	0.434	0.46	0.11	23.04%
7	CCL	Magadh	T35	10.00	1.405	0.97	0.65	66.47%
8	CCL	Karo	T35	3.50	1.035	0.28	0.30	105.84%
9	MCL	Bhubaneswari	T35	28.00	7.475	2.322	2.51	108.18%
10	MCL	Lakhanpur	T35	21.00	5.393	1.766	1.86	105.53%
11	MCL	Bharatpur	T35	10.00	1.387	0.974	0.54	55.38%
12	MCL	Lingaraj	T35	14.00	2.425	1.310	1.12	85.53%
13	MCL	Samaleswari	T35	6.00	0.729	0.596	0.26	43.68%
14	MCL	Kulda	T35	16.00	3.865	1.373	1.48	107.76%
15	MCL	Kaniha	T35	9.00	1.483	0.851	0.65	76.32%
16	MCL	Hingula	T35	7.50	1.151	0.718	0.47	65.66%
17	MCL	Ananta	T35	13.00	2.654	1.170	0.83	71.14%
18	MCL	Jagannath	T35	7.00	1.250	0.651	0.54	83.21%
19	MCL	Belpahar	T35	7.00	1.562	0.615	0.35	56.55%
20	MCL	Lajkura	T35	4.50	0.991	0.397	0.28	69.71%
21	MCL	Balram	T35	6.50	0.698	0.656	0.51	77.78%
22	MCL	Garjanbahal	T35	12.00	1.943	1.138	0.89	78.27%
23	NCL	Nigahi	T35	21.00	4.931	1.818	1.71	94.11%
24	NCL	Jayant	T35	22.00	5.028	1.920	1.85	96.45%
25	NCL	Dudhichua	T35	22.00	4.630	1.965	1.39	70.48%
26	NCL	Amlohri	T35	14.00	2.187	1.337	0.95	71.38%
27	NCL	Khadia	T35	14.00	3.060	1.238	1.12	90.73%
28	NCL	Bina	T35	9.50	1.899	0.860	0.62	71.83%
29	NCL	Krishnashila	T35	7.00	1.611	0.610	0.59	96.42%
30	NCL	Block B	T35	5.47	1.450	0.455	0.48	105.32%
31	SECL	Gevra	T35	47.600	8.251	4.45	3.16	70.98%
32	SECL	Dipka	T35	35.000	5.855	3.30	2.13	64.54%
33	SECL	Kushmunda	T35	45.000	5.329	4.49	2.20	49.04%
34	SECL	Manikpur	T35	4.900	1.263	0.41	0.41	98.42%
35	WCL	Penganga	T35	6.300	1.216	0.575	0.37	64.33%
<b>Total</b>				<b>498.56</b>	<b>93.13</b>	<b>45.87</b>	<b>33.33</b>	<b>72.66%</b>

Particulars	No. of Mines
Mines performed more than 100%	5
Mines performed more than 80% , but less than 100%	8
Mines performed less than 80%	22



### Top 35 Mines-wise OBR during July 2021(provisional)

S.No	Subsidia	Mines	Type	Annual Target (M.Cum)	OBR upto June 21 (M.Cum)	Asking Rate for July 2021	Prodn during July 21 (M.Cum)	Achievement
1	ECL	Rajmahal	T35	33.200	3.471	3.364	1.165	34.65%
2	ECL	Sonepur Bazari	T35	71.400	15.142	6.365	4.602	72.31%
3	BCCL	AKWMC	T35	9.94	2.07	0.89	1.00	112.73%
4	CCL	Ashoka	T35	20.000	5.342	1.658	0.945	56.95%
5	CCL	Amarpali	T35	25.000	4.027	2.373	1.061	44.69%
6	CCL	AKK	T35	7.000	1.673	0.603	0.543	90.04%
7	CCL	Magadh	T35	15.000	3.453	1.306	0.931	71.26%
8	CCL	Karo	T35	3.500	0.278	0.365	0.099	27.10%
9	MCL	Bhubaneswari	T35	18.000	3.821	1.604	1.072	66.82%
10	MCL	Lakhanpur	T35	40.000	7.415	3.687	2.605	70.67%
11	MCL	Bharatpur	T35	12.000	2.774	1.044	0.887	85.01%
12	MCL	Lingaraj	T35	14.000	2.107	1.346	0.768	57.06%
13	MCL	Samaleswari	T35	9.500	2.124	0.835	0.779	93.36%
14	MCL	Kulda	T35	18.000	3.659	1.623	1.458	89.84%
15	MCL	Kaniha	T35	6.000	1.827	0.472	0.445	94.23%
16	MCL	Hingula	T35	12.000	4.336	0.867	1.350	155.66%
17	MCL	Ananta	T35	20.000	5.639	1.625	1.657	101.98%
18	MCL	Jagannath	T35	7.000	1.113	0.666	0.418	62.79%
19	MCL	Belpahar	T35	8.000	0.631	0.834	0.118	14.11%
20	MCL	Lajkura	T35	10.000	2.363	0.864	0.803	92.94%
21	MCL	Balram	T35	16.000	3.372	1.429	1.176	82.32%
22	MCL	Garjanbahal	T35	9.000	1.767	0.818	0.804	98.19%
23	NCL	Nigahi	T35	78.000	16.212	6.991	4.207	60.18%
24	NCL	Jayant	T35	48.500	11.979	4.132	3.808	92.15%
25	NCL	Dudhichua	T35	68.500	12.065	6.385	3.856	60.39%
26	NCL	Amlohri	T35	56.500	12.000	5.035	4.609	91.54%
27	NCL	Khadia	T35	50.500	11.241	4.442	4.212	94.83%
28	NCL	Bina	T35	38.900	8.822	3.403	3.806	111.84%
29	NCL	Krishnashila	T35	17.500	3.357	1.600	0.991	61.95%
30	NCL	Block B	T35	17.000	4.142	1.455	1.569	107.87%
31	SECL	Gevra	T35	65.000	12.490	5.941	3.141	52.87%
32	SECL	Dipka	T35	36.000	5.064	3.500	1.530	43.71%
33	SECL	Kushmunda	T35	50.000	9.170	4.619	2.296	49.70%
34	SECL	Manikpur	T35	13.000	3.142	1.115	0.796	71.37%
35	WCL	Penganga	T35	21.500	4.727	1.898	1.196	63.02%
<b>Total</b>				<b>945.44</b>	<b>192.82</b>	<b>85.15</b>	<b>60.70</b>	<b>71.29%</b>

Particulars	No. of Mines
Mines performed more than 100%	5
Mines performed more than 80% , but less than 100%	11
Mines performed less than 80%	19

## Coal Production in mines of all Subsidiaries of CIL (provisional data)

Fig. in MT

Srl No	Subs	Types of Mines	No of Mines	Annual Target (MT)	During July			Upto July		
					FY 22	FY 21	Growth %) M-O-M	FY 22	FY 21	Growth %) Y-O-Y
1	ECL	Top 35	2	28.80	0.85	1.37	-37.96	4.45	6.82	-34.74
		Others	2	3.80	0.42	0.23	82.61	1.38	1.48	-7.08
		Top 75	4	32.60	1.27	1.60	-20.63	5.83	8.31	-29.80
		Rest	74	19.40	0.89	0.92	-3.26	4.25	4.27	-0.58
	<b>Overall ECL</b>			<b>78</b>	<b>52.00</b>	<b>2.16</b>	<b>2.52</b>	<b>-14.29</b>	<b>10.08</b>	<b>12.58</b>
2	BCCL	Top 35	1	3.49	0.29	0.27	7.41	1.05	0.90	17.06
		Others	8	13.31	1.01	0.69	46.38	3.74	3.13	19.37
		Top 75	9	16.80	1.30	0.96	35.42	4.79	4.03	18.86
		Rest	22	16.69	1.18	0.89	32.58	4.27	3.28	30.30
	<b>Overall BCCL</b>			<b>30</b>	<b>30.00</b>	<b>2.19</b>	<b>1.58</b>	<b>38.61</b>	<b>8.01</b>	<b>6.41</b>
3	CCL	Top 35	5	51.00	2.92	2.01	44.99	11.96	6.61	81.05
		Others	5	9.40	0.51	0.36	40.11	2.14	2.07	3.18
		Top 75	10	60.40	3.43	2.38	44.24	14.10	8.68	62.44
		Rest	32	13.60	0.70	0.75	-6.91	2.90	2.99	-3.01
	<b>Overall CCL</b>			<b>42</b>	<b>74.00</b>	<b>4.13</b>	<b>3.13</b>	<b>31.95</b>	<b>17.00</b>	<b>11.67</b>
4	MCL	Top 35	14	161.50	12.30	10.07	22.14	45.30	43.04	5.25
		Others	1	1.00	0.06	0.01	500.00	0.28	0.21	32.70
		Top 75	15	162.50	12.36	10.08	22.62	45.58	43.25	5.39
		Rest	4	0.50	0.04	0.09		0.33	0.23	
	<b>Overall MCL</b>			<b>19</b>	<b>163.00</b>	<b>12.40</b>	<b>10.17</b>	<b>21.93</b>	<b>45.91</b>	<b>43.48</b>
5	NCL	Top 35	8	114.97	8.71	8.16	6.74	33.50	33.62	-0.35
		Others	2	4.03	0.29	0.36	-19.72	1.26	1.38	-8.57
		Top 75	10	119.00	9.00	8.52	5.62	34.76	35.00	-0.67
		Rest	0	0.00	0.01	0.00		0.01	0.00	
	<b>Overall NCL</b>			<b>10</b>	<b>119.00</b>	<b>9.01</b>	<b>8.54</b>	<b>5.50</b>	<b>34.77</b>	<b>35.01</b>
6	SECL	Top 35	4	132.50	7.89	7.11	10.97	28.58	28.09	1.74
		Others	10	19.29	1.15	1.14	0.88	4.81	4.33	11.06
		Top 75	14	151.79	9.04	8.25	9.58	33.39	32.42	2.99
		Rest	56	20.21	0.93	1.16	-19.83	4.27	4.37	-2.27
	<b>Overall SECL</b>			<b>70</b>	<b>172.00</b>	<b>9.97</b>	<b>9.41</b>	<b>5.95</b>	<b>37.66</b>	<b>36.79</b>
7	WCL	Top 35	1	6.30	0.37	0.18	105.56	1.59	0.75	110.88
		Others	11	29.08	1.38	0.88	56.82	6.89	6.54	5.34
		Top 75	12	35.38	1.75	1.06	65.09	8.48	7.30	16.24
		Rest	48	24.62	0.98	0.94	4.26	4.66	5.12	-8.90
	<b>Overall WCL</b>			<b>60</b>	<b>60.00</b>	<b>2.73</b>	<b>2.00</b>	<b>36.50</b>	<b>13.14</b>	<b>12.41</b>
8	CIL	Top 35	35	498.56	33.33	29.17	14.25	126.43	119.83	5.51
		Others	39	79.91	4.82	3.67	31.16	20.50	19.15	7.03
		Top 75	74	578.47	38.15	32.85	16.14	146.93	138.98	5.72
		Rest of mines	235	91.53	4.44	4.50	-1.35	19.64	19.37	1.38
	<b>Overall CIL</b>			<b>309</b>	<b>670.00</b>	<b>42.59</b>	<b>37.35</b>	<b>14.03</b>	<b>166.57</b>	<b>158.35</b>

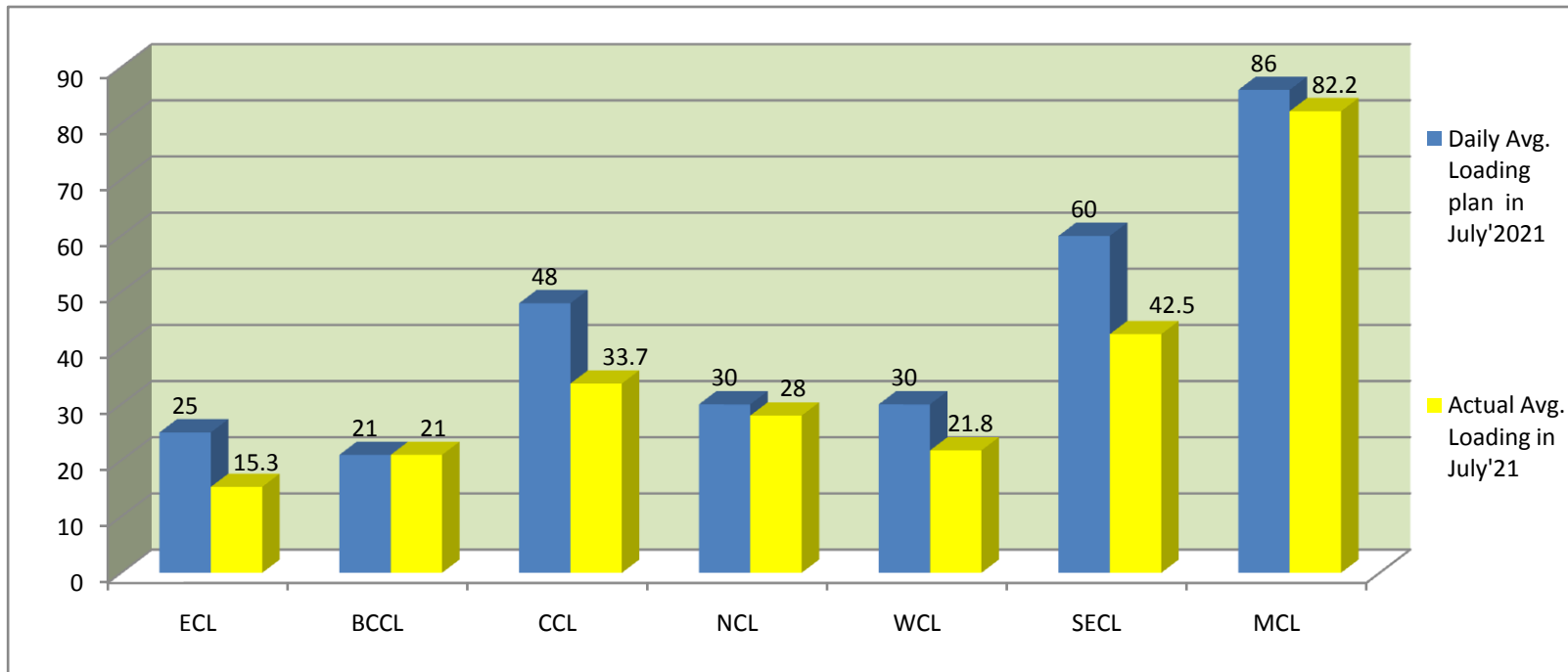
Top 75 = Top 35 + others mines including in top 75 mines

Rest of Mines = other than top 75

overall Mines = Top 75 + rest of mines

**COMPANY-WISE MOVEMENT OF RAKES FOR OVERALL SECTOR PER DAY IN JULY'21(Provisional)**

COMPAN	Daily Avg. Loading plan in	Actual Avg. Loading in	Achievemnt (%)	Actual Avg. Loading	Monthly Growth%	Actual Avg. Loading in April'21	Actual Avg. Loading in May'21	Actual Avg. Loading in June'21
ECL	25	15.3	61	17.7	-14	25.1	22.5	19
BCCL	21	21	100	12.6	67	19.8	20.9	20
CCL	48	33.7	70	33.1	2	47.9	48.4	43
NCL	30	28	93	25.2	11	28.4	27.8	27
WCL	30	21.8	73	16.6	31	28.8	30	27
SECL	60	42.5	71	40.5	5	46.5	51.2	47
MCL	86	82.2	96	65.9	25	80.3	80.8	80
Total	300	244.5	82	211.6	16	276.8	281.6	262.8

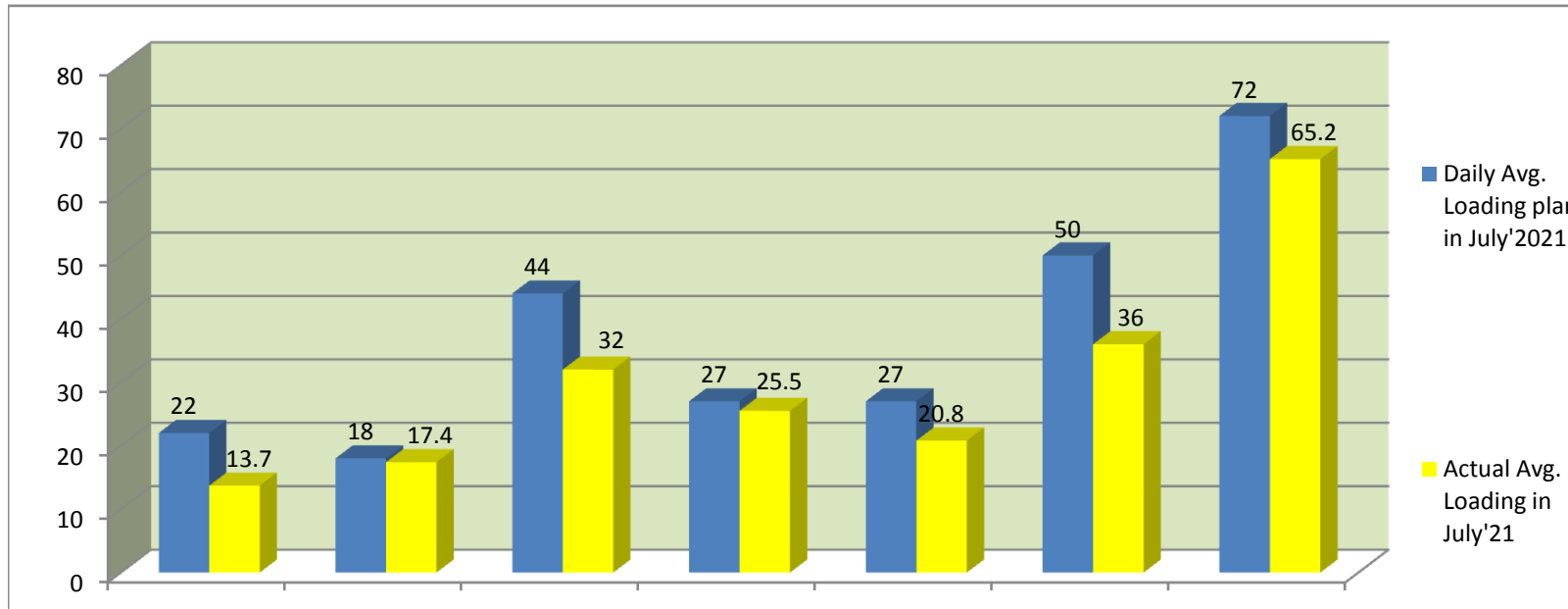




It is important to note here that loading has decreased in the month of July 21 as compared to earlier months due to start of rainy season. Overall loading achievement of MCL and NCL is 95.58% and 93.33% respectively.

**COMPANY-WISE MOVEMENT OF RAKES FOR POWER SECTOR PER DAY IN JULY'21(Provisional)**

COMPAN	Daily Avg. Loading plan in July'2021	Actual Avg. Loading in July'21	Achievemnt (%)	Actual Avg. Loading July'20	Monthly Growth%	Actual Avg. Loading in April'21	Actual Avg. Loading in May'21	Actual Avg. Loading in June'21
ECL	22	13.7	62	16.2	-15	21.10	18.7	16.5
BCCL	18	17.4	97	10.7	63	17.10	18.1	17.5
CCL	44	32	73	31.7	1	46.20	45.6	39.3
NCL	27	25.5	94	22.5	13	26.60	26.6	24.5
WCL	27	20.8	77	15.7	32	27.90	29.1	25.3
SECL	50	36	72	31.1	16	40.10	44.2	39.3
MCL	72	65.2	91	45.3	44	64.40	62.5	59.4
Total	260	210.6	81	173.2	22	243.40	244.8	221.8



ECL

BCCL

CCL

NCL

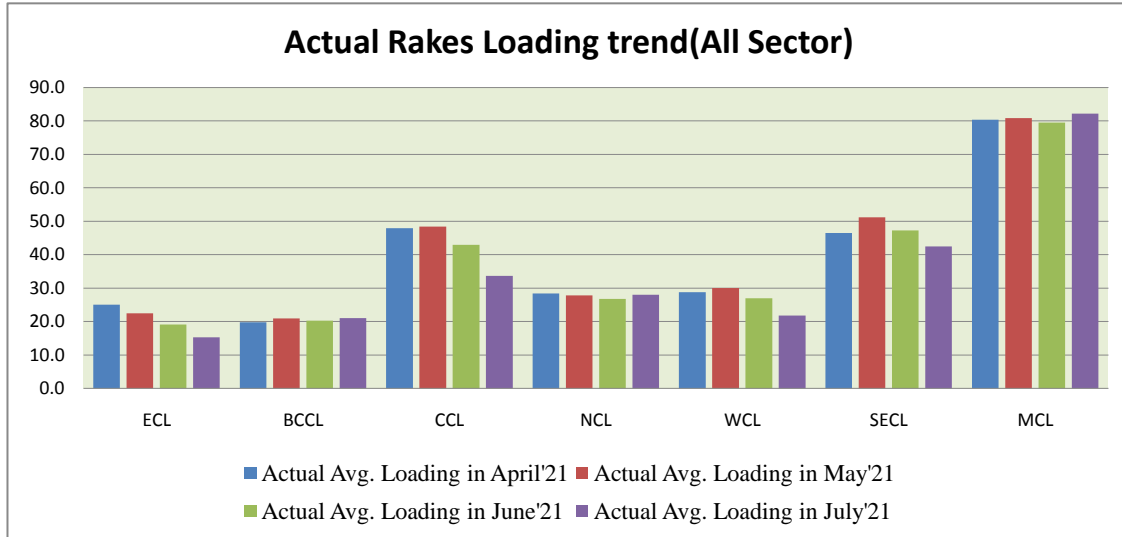
WCL

SECL

MCL

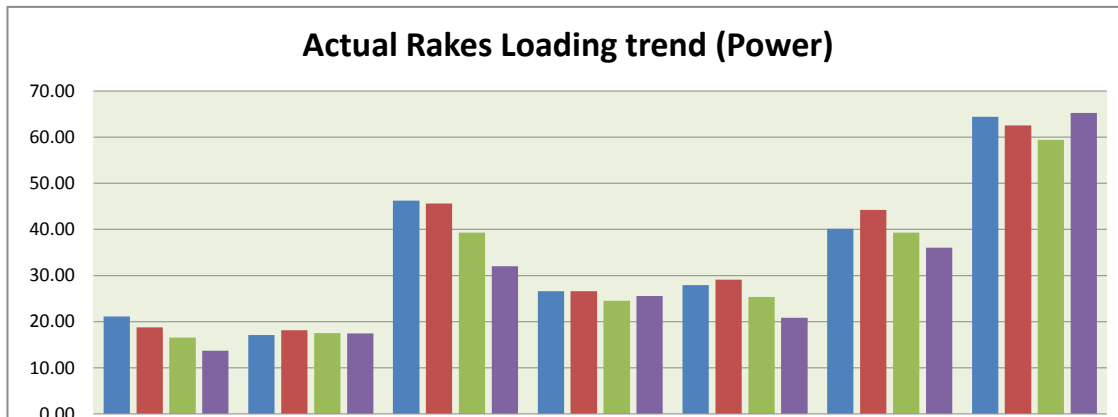
**COMPANY-WISE MOVEMENT OF RAKES FOR ALL SECTOR PER DAY IN JULY'21(Provisional)**

COMPAN	Actual Avg. Loading in April'21	Actual Avg. Loading in May'21	Actual Avg. Loading in June'21	Actual Avg. Loading in July'21
ECL	25.1	22.5	19	15.3
BCCL	19.8	20.9	20	21
CCL	47.9	48.4	43	33.7
NCL	28.4	27.8	27	28
WCL	28.8	30	27	21.8
SECL	46.5	51.2	47	42.5
MCL	80.3	80.8	80	82.2
Total	<b>276.8</b>	<b>281.6</b>	<b>262.8</b>	<b>244.5</b>



**COMPANY-WISE MOVEMENT OF RAKES FOR POWER SECTOR PER DAY IN JULY'21(Provisional)**

COMPAN	Actual Avg. Loading in April'21	Actual Avg. Loading in May'21	Actual Avg. Loading in June'21	Actual Avg. Loading in July'21
ECL	21.10	18.7	16.5	13.7
BCCL	17.10	18.1	17.5	17.4
CCL	46.20	45.6	39.3	32
NCL	26.60	26.6	24.5	25.5
WCL	27.90	29.1	25.3	20.8
SECL	40.10	44.2	39.3	36
MCL	64.40	62.5	59.4	65.2
Total	<b>243.4</b>	<b>244.8</b>	<b>221.8</b>	<b>210.6</b>



0.00

ECL

BCCL

CCL

NCL

WCL

SECL

MCL

- Actual Avg. Loading in April'21
- Actual Avg. Loading in May'21
- Actual Avg. Loading in June'21
- Actual Avg. Loading in July'21